



Connect Priority: Improve health, care and wellbeing

Note: some 2020-21 results were impacted due to the Covid-19 crisis

Housing suitable for older people

Total number of amenity houses in our stock

Target – upgrade all available
suitable properties

2019-20

776



2020-21

820



Target met ✓ Performance improving ✓

Care Inspectorate

inspections of (SLC only) registered care
services evaluated as 'good/very good'

2019-20

78%

2020-21

95%



Carers accessing support

Target – increase by 10%

2019-20

4,121

2020-21

4,917

Target met ✓ Performance improving ✓

Local authority and private Welfare guardianship visits:

Target – 90%

% Completed on time

2019-20

2020-21

86%

94%

Target met ✓ Performance improving ✓

No target set for 2020-21 Performance improving ✓

www.southlanarkshire.gov.uk/connect

If you need this information in another language or format, please contact us to discuss how we can best meet your needs.

Phone: 0303 123 1015 Email: equalities@southlanarkshire.gov.uk

Produced for Finance and Corporate Resources by Communications and Strategy.061198/Jun21



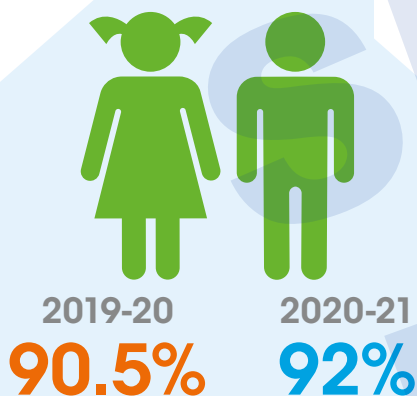
Connect Priority:

Getting it right for children and young people

Note: some 2020-21 results were impacted due to the Covid-19 crisis

Children being looked after in a community setting

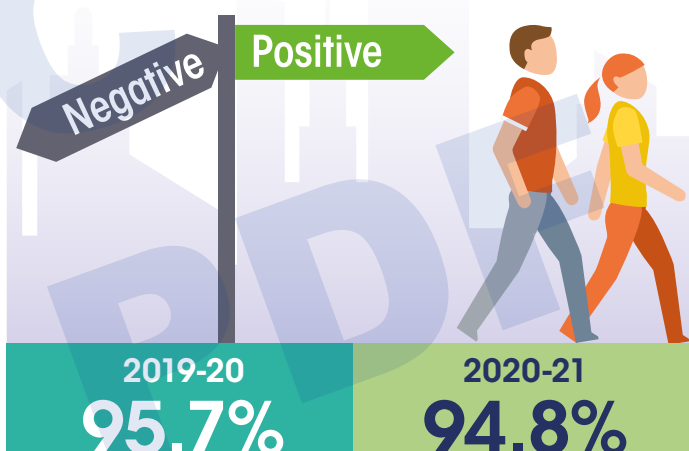
Target – more than 90%



Target met ✓ Performance improving ✓

Pupils entering positive destinations

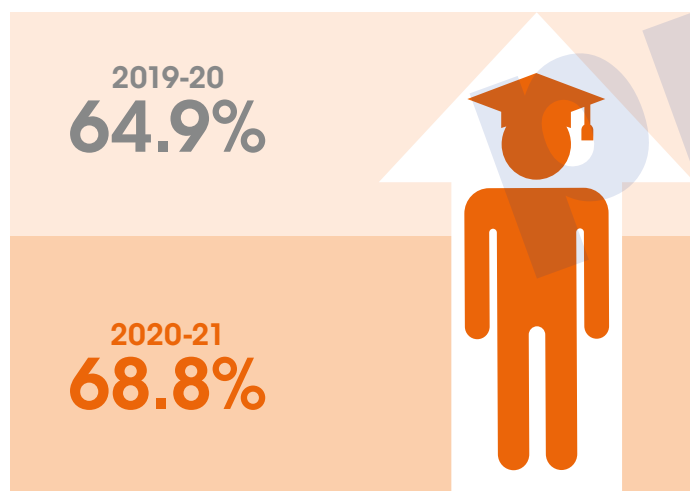
Target – 95%



Target met ✗ Performance improving ✗

School leavers' achieving 5 or more awards at Level 5

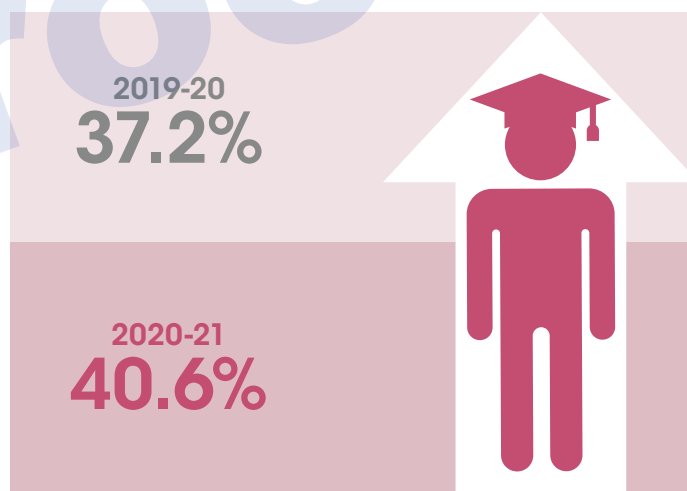
Target – improve on previous year



Target met ✓ Performance improving ✓

School leavers' achieving 5 or more awards at Level 6

Target – improve on previous year



Target met ✓ Performance improving ✓

www.southlanarkshire.gov.uk/connect

If you need this information in another language or format, please contact us to discuss how we can best meet your needs.

Phone: 0303 123 1015 Email: equalities@southlanarkshire.gov.uk

Produced for Finance and Corporate Resources by Communications and Strategy.061198/Jun21



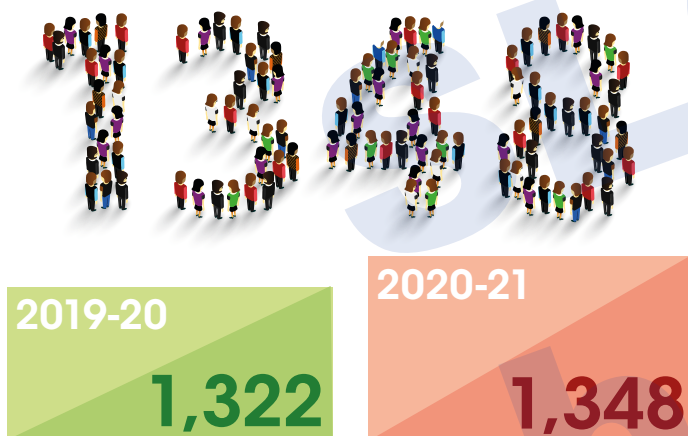
Connect Priority:

Promote sustainable and inclusive economic growth and tackle disadvantage

Note: some 2020-21 results were impacted due to the Covid-19 crisis

Unemployed people supported via council operated employability programmes

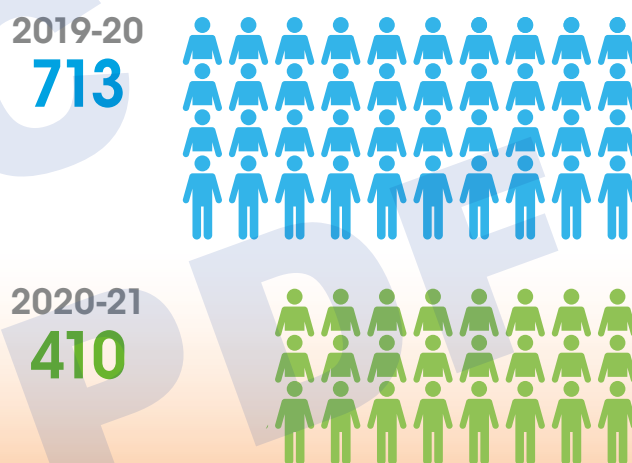
Target – 1,000



Target met ✓ Performance improving ✓

Unemployed people gaining sustainable employment

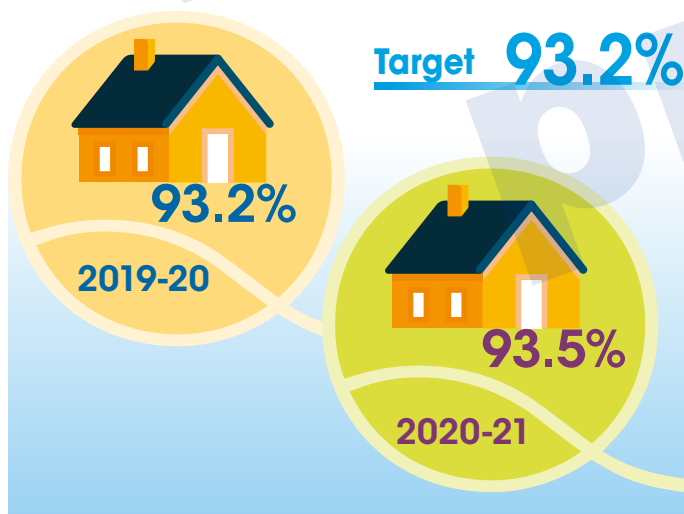
Target – 400



Target met ✓ Performance improving ✗

Scottish Housing Quality Standard

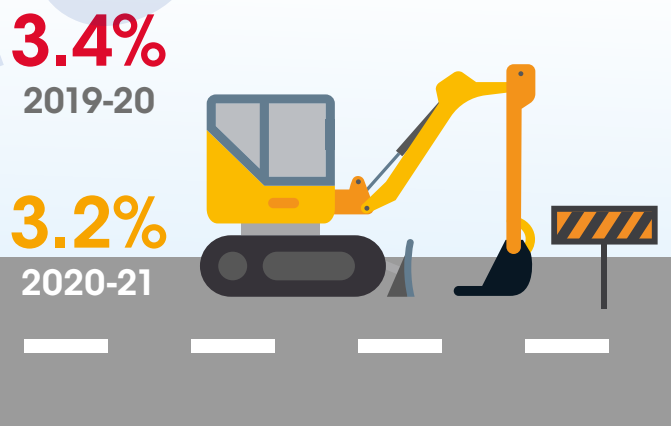
% of council housing stock meeting the Scottish Housing Quality Standard



Target met ✓ Performance improving ✓

Percentage of the road network resurfaced

Target – reduced to 2% in 2020-21 due to Covid-19



Target met ✓ Performance improving ✗

www.southlanarkshire.gov.uk/connect

If you need this information in another language or format, please contact us to discuss how we can best meet your needs.

Phone: 0303 123 1015 Email: equalities@southlanarkshire.gov.uk

Produced for Finance and Corporate Resources by Communications and Strategy.061198/Jun21



Connect Priority:

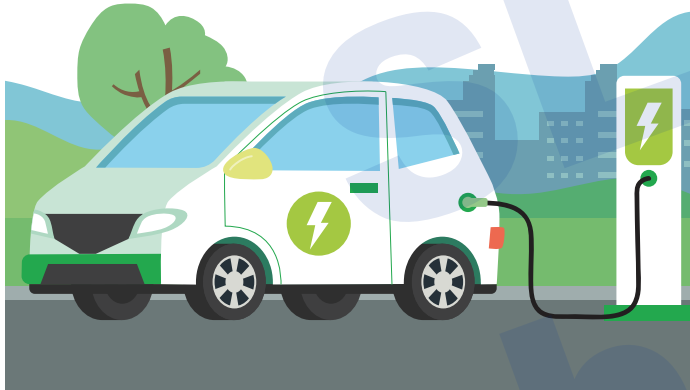
Ensure communities are safe, strong and sustainable

Note: some 2020-21 results were impacted as a result of the Covid-19 crisis

Reduce vehicle emissions

Target – 10%

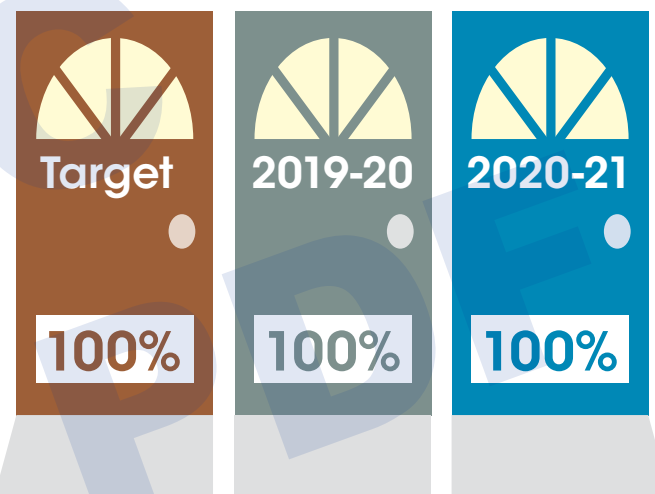
2019-20 **12.9%** 2020-21 **28.0%**



Target met ✓ Performance improving ✓

Doorstep crime

Reports responded to on the same or next working day



Target met ✓ Performance maintained ↔

Additional affordable homes delivered

Target – provide 1,000 homes by end of 2021

2019-20

95



2020-21

197



Target met: on track Performance improving ✓

Housing repairs completed first time



Target met ✓ Performance improving ✓

www.southlanarkshire.gov.uk/connect

If you need this information in another language or format, please contact us to discuss how we can best meet your needs.

Phone: **0303 123 1015** Email: equalities@southlanarkshire.gov.uk

Produced for Finance and Corporate Resources by Communications and Strategy.061198/Jun21



Covid response

Wellbeing and assistance

53,861

calls to/from the
wellbeing line in 2020-21



5,354

community
responses
to the wellbeing
helpline



4,720

food packs
supplied directly
to vulnerable
groups such
as homeless,
sheltered housing



407,540

meals distributed
directly to individuals
and families or to
food organisations
in communities





Covid response

Businesses helped and grants issued

1,365 grants of £1,500

to taxi/private hire drivers under the 2020-21 scheme, totalling £2.047 million



1,536

Strategic Framework Fund (SFF) Business Grants paid totalling £12.332 million



1,410

Strategic Framework Fund (SFF) hospitality, retail and leisure sector top up grants paid, totalling £9.392 million

RESTAURANT



3,896

Small Business and Retail, Hospitality and Leisure (RHL) Grants paid totalling £43.745 million

997

Self-Isolation Support Grants (SISG) paid amounting to £498,500



www.southlanarkshire.gov.uk/connect

If you need this information in another language or format, please contact us to discuss how we can best meet your needs.

Phone: **0303 123 1015** Email: equalities@southlanarkshire.gov.uk

Produced for Finance and Corporate Resources by Communications and Strategy.061198/Jun21



Covid response

Businesses helped and grants issued



Discretionary funding to 469
micro and small businesses of

£1.3million

Break restrictions, Closure and
Restrictions grants, worth

£1.39million

in October 2020



'Contingency' Plus
funds of

£145,000

to eligible
travel agencies
and a craft brewery

New Self Employed
Hardship Fund

£605,000



COVID 19 Soft Play and
Nightclub Support of

£325,000



www.southlanarkshire.gov.uk/connect

If you need this information in another language or format, please contact us to discuss how we can best meet your needs.

Phone: **0303 123 1015** Email: equalities@southlanarkshire.gov.uk

Produced for Finance and Corporate Resources by Communications and Strategy.061198/Jun21



Covid response

Support for Education

Over

5,800 Chromebook devices

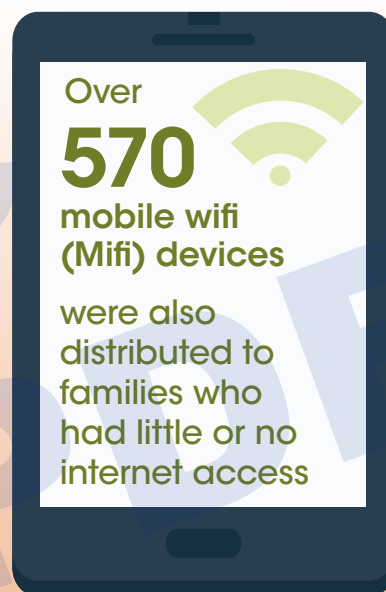
were purchased by the council and distributed to pupils to support their learning and keep them connected during lockdown



Over

570 mobile wifi (Mifi) devices

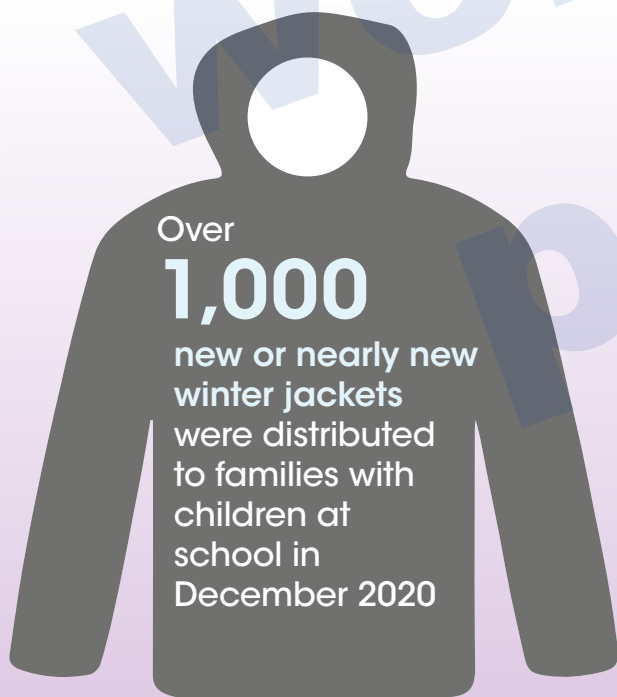
were also distributed to families who had little or no internet access



Over

1,000

new or nearly new winter jackets were distributed to families with children at school in December 2020



Over

500 children each day

attended the emergency childcare hubs to support vulnerable children and those of key workers over the school summer holidays



Over

200 Parent Council representatives

joined the locally based forums for a Q and A with the Executive Director of Education during lockdown



www.southlanarkshire.gov.uk/connect

If you need this information in another language or format, please contact us to discuss how we can best meet your needs.

Phone: **0303 123 1015** Email: equalities@southlanarkshire.gov.uk

Produced for Finance and Corporate Resources by Communications and Strategy.061198/Jun21