

Community Benefit Annual Report 2020- 2021



South Lanarkshire
Renewable Energy Fund

Managed by



Contents

Introduction

Achieved in 2020/2021

Key facts

Renewable Energy Fund (REF) projects

REF main fund

REV Covid-19 fund

REF previously funded and recently completed projects

Grant funds map

Micro grants

Clyde Wind Farm Fund (CWFF) projects

CWFF previously funded and recently completed projects

Connect2Renewables (C2R)

How to apply

Introduction



Welcome to our 2020/2021 Community Benefit Funds Annual Report. I am delighted to outline the work these funds, administered by South Lanarkshire Council have provided to communities all across South Lanarkshire, over the last year.

The Community Benefit Funds consist of the 'Renewable Energy Fund' and the 'Clyde Wind Farm Fund' and together they provide grant support to the communities closest to the windfarms, the funds cover all of our rural communities and many of our urban towns. During 2020 -21 the funds have made 163 grant awards and awarded a total of £2,380,954 in funding. These funds have supported a tremendous scale and range of projects across South Lanarkshire from Community Councils receiving £5,000 to deliver micro grant funding of £500 to local community groups, to the largest combined grant in 2020/2021 of £859,804 to Abington Campus for Enterprise, supported through the Renewable Energy Fund and the Clyde Wind Farm Fund. In a year which has been challenging for many in our communities due to the pandemic we have seen communities come together to help each other. The funds have been flexible with the launch of the innovative 'Covid-19 Support Fund' providing grants to help sustain community groups financially with ongoing revenue costs and also grants to help groups deliver activities to support their communities through the pandemic. The funds have helped improve facilities for communities, supported community ownership and supported local employment and training especially through the 'Connect2Renewables' programme. The Community Benefit Funds have been administered by South Lanarkshire Council for over 15 years awarding over 550 grants in the last six years alone and this report can only capture a small snap shot of this year's grant awards and projects recently completed.



**Councillor John Anderson
Chair of Community and Enterprise Resources**

The South Lanarkshire Community Benefit Funds include the Clyde Wind Farm Fund (CWFF), the Renewable Energy Fund (REF), the Quarry Fund and supports the Connect2Renewables (C2R) employability and RISE employability programmes.

The funds have operated in South Lanarkshire for nearly twenty years and have provided millions of pounds of grants and helped communities bring in millions more of additional match funds to improve green spaces, buildings and facilities across the authority. This is the first annual report which showcases through pictures some of the amazing work undertaken by people and communities using these funds. There are 42 windfarm funds within South Lanarkshire under the administration of South Lanarkshire Council providing approximately £2m each year for communities and organisations based within 10km of the windfarm. The fund seeks to improve the lives of people and communities by supporting capital projects under four themes:

- Stronger communities
- Prosperous communities
- Healthy and active communities
- Sustainable environmental communities

This report is a small snap shot of the projects delivered recently by groups and organisations across South Lanarkshire using these grants. In the coming year the funds will support many more communities and projects and welcome applications that will make the area better for all who live here.

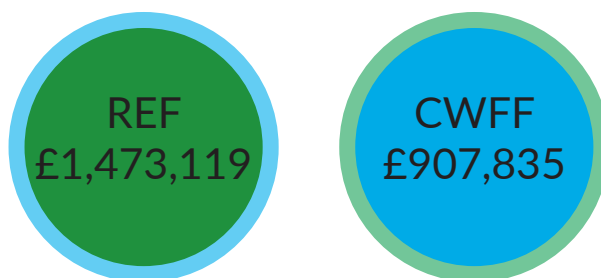
Achieved in 2020/2021



163 grants awarded



£2,380,454



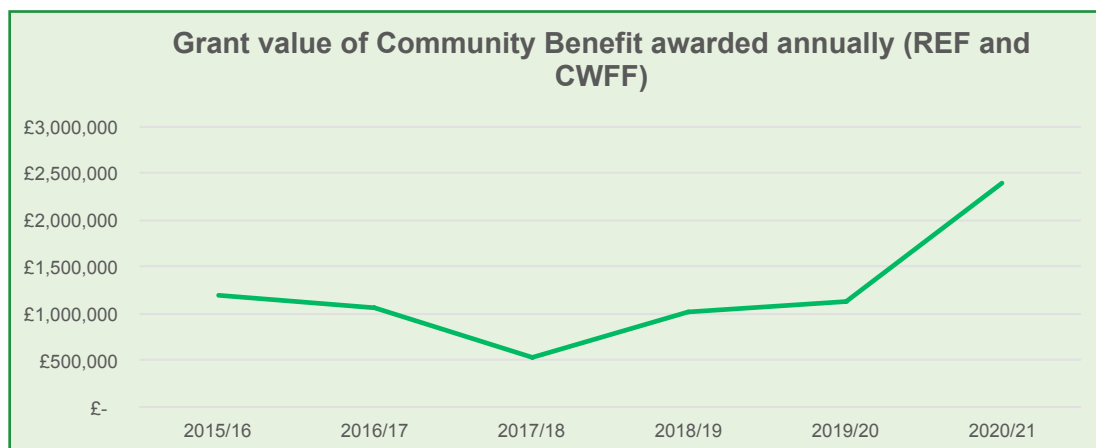
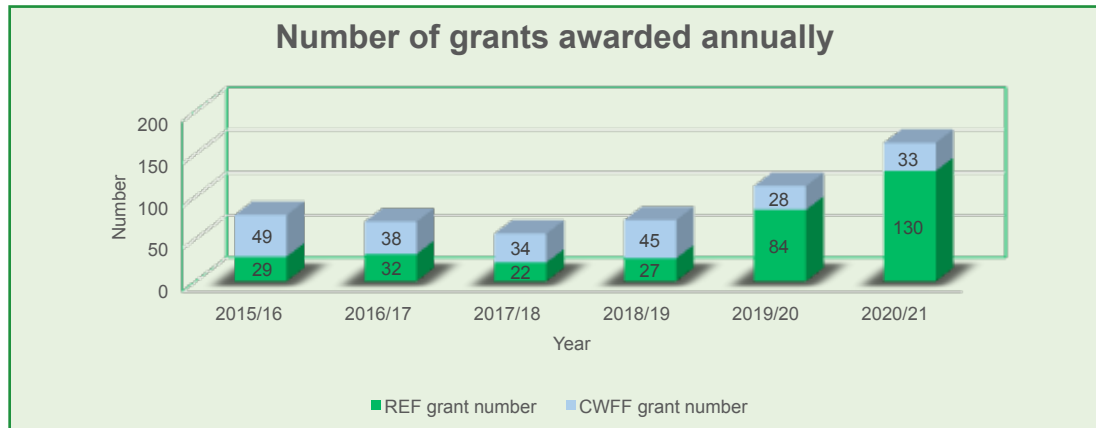
Key facts



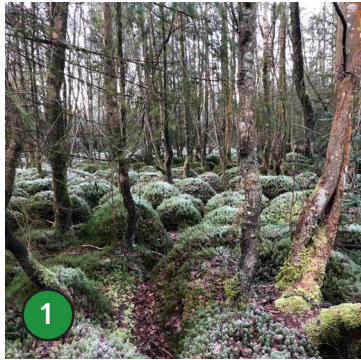
* CAO - Community Asset Ownerships

Annual totals

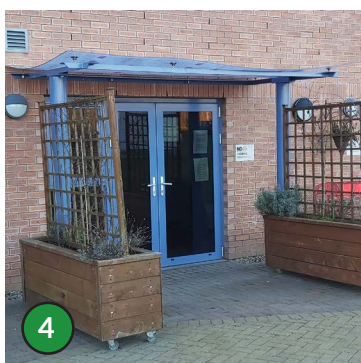
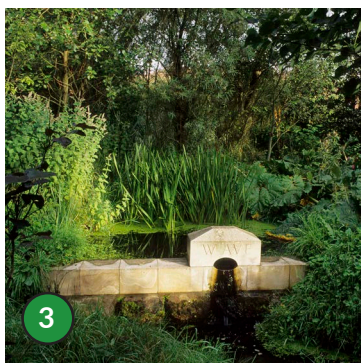
The number and value of grants awarded have increased since 2017/2018 by over 200%.



Renewable Energy Fund (REF)



REF main fund



1 Blackwood Woodlands

Blackwood Estate Community Association have been awarded Renewable Energy Funding of £117,200 towards an overall project cost £234,400 for the purchase of a community woodland and renovation of the space. Victoria Connick, Treasurer, Blackwood Estate Community Association said: "In the past year, REF has provided essential financial support to our group, allowing us to finalise plans for the purchase of 65 acres of ancient woodland in Blackwood Estate, South Lanarkshire. REF funding enabled us to carry out a formal feasibility study and environmental surveys: these were critical to our success in achieving grant awards totalling £234,400 (allowing our project to progress towards completion in March 2021). The REF team have at all times been approachable, professional and supportive, we couldn't have got there without them." Funded from Dungavel and Kypemuir Wind Farm.

2 Carnwath Community Council

Carnwath Community Council have been awarded Renewable Energy Funding of £259,868 towards an overall project cost £687,868 to purchase two derelict sites and transform these into a community hub and garden. Carnwath Community Council's Angus Knox said: "This project is truly transformational for our community, we have had two derelict sites on the main entrance to Carnwath from Edinburgh for over 20 years, they are now going to be transformed because of the match funding we have received from REF, our Community is so excited that this is the beginning of Carnwath realising its full potential to prosper, create jobs and opportunities for everyone. This has been a partnership effort by the whole community coming together and working for the community benefit to Carnwath." Funded from Muirhall, Muirhall Stallanshaw and by Scottish Power Renewables Blacklaw.

3 The Little Sparta Trust

The Little Sparta Trust have been awarded £41,469 towards a total project cost of £83,469 this will develop the infrastructure and resources necessary to make Little Sparta a leading cultural heritage site in Scotland. Ian Hamilton Finlay is one of Scotland and the UK's most influential visual artists. Little Sparta, his master work, has been voted the most important contemporary artwork in Scotland in a poll of gallery owners and critics. And it is widely acknowledged as one of the most distinctive gardens in Europe. However, while Finlay's works are displayed in world famous institutions like the Tate and the Getty Foundation, Little Sparta remains relatively unknown to the wider public. This project will change that by introducing new audiences to Little Sparta. By 2025, the centenary of Ian Hamilton Finlay's birth, the Little Sparta trust is hoping to host up to 5,000 visitors. Funded from Muirhall and Muirhall Stallashaw.

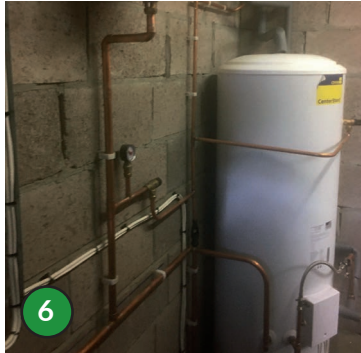
4 Kilbryde Hospice

Kilbryde Hospice were awarded £19,947 from the Renewable Energy Fund to provide outdoor shelter for visitors. Kilbryde Hospice CEO Gordon McHugh said: "The canopies, part funded through REF, have enabled Kilbryde Hospice to manage the Covid-19 guidance of restricted visiting by supporting families from our communities to visit their loved ones safely outside the patient's room. Several patients have already benefitted by sitting outside in the fresh air and enjoying the surroundings of the hospice. The canopies will see us through the term of the pandemic and be a legacy for the hospice and the communities we serve for many years to come." Funded from Scottish Power Renewables Whitelee Wind Farm.



5 Friends of Stonehouse Park

Friends of Stonehouse Park received a Renewable Energy Fund award of £1,151. Friends of Stonehouse Park Karen Kelly commented: "Friends of Stonehouse Park really appreciated the grant from the REF. We used some of the money to purchase bulbs, which were planted in the park in December 2020. We are looking forward to the snow disappearing to reveal a plethora of spring colour. It was great for the committee to be able to get together at a socially distance, to plant them and we hope it brings lots of joy to people walking through the park. Hopefully once Covid-19 has passed we will utilise the rest of the fund for our outdoor cinema." Funded from Auchrobert Wind Farm.



6 Law Bowling Club

Law Bowling Club were awarded £4,598 from the Renewable Energy Fund towards the installation cost of a new energy efficient heating system. Jim Leghorn from Law Bowling Club said: "I would like to pass on our thanks for the support REF gave us to help upgrade a very old system. It would have taken a few more years for us to raise the capital needed to complete these works." REF Covid-19 fund. Funded from Scottish Power Renewables Blacklaw Wind Farm.



7 Clydesdale Housing Association Community Hub

REF provided £6,503 funding support to an overall project cost of £8,561 to the Clydesdale Housing Association Community Hub. CHA's Chief Executive, Joe Gorman said: "REF support for the CHA Community Hub IT equipment has been crucial to resourcing the facility the way we needed to. Funding this high quality kit supports digital inclusion in our community and the access to opportunities this brings. The REF team couldn't have been more helpful with the application and claims process – many thanks." Funded from Scottish Power Renewables Blacklaw Wind Farm.

REF Covid-19 fund



8 Forth Community Resource Centre

Forth Community Resource Centre were awarded a Renewable Energy Fund grant of £4,930 to support digital inclusion throughout the Clydesdale area. Forth Community Resource Centre's Anne Caruthers said, "The REF grant allowed us to employ an IT/administration support assistant for six months to help in the delivery of our 'Connecting Clydesdale Project'. As part of the 'Connecting Scotland Programme' from the Scottish Government, we set-up and distributed iPads, chromebooks and mobile broadband to 54 vulnerable people in Clydesdale and delivered a bespoke IT training programme to a total of 69 people, building their confidence and skills with IT to access essential services and stay connected with family and friends during Covid-19." Funded from Muirhall Wind Farm.



9 East Kilbride Cricket Club

East Kilbride Cricket Club received a grant of £5,758 which will help the clubs future through Covid-19 restrictions. East Kilbride Cricket Club's Brian Kampman commented: "With support from REF, the nets at our club have had a complete make over in the spring of 2020, this will allow us to play cricket all winter and summer long. We also received a grant to cover the ongoing costs through the Covid-19 crisis which has helped to ensure we will continue and have one of the best facilities in the West of Scotland." Funded from Clyde Development Fund Wind Farm.

10 Coalburn Silver Band

Coalburn Silver Band were awarded £4,471 to help continue practice and online interaction. Coalburn Silver Band's Daniel Beadle said: "The funding received from the REF, has helped to ensure that the Coalburn Brass Band Family has been able to continue to operate during the pandemic. The Coalburn Bronze, Intermediate and Silver Bands and the Coalburn Percussion Academy have continued to meet on a weekly basis on Zoom with rehearsals led by our musical directors and tutors. The money from the REF allowed us to purchase new music as all income from engagements has stopped since it has not been possible for our ensembles to perform live." Funded from Falck Renewables Wind Nutberry Wind Farm.



11 Equitots Carluke

Equitots Carluke received £1,475 Renewable Energy Funds to support ongoing learning. Equitots Lee Valentine said: "The fund was an amazing support during the time we had to close and meant we could keep connected with young people in the community and continue an online learning journey around horses. It has allowed us to enhance our offerings to include online coaching and qualifications." Equitots also used the opportunity to push ahead with the publication of their own book to help support their work with children and young people. Funded from Climpby Wind Farm.



12 Eddlewood Bowling Club

Eddlewood Bowling Club Hamilton received a Renewable Energy Fund award of £10,000. Eddlewood Bowling Club treasurer Jim Conway said: "The grant we received has allowed a complete renovation of our lounge, this will indeed benefit the community who utilise the premises for varying activities, including kids dancing, pensioner's bingo, funerals, family functions etc. Without the grant we would have been unable to carry out the much needed renovation work for the benefit of the local community. The REF grant covering ongoing utilities helped ensure the future of our club, and allow us to welcome our community back, after Covid-19 restrictions are lifted." Funded from Clyde Development Fund Wind Farm.



13 Cambuslang Particip8

Cambuslang Particip8 were awarded £2,465 to help support some of the most vulnerable through Covid-19 restrictions. Cambuslang Particip8's Lindsay Brogan commented: "The REF grant enabled us to set up our Community HUB to be used as a food bank depot and donation centre, for those in need during the first Covid-19 lockdown back at the beginning of 2020 when it started to affect people's lives in a devastating way. Being able to pay for the HUB daily running costs meant we were able to join forces with other local charities and, begin the battle against the effects of coronavirus to support those in need within our local community." Funded from Clyde Development Fund Wind Farm.



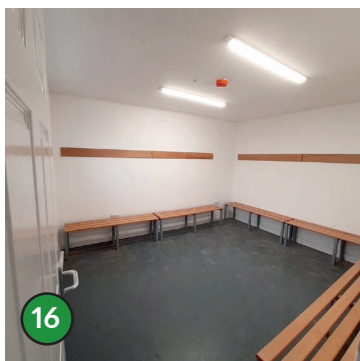
14 Blackwood and Kirkmuirhill resilience group

The Renewable Energy Fund provided £4,535 to Blackwood and Kirkmuirhill Resilience Group for an environmental art project for local children. Blackwood and Kirkmuirhill Resilience Group Chair Lesley Speedie said: "The project gave local children something to work on together even if they couldn't meet, we had some who were shielding and I know they really enjoyed being involved. The project has given our young people a sense of pride and community ownership, and overall, it has given them a positive and productive memory to look back on." Funded from Banks Renewables Kypemuir Wind Farm.



15 Carstairs Junction Welcome all Hub

Carstairs Junction Welcome all Hub received £5,000 to support the community through Covid-19 restrictions. Carstairs Junction Welcome all Hub's Dot Watson said: "Without the support from REF we would not have been able to provide the much needed support service for the communities we serve, especially during such unprecedented times. We have been able to buy not only healthy food options such as fruit and vegetables, but also equipment needed to give service users support in the areas of food poverty, health and well-being such as a laptop to provide support with Department of Work and Pensions access for those facing financial difficulties. With the demand on our service we have increased our volunteer number by six so that the much needed support can be sustained. The REF grant has allowed us to continue and support our most vulnerable in the community." Funded from Muirhall Wind Farm.



REF previously funded and recently completed projects

16 Strathaven Dynamos

Strathaven Dynamos AFC received £39,902 Renewable Energy Fund grant towards a new build facility costing £109,901. Strathaven Dynamos Frank McGraw said: "The facility is primarily directed towards local school-aged children to create additional and high quality facilities for physical and social activities, primarily based upon football and rugby training. This in turn supports the sustainability of the two local clubs with over 550 playing members plus over 100 qualified volunteer adult coaches. The REF filled a large gap in our capital costs for the facility. There is no doubt that we had exhausted most routes to bridging a sizeable gap and REF grant combination was the difference in making it happen. The pride in having this facility is massive for the clubs, players, volunteers, local schools and the general community. In fact it creates a clean, safe, high quality changing facility for young people of all ages and levels." Funded from High Dyke, Dykehead, Tanhill, and Couplaw Wind Farms.

17 Lanark Tennis Club

REF provided £19,021 funding support to an overall project cost of £62,427 to Lanark Tennis Club. Lanark Tennis Club President Allyson Matthews said: "Lanark Tennis Club boasts an amazing new clubhouse and two completely new courts, both of which have had the financial support from REF. A raft of new activities under the 'Tennis For All' ethos were rolled out in a difficult 2020, and 2021 sees plans for hosting 'Disability Tennis Coaching', 'West of Scotland League Tennis' and 'Structured Coaching' at all levels, school holiday camps and the reintroduction of social tennis when restrictions lift. None of this would have been possible without valuable input, council and support through the application process from REF staff." Funded from Scottish Power Renewables Blacklaw Wind Farm.

18 Carstairs Community Council

Carstairs Community Council were awarded £35,023 grant towards an overall project cost of £86,520 to redevelop and enhance the existing play area in Carstairs Junction, the work created a community hub that will bring families together while strengthening the relationships within our community and breaking down isolation barriers that often feature heavily in rural life. A picnic area was also created to provide a much needed seating area for the elderly and families using the park. It will also encourage visitors to the village to stay longer and have somewhere to enjoy lunch outside where children can play safely. It will also provide the village with an area that outdoor events can take place, leading to a happier, more united, community. Funded from Muirhall Wind Farm.

Renewable Energy Fund, Micro Grants and Clyde Wind Farm Fund projects



Micro grants

Community Councils (CC) across South Lanarkshire have each been given £5000 annually from the South Lanarkshire Renewable Energy Fund to provide micro grants to support local communities. As well as these 21 Community Councils, a further six are also providing micro grants from the Clyde Wind Farm Fund. Community Councils can award grants of up to £500 to support local constituted and non-constituted groups and, where appropriate, individuals. Each Community Council can also add conditions and limit grants as they deem most appropriate for their communities. (listed below).



19 Cambuslang Community Council

Cambuslang CC gave funding support to Cambuslang Football Academy 2007s who will use the grant to take the boys on an organised trip to play other teams in a football tournament. Giving many boys the first experience of this type. Funded from Scottish Power Renewables Whitelee Wind Farm.

20 Tarbrax Community Council

Tarbrax CC awarded funding that supported the Halloween Competition, this was organised for the community by Tarbrax CC and WAT IF. Sandford and Upper Avondale Community Council Sandford and Upper Avondale CC awarded funding to support the local allotment group to help cover some of the cost to the polytunnel and part to 'Sandford in Bloom'. Funded from Climpy Wind Farm.



21 Sandford and Upper Avondale Community Council

Sandford and Upper Avondale CC awarded funding to support the local Allotment Group to help cover some of the cost to the polytunnel and part to 'Sandford in Bloom'. Funded from Dungavel Wind Farm.

22 Burnside Community Council

Burnside CC awarded funding to support the second Rutherglen Guides. As the Girl Guides have moved their resources to paper based books and activity cards (rather than online) it meant they were able to purchase a badge book for every girl and all the unit activity cards. Since the first lockdown, guide meetings have moved online. As all the girls now have their own badge book, this has meant they can participate more readily in the meetings and they can work on badges at their leisure - giving them some constructive activities to help keep them busy. Without the support of the Micro Grant it would have been much more difficult to keep online guiding going. Funded from Blantyre Muir Wind Farm.



23 Bothwell Community Council

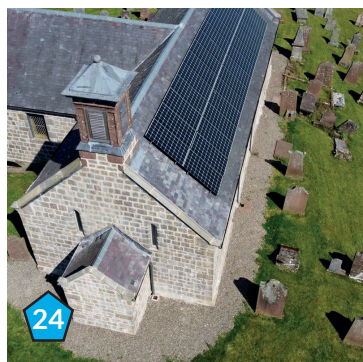
Bothwell CC part funded the recently completed work on the corner of Fallside Road and Main Street. This has been enhanced with some new planting and objects of interest to compliment the fabulous work done in regenerating this piece of land. The new picnic area proved an excellent addition for both young and old in the heart of our village. Funded from Scottish Power Renewables Whitelee Wind Farm.

Clyde Wind Farm Fund (CWFF)

“Over the last year the Clyde Wind Farm Fund has continued to support the communities in South Lanarkshire’s most rural area through grant awards, especially by providing additional Covid-19 funding to help sustain groups and organisations through financial difficulties caused by the pandemic.

As a panel we hope this leaves our rural groups in a strong sustainable position to come out of the restrictions. One of the interesting aspects of the current restrictions is that work on projects previously funded has continued and many people will not be aware that these projects are now complete or are nearing completion. Crawfordjohn Heritage Centre, Wiston Lodge outdoor classroom, Abington tennis court and Abington play park to name a few, which will benefit people and communities in our area from 2021. The award of £710,584 from Clyde Wind Farm Fund to the Abington Campus for Excellence also demonstrates how the fund can support rural services and sustainability and I look forward to seeing this open later in 2021. The fund will continue to support projects large and small across the rural towns and villages.”

Eric Carlyle, Chair of the Clyde Wind Farm Community Panel



Clyde Wind Farm Fund

Funds from Clyde Wind Farm (Scotland) Ltd

24

Crawfordjohn Heritage Venue Museum

CWFF provided £83,476 funding alongside £25,655 from the REF, an overall project cost of £128,273 for the Crawfordjohn Heritage Venue Museum to improve the environmental conditions within the museum by installing humidity controlled conservation heating and ventilation along with the installation of photovoltaic solar panels and battery storage. This much-loved community-run facility celebrates local social history and heritage through its collection of artefacts from the Parish of Crawfordjohn. CWFF also provided £1,500 funding to help meet running costs during the COVID enforced closure which resulted in loss of income from summer visitors and the annual fundraiser.

25

Thankerton Bowling Club

CWFF provided £7,228 to Thankerton Bowling Club for refurbishment and modernisation works to improve access to clubhouse facilities for local people and groups. The Club has also benefited from a £7,814 CWFF award to purchase a bespoke lawn-mower to maintain a top quality green.

26

Leadhills Reading Society

CWFF provided £9,070 funding support to Leadhills Reading Society who undertook an ambitious marketing initiative to improve access to the geographically remote Leadhills Miners Library. Virtual visits are now offered to a global audience who can view a new promotional video together with a unique archive of digitized books. A celebration of a precious resource of international significance from the oldest subscription library in the British Isles. CWFF also provided £1,605 to help the library through the COVID crisis.

27

The Biggar Institute

CWFF provided £10,000 funding support to an overall project cost of £12,528 to The Biggar Institute. This community based hall is used by a wide range of community groups, some 150-200 people weekly. Their grant will enable improvements including roofing works and new windows that conserve heat and reduce carbon emissions.





© Ross Dolder



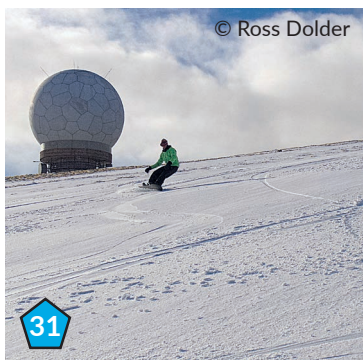
28 Leadhills Community Allotment

CWFF provided £10,876 funding support to an overall project cost of £14,502 to Leadhills Family Action Group. Leadhills Community Allotment will flourish thanks to funding provided for refurbishment and development works. The project focusses on improving health and wellbeing, enjoying the outdoors and sharing with the community. Funding will be used to improve access, build new raised beds to encourage participation from primary school children and the wider community.



29 Rural Capital Generation Fund

CWFF provided £710,000 funding to an overall project cost of £1.5m to Abington Community Development Group. The funding will be used to transform Abington Old School into Abington Campus Enterprise (ACE), bringing a new energy and vitality to Abington and the local area. This enterprising project is aimed at promoting economic activity and enhancing the quality of life for local people, creating vital new jobs to manage and develop the social enterprise and volunteering opportunities and programmes. Fast broadband connectivity, meeting rooms, office space, leisure and gym facility and green community space will be available to local businesses and communities. As a funding package with CWFF, the Renewable Energy Fund is providing funding support of £149,000 and the Rural Capital Generation Fund £726,000, totalling a major investment into the local area.



© Ross Dolder

30 Wiston Lodge

CWFF provided £147,278 funding to an overall project cost of £309,967 to Wiston Lodge. The outcome is a new modern outdoor education hub with bespoke design offering a seamless blend from indoor to outdoor learning activities. Specialist equipment, modern changing and showering facilities including features to meet additional support needs will enhance the interior. Heating is provided by the Victorian Main Lodge's biomass system which was also supported by CWFF. The stunning exterior is clad in timber that will age with its woodland surroundings.

31 Lowther Hills Ski Club

CWFF contributed £39,890 funding to an overall project cost of £90,000 to Lowther Hills Ski Club. The Club now has a much needed welcoming mountain lodge for visitors and locals to enjoy snow sports, mountain biking, hill-walking, roller skiing, paragliding, and events like Lowther Hills Snowball Cycling Sportive and the Scottish Schools Snowsports Association Alpine Series. This community-driven sustainable tourism initiative offers a Highland-like experience, on our doorstep!

CWFF previously funded and recently completed projects



Connect2Renewables employability initiative

The Connect2Renewables employability initiative, delivered by South Lanarkshire Council and Banks Renewables, has enabled 19-year-old Coalburn teenager Isla Macdonald who 'lives and breathes' music to follow her dreams and study in Glasgow by part-funding her course fees and travel costs.

Paid for by a proportion of the community benefit funds from Middle Muir Windfarm, Crawfordjohn and Kype Muir Windfarm, Strathaven, the fund aims to help people living in 24 of the area's most rural communities, which fall within a 10km radius of either windfarm.

Isla, a former pupil of Lesmahagow High, is one of more than 300 local people already receiving help as she studies for an HND in Music Performance at the Academy of Music and Sound in Glasgow.

"Having access to the funding has allowed me to attend the college that is best suited for me. As someone who has learning difficulties, I find larger classes and locations difficult and my college is the perfect size to allow me to get all the help I need. The fund also helps me pay for the travel costs of travel from what is quite a remote area."

Councillor Gladys Miller, Chair of the council's Finance and Corporate Resources committee, said: "The initiative is delivered by the council and Banks Renewables as part of Banks' commitment to the South Lanarkshire economy and its communities, and operates alongside a variety of other local initiatives. The aim is to provide an 'open door' encouraging those people who need it most to get in touch and take advantage of what is a flexible and responsive programme."

Robin Winstanley, external affairs manager, Banks Group, said: "Stories like Isla's really make us proud to be part of this initiative and our collaboration with the council. It's so important to us that renewables projects deliver benefits with a meaning to communities, and this is a great example of it. We wish Isla the best in her career and look forward to more progress with this exciting partnership."

Full details of the scheme, eligibility criteria and advice on how to apply can be found on the council's website or you can email the team directly.

How to apply to these funds

For details on the two funds please follow the links below:

[Renewable Energy Fund Grants](#)

[SSE Clyde Wind Farm Fund](#)

Brief summary of the funds key points

Who can apply?

Public organisations and agencies, partnerships, trusts and other none governmental organisations, constituted community groups and social enterprise or not for profit organisations. Applicants and projects must be within eligible windfarm areas primarily rural South Lanarkshire.

Your project must meet at least one of the following themes:

- Theme one: Stronger communities
- Theme two: Prosperous communities
- Theme three: Healthy and active communities
- Theme four: Sustainable environmental communities

The fund covers capital costs.

For grant requests under £10,000 the funds can fund 100% of the project.

If the grant request is over £10,000 you will require match funding which is dependent on the fund and project.

CWFF and REF are community benefit funds, projects require evidence of community support and the benefits the project will bring to communities near the windfarms.

If you have an eligible project please log an enquiry at: [Community Benefit Funds](#)

At the enquiry stage, briefly explain the nature of the project its need and how it will benefit the community and the community support you have for the project, the overall project cost and the funding your project will require to complete the overall project. Any questions at enquiry stage are carried through the online Grantvisor system.

Eligible enquiries will progress to the full application stage and guidance can be given in developing projects and costs.

For further information on Micro Grants please visit:

[Micro Grants](#)

For more funding information please go to South Lanarkshire External Funding please visit:

[External Funding](#)



South Lanarkshire Renewable Energy Fund

Managed by



Printed on eco-friendly paper. Please recycle.
Designed by Economic Development Service, South Lanarkshire Council. April 2021.
All material ©Crown Copyright South Lanarkshire Council unless otherwise stated.
Front cover image: Little Sparta. Back cover image: Muirhall Windfarm