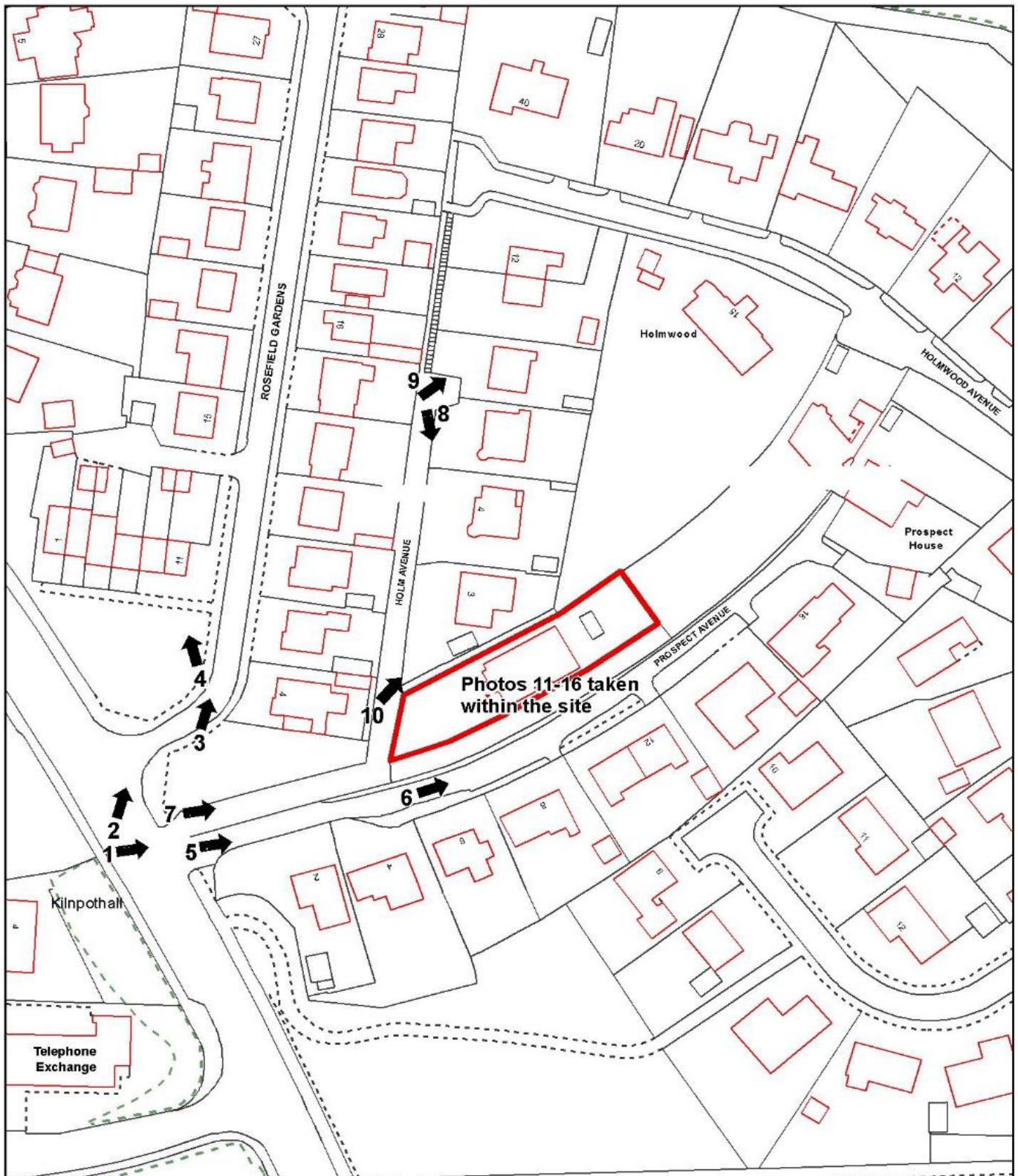


**Planning Review for application P/19/0890 Holm Avenue, Uddington**  
**Location of photographs**



This map indicates from where photographs were taken



**Community and Enterprise Resources  
 Planning and Economic Development**



Scale: 1:1,250

Date:

© Crown copyright and database rights 2020 OS 100020730. You are permitted to use this data solely to enable you to respond to, or interact with, the organisation that provided you with the data. You are not permitted to copy, sub-licence, distribute or sell any of this data to third parties in any form.