

**AREA
COMMITTEE
PROFILE**

CLYDESDALE

August 2010

POPULATION PROJECTIONS - CLYDESDALE

Clydesdale's population in 2009 is estimated to be 61,500. Just under 13% are aged 65-79 and 4% are aged 80 & over. A total of 24% are aged under 20.

Over the next five years, the population is projected to rise by just under 2% but within this overall situation, the numbers aged under 19 are projected to fall by 2% whilst the numbers aged 65-79 and 80 & over are due to rise by 13%. The numbers aged under 5 are expected to fall by 7% and those aged 15-19 by 9%

Over the period until 2019, the total population of Clydesdale is projected to increase to 63,860, or by 3.8%. The numbers aged under 19 are projected to fall by 2.3% - and within this the numbers aged under 5 would fall by 7% and the numbers aged 15-19 by 17%. The numbers aged 65 to 79 would rise by a quarter and those aged 80 & over by over a third.

Table 1: Population projections for Clydesdale 2009-19

	Total	Under 19	20 to 64	65 to 79	80 & over
2009	61,497	14,531	36,483	7,826	2,657
2014	62,685	14,193	36,587	8,895	3,010
2019	63,862	14,203	36,311	9,775	3,573
2009-14	1.9%	-2.3%	0.3%	13.7%	13.3%
2009-19	3.8%	-2.3%	-0.5%	24.9%	34.5%

Figure 1 shows the population projects for both Clydesdale and South Lanarkshire as a whole over the 2009-19 period. As this figure shows, Clydesdale's population is projected to rise faster than in South Lanarkshire as a whole, with this being driven by higher rates of increase here in the over 64 age groups. The numbers aged under 19 are expected to fall more slowly here but the numbers aged 20-64 are expected to fall here compared to a rise in South Lanarkshire as a whole.

EMPLOYMENT FORECASTS - CLYDESDALE

In 2010, it is estimated that employment in Clydesdale is around 18,500. Of these, 35.7% (6,540 jobs) were in Public & Other services, 23.8% (4,370 jobs) in Distribution, Hotels & Catering, and 13.6% (2,500 jobs) in Finance & Business services. Agriculture, Forestry & Fishing accounted for 6.2% or 1,150 jobs of the area's employment with Manufacturing accounting for 5.5% (1,020 jobs).

Over the 2010-2018 period, it is forecast that employment will fall by 1.6% or by -300 jobs. Employment is forecast to rise in only Finance & Business Services (up +14.6%) and in Distribution, Hotels & Catering (+2.5%), and to fall in the remaining seven sectors. Mining & Quarrying is forecast to have the largest percentage decline, of -34.9%, with Agriculture, Forestry & Fishing employment forecast to fall by -25.5%.

Table 2 shows the estimated total employment figures by industry for Clydesdale in 2010 and 2018 and the percentage changes forecast over this period along with the comparable South Lanarkshire percentage change.

Table 2: Employment forecasts for Clydesdale 2010-2018

Industry	2010-2018			
	2010	2018	%	South Lanarkshire %
Agriculture, Forestry, Fishing	1,150	860	-25.5%	-25.5%
Mining & Quarrying	270	180	-34.9%	-33.3%
Manufacturing	1,020	930	-8.6%	-1.6%
Electricity, Gas & Water	10	10	-18.6%	-12.0%
Construction	1,430	1,410	-1.1%	2.4%
Distribution, Hotels & Catering	4,370	4,480	2.5%	2.0%
Transport & Communications	1,030	960	-7.0%	3.7%
Finance & Business Services	2,500	2,860	14.6%	19.4%
Public & Other Services	6,540	6,340	-3.0%	-6.9%
TOTAL	18,330	18,030	-1.6%	+0.6%

Figure 2 shows the employment forecasts for both Clydesdale and South Lanarkshire as a whole over the 2006 to 2018 period. As this figure shows, Clydesdale's employment is forecast to decrease at a faster rate than in South Lanarkshire as a whole over this period.

Table 3 shows key indicators for Clydesdale related to issues around Health Inequalities, Early Years, Anti-poverty and Economic Recovery as well as Community Safety and Population change.

Table 3: Key indicator Table for Clydesdale

INDICATOR	CLYDESDALE		SOUTH LANARKSHIRE	
Population change 2001-2008	+2,531	+4.3%	+7,750	+2.6%
HEALTH INEQUALITIES				
Health Deprivation 2007	7,740	12,795 per 100,000	42,995	13,884 per 100,000
EARLY YEARS				
Children in Out of work families CTC (Aug 07)	1,895	19.9%	10,755	21.6%
MCMC leavers (2007/08)	99	13.8%	425	11.9%
ANTI-POVERTY				
Children all families CTC (Aug 07)	9,565	72.6%	49,725	71.8%
Pensioners receiving PC – GE only (Aug 2009)	955	29.1%	5,230	28.1%
ECONOMIC RECOVERY				
JSA claimants Jan 2010	1,813	4.8%	9,877	5.1%
JSA change Jan 09 to Jan 10	+553	+43.9%	+3,379	+52.0%
COMMUNITY SAFETY				
Recorded crime (2007/2008)	5,337	882 per 10,000	29,995	969 per 10,000

Note: CTC – Child Tax Credit
 PC-GE – Pension Credit Guarantee Element only
 JSA – Job Seekers Allowance
 Health deprivation – Those claiming health related benefits
 MCMC – More Choices, More Chances school leavers

Figure 1 : Population % change 2009-19

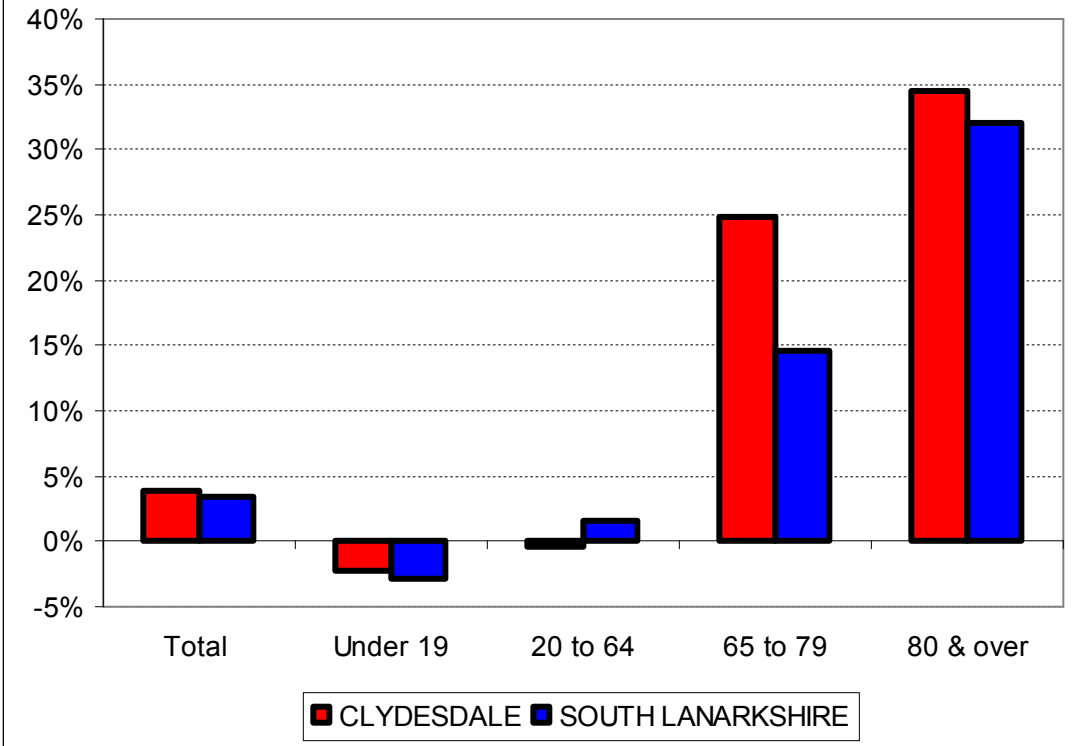


Figure 2 : % change in Total employment

