

Report

Report to:	Climate Change and Sustainability Committee
Date of Meeting:	28 April 2021
Report by:	Executive Director (Community and Enterprise Resources)

Subject:	Sustainable Development and Climate Change Strategy Action Plan 2021-22
----------	--

1. Purpose of Report

1.1. The purpose of the report is to:-

- ◆ Seek approval of Sustainable Development and Climate Change Strategy Action Plan for 2021-22.

2. Recommendation(s)

2.1. The Committee is asked to approve the following recommendation(s):-

- (1) that the 2021-22 action plan for the Sustainable Development and Climate Change Strategy 2017-2022, be approved.
- (2) that it be noted that the progress of the action plan will be reported to the Climate Change and Sustainability Committee at Q2 and Q4.

3. Background

3.1. The Council's Sustainable Development and Climate Change Strategy (SDCCS) was approved on 6 December 2017 and covers a five-year period from 2017 to 2022. The strategy sets out outcomes and actions organised around three sustainable development themes:

- ◆ Sustainable Council
- ◆ Sustainable Environment
- ◆ Sustainable Communities

3.2. Delivery of actions within the strategy provides the main focus for our sustainable development activity and also enables the Council to fulfil its duties under the Local Government (Scotland) Act 2003, the Climate Change (Scotland) Act 2009 and the Council's contribution to the UN's Sustainable Development Goals.

3.3. The strategy action plan sets out specific actions to be undertaken to deliver objectives under each theme. The action plan is monitored using IMPROVe and the previous reporting arrangement was to report progress on the action plan to the Executive Committee following Q2 and Q4. It is proposed that progress on the action plan will now be reported to the Climate Change and Sustainability Committee at Q2 and Q4.

4. Action Plan 2021-22

- 4.1. The actions have been agreed with relevant Services across the Council and have been developed using the sustainable development and climate change framework – this sits within the strategy document – and sets out the strategy's outcomes and how we intend to achieve them over the five year period. A copy of the framework can be found at Appendix 1.
- 4.2. The action plan has been divided by the key themes outlined at 3.1. Each theme includes:-
- ◆ Performance measures providing information on how well the Council is performing against the strategic outcomes in the strategy.
 - ◆ Contextual measures providing a health check against outcomes. The Council contributes to these measures, however, they are wider than the scope and influence of the Council.
 - ◆ Improvement actions that will be taken during 2021-22 to respond to the challenges ahead and contribute to meeting the outcomes in the strategy.
 - ◆ Related Sustainable Development Goals
- 4.3. A copy of the action plan for 2021-22 can be found at Appendix 2 and the Committee is asked to approve this. Progress at Q2 will be presented to the Committee at the next meeting scheduled for 25 August 2021.

5. Employee Implications

- 5.1. All Resources are required to contribute to the implementation of the Sustainable Development Climate Change strategy and Carbon Management Plan to ensure that actions and targets are met. The Sustainable Development Officer and Carbon Management Officer monitor and report the Council's progress.

6. Financial Implications

- 6.1. Actions within the Sustainable Development and Climate Change Strategy action plan for 2021-22 have been funded from existing Resource budgets or securing external funding.

7. Climate Change, Sustainability and Environmental Implications

- 7.1. The Sustainable Development and Climate Change Strategy contributes towards the Public Sector Climate Change Duties, the Biodiversity Duty and the UN Sustainable Development Goals. The current strategy underwent the Strategic Environmental Assessment process during development.

8. Other Implications

- 8.1. Failure to meet the Council's sustainable development and climate change objectives, as per the strategy, is one of the Council's top risks.

9. Equality Impact Assessment and Consultation Arrangements

- 9.1. An equality impact assessment was carried out on the Sustainable Development Strategy. Public and stakeholder consultation on the Sustainable Development and Climate Change Strategy were undertaken.

Michael McGlynn

Executive Director (Community and Enterprise Resources)

7 April 2021

Link(s) to Council Objectives and Values

Work with communities and partners to promote high quality, thriving and sustainable communities

Previous References

- ◆ Executive Committee report on 6th December 2017 entitled 'Sustainable Development and Climate Change Strategy'

List of Background Papers

- ◆ The Climate Change (Scotland) Act 2009
- ◆ Sustainable Development and Climate Change Strategy 2017-2022
- ◆ UN's Sustainable Development Goals

Contact for Further Information

If you would like to inspect the background papers or want further information, please contact:-

Lesley Hinshelwood, Sustainable Development Officer

Ext: 4610 (Tel: 01698 454610)

E-mail: lesley.hinshelwood@southlanarkshire.gov.uk

Sustainable Development and Climate Change Strategy

Framework: summary of strategic outcomes and how we intend to achieve them

Theme	Outcome	How we intend to achieve outcomes
Sustainable Council	The council's carbon emissions are managed and reduced	Implement our Carbon Management Plan to reduce the council's carbon footprint in line with the Scottish Government's targets
		Continue to implement energy efficiency measures across council facilities including investment in renewable and low carbon energy solutions
		Implement measures within the council's fleet to contribute to the Scottish Government's ambition of the decarbonisation of road transport
		Continue to improve the efficiency of our business travel and promote more sustainable travel options for employees
	The council is environmentally responsible in the procurement, use and disposal of resources	Continue to develop procurement processes to improve environmental outcomes and ensure compliance with the council's sustainable procurement duty
		Create a culture of resource efficiency in the workplace
		Maximise the use of environmentally responsible materials and reduce, reuse and recycle construction waste in new and refurbished council facilities
	The public sector climate change duties are further embedded in service delivery and partnership working	Demonstrate leadership and further develop partnership approaches in sustainable development and climate change action
		Ensure that sustainable development and climate change is used as a guiding principle in council plans, policies and strategies and these incorporate environmental considerations
		Take account of the public sector climate change duties (mitigation, adaptation and acting sustainably) when making decisions about the use of our assets and capital investment in our estate
		Continue to raise awareness of sustainable development and the business impacts of climate change with our employees and develop the skills required across the council to influence and adapt to change

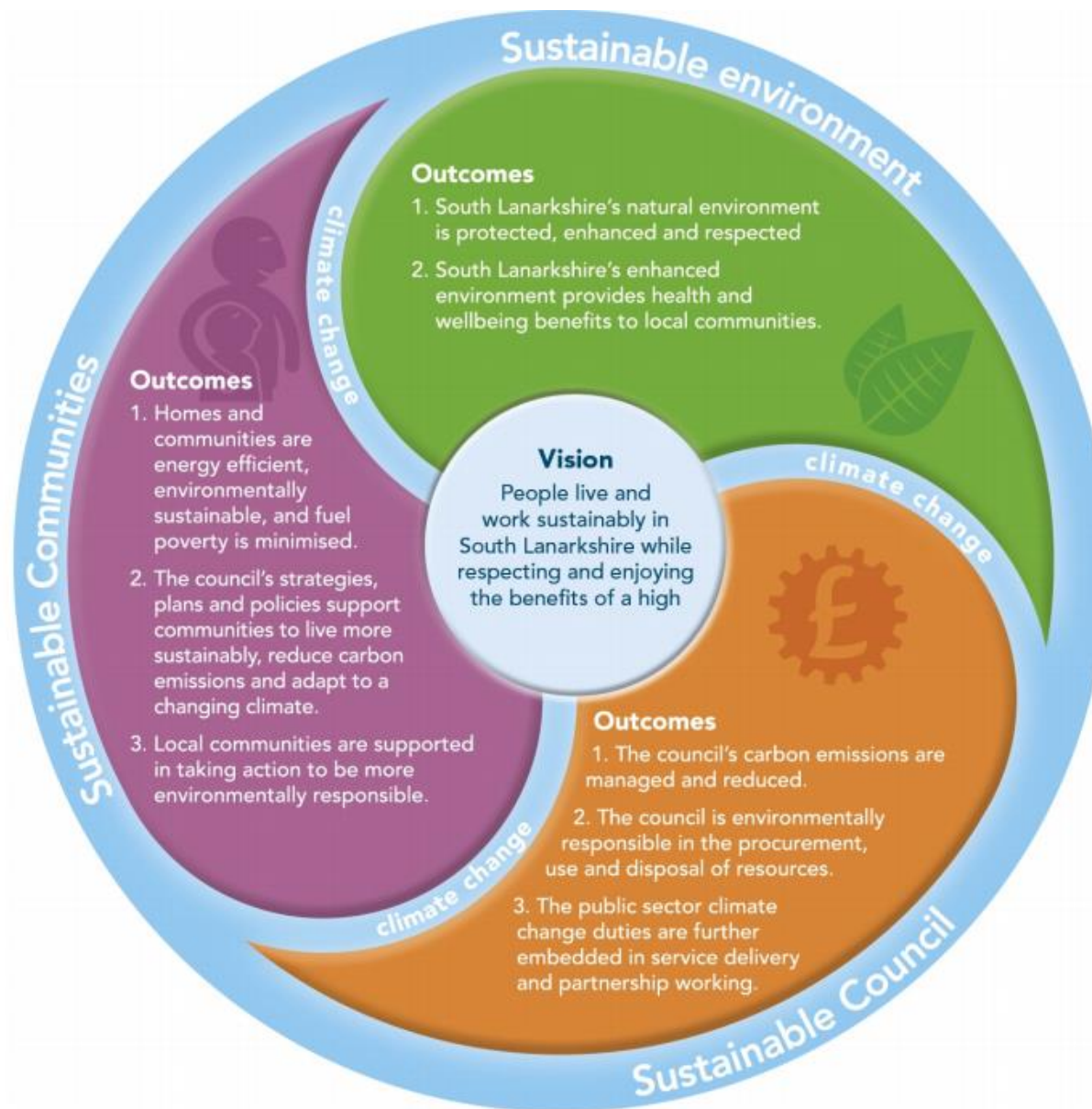
Theme	Outcome	How we intend to achieve outcomes
Sustainable Environment	South Lanarkshire's natural environment is protected, enhanced, and respected	Review and assess air quality throughout South Lanarkshire in line with our Air Quality Strategy
		Ensure our planning and land use policies protect and enhance the natural environment and ecosystem services
		Continue to measure progress and report on the state of South Lanarkshire's

		environment
		Meet our statutory biodiversity duty by implementing our Biodiversity Duty Implementation Plan which will enhance and protect biodiversity through managing our own estate
		Contribute to South Lanarkshire Biodiversity Partnership's action plan ensuring ecosystems are used sustainably and strengthened
		Use our natural environment to help mitigate and adapt to the impacts of climate change
	South Lanarkshire's enhanced environment provides health and wellbeing benefits to local communities	Continue to develop the Greenspace Strategic Partnership to enable people to learn, play and be physically active outdoors in South Lanarkshire
		Work in partnership to develop and implement South Lanarkshire's Outdoor Access Strategy
		Continue to educate our young people about the local environment in which they live and encourage them to reduce the negative impacts they have upon it
		Provide environmental volunteering opportunities and support community groups to manage local environmental projects

Theme	Outcome	How we intend to achieve outcomes
Sustainable Communities	Homes and communities are energy efficient, environmentally sustainable, and fuel poverty is minimised	Explore options for innovative and affordable low carbon energy and heating solutions in local areas that will contribute towards national climate change ambitions
		Continue to invest in energy efficiency measures in council homes including improvements to the fabric of the building, installation of affordable low carbon heating and the use of renewable technologies
		Work in partnership to provide advice and support to local communities to help increase energy efficiency at home and minimise fuel poverty
		Increase focus on sustainability for new developments through innovative design and delivery, using natural resources and environmentally responsible building materials, and incorporating low carbon energy solutions
		Incorporate inclusive and sustainable place-making principles into the design and delivery of area-based housing development projects and programmes
	That council's strategies, plans and policies support communities to live more sustainably, reduce carbon emissions and	Continue to divert waste from landfill by providing and encouraging the effective use of household waste management services across South Lanarkshire
		Work in partnership to help build resilience in local communities and mitigate against the potential increase of health and social inequalities from the impacts of climate change

	adapt to a changing climate	Work in partnership to ensure that local infrastructure is resilient to the impacts of climate change and seek opportunities for including blue-green infrastructure to mitigate and adapt to the impacts of climate change
		Encourage the uptake of low emission vehicles across South Lanarkshire
		Help to reduce vehicle emissions and congestion and connect our communities through infrastructure improvement projects in favour of, and integration between, walking, cycling, and using public transport
		Work in partnership to support and encourage sustainable travel choices for people within South Lanarkshire, with emphasis on walking and cycling promoting a healthier lifestyle
		Ensure that opportunities for environmental benefits are realised through our procurement practices and externally funded programmes such as renewable energy fund and developers' contributions
		Supporting renewable energy generation across South Lanarkshire helping to reduce the area's carbon emissions and promote economic growth
		Encourage sustainable production and consumption in the business community and support the growth of a low carbon industry in South Lanarkshire
	Local communities are supported in taking action to be more environmentally responsible	Support communities to access funding for environmentally sustainable projects or action on climate change
		Communicate and engage with communities on environmental and climate change mitigation and adaptation issues empowering further local action
		Support local communities to be more resilient to the impacts of climate change
		Embed sustainability and climate change in the school curriculum and continue to engage young people in environmental education through Eco Schools and similar programmes
		Work in partnership to provide the appropriate skills required for employment opportunities in the low carbon and renewable energy industry
		Devise and implement policies to promote sustainable tourism that creates jobs and promotes local culture and products

Sustainable Development and Climate Change Strategy Action Plan 2021-22



Theme: Sustainable Council

Goal

The goal of the Sustainable Council theme is:

‘South Lanarkshire Council is a leading example in environmental performance across South Lanarkshire and that sustainable development principles and tackling climate change, in response to the climate emergency, underpins all council activities, decisions and actions’

Impact

The Council will improve its environmental performance; end its contribution to global warming, and service delivery will be resilient to the impacts of a changing climate

Sustainable Development Goals

Related Sustainable Development Goals for Sustainable Council theme



Outcomes

We will know we are making good steps towards achieving this theme's goal when:

1. **The council's carbon emissions are managed and reduced**
2. **The council is environmentally responsible in the procurement, use and disposal of resources**
3. **The public sector climate change duties are further embedded in service delivery and partnership working**

Improvement actions and performance measures

The actions during 2020-21 that contribute towards these outcomes and performance measures for each of the outcomes are listed below:

Outcome 1: The Council's carbon emissions are managed and reduced

The Council will continue to implement its Carbon Management Plan to reduce its carbon footprint in line with Scotland's national reduction targets of 56% by 2020, 75% by 2030 and 90% by 2040, based on 1990 baseline, and achieving net-zero emissions by 2045. The sources that are included in the scope of the Council's carbon footprint are: energy from Council buildings, household waste, Council fleet, employee business travel, and energy from street lighting.

Performance Measures	Baseline	Target
Reduction in the council's greenhouse gas emissions achieved by March 2022, compared to 2020-21 (buildings, fleet, household waste, street lighting, business travel)	2020-21	5% reduction (Council target)
Overall percentage reduction in the Council's carbon footprint since the Council's original baseline of 2005-06	2005-06	Reduction in the Council's carbon footprint (Council Target)
Overall percentage reduction in the Council's carbon footprint compared to Scotland's national target of 75% reduction by 2030 (based on 1990 levels)	1990 levels *	75% reduction by 2030 (National Target – Climate Change Bill)
Percentage reduction in energy consumption across the Council's estate for 2020-21 compared to 2013-14 baseline year	2013-14	Reduction in energy consumption (Council Target)
Percentage of non-domestic buildings that are heated through low/zero carbon technologies	2021-22	70% of non-domestic buildings by 2032 (National Target – energy route map)
Percentage of the Council's cars and light vehicles that are ultra-low emission vehicles	2021-22	Contextual Measure Phase out petrol and diesel cars from public sector fleet by 2025 (Climate Change Plan update 2020)

* (assuming a 12% reduction between the Scottish Government's baseline year of 1990 and the Council's baseline year of 2005. This is equivalent to the Scottish Government's percentage reduction for the same period. It equates to 0.8% reduction each year (1990-2005) which is below the average 2% reduction trend each year the Council has been on since 2005 to 2020.)

Improvement Actions for 2021-22	Steps we will take to deliver our actions	Lead
Establish new carbon reduction targets for the Council in line with the climate change bill 2019	- Review carbon reduction targets and recommend new targets for the Council, with approval from the climate change and sustainability committee by March 2022	CER - Support

Continue to implement energy efficiency measures across council facilities including investment in renewable energy solutions and low/ zero-carbon heating	<ul style="list-style-type: none"> - Number of projects delivered as part of the CEEF programme during 2021/22 - Agree a strategy for the transition of non-domestic buildings to low/ zero carbon heating 	HTR
Create the conditions for the decarbonisation of the council's fleet	<ul style="list-style-type: none"> - Implement year two of the Fleet Strategy (2020-2025) Action Plan and monitor its impacts, including emissions reduction levels and the trialling of new technologies 	CER - Fleet and Environmental
Enable employees to walk and/ or cycle for business travel and commuting	<ul style="list-style-type: none"> - Activities/initiatives implemented during 20/21 to enable and encourage, where possible, employees to walk and cycle for business travel and commuting - Review number of cycling friendly locations during 2021-22 - Develop case study examples from the 'Cycle to Work' Scheme on the impact this scheme has had on staff engaging in active travel 	FCR - Personnel

Outcome 2: The council is environmentally responsible in the procurement, use and disposal of resources

The Council will further embed the principles of a circular economy, which is key to sustainable development and improving the Council's environmental performance. This will also help to create a culture of resource efficiency across the Council

Performance Measures	Baseline	Target	
Percentage reduction in the procurement of single-use plastic items across the Council compared to the baseline year of 2018-19	2018-19	% Reduction in single-use items procured (Council target)	
Reduce embodied carbon from construction (new builds and refurbishment)	2020-21	At least 20% of the total value of materials derive from recycled and reused content	
Improvement Actions for 2021-22	Steps we will take to deliver our actions		Lead
Continue to develop procurement processes to improve environmental outcomes and ensure compliance with the council's sustainable procurement duty	<ul style="list-style-type: none"> - Progress with sustainable procurement actions as identified through the Flexible Framework action plan. - Consider wider training opportunities on use of prioritisation tools - Update Sourcing Strategy to further embed 		FCR - Procurement

	<p>sustainability measures from evaluation to contract management</p> <ul style="list-style-type: none"> - Using the prioritisation tool undertake prioritisation assessments for construction, social care and information technology categories 	
Promote the 'reduce, reuse and recycle' principle across the Council to make better use of materials and create less damage to the environment	<ul style="list-style-type: none"> - Initiatives implemented during 2020-21 to reduce single use items across the Council - Initiatives implemented during 2020-21 to recycle more within Council workplaces - Introduce a reuse scheme for employees and investigate expanding this to schools - Involvement in national campaigns promoting the circular economy 	<p>All Resources</p> <p>CER – waste</p> <p>CC&S Steering Group</p> <p>CER – support</p>
Establish further baselines for performance measures to demonstrate 'The Council is environmentally responsible in the procurement, use and disposal of resources'	<ul style="list-style-type: none"> - Develop an understanding of the emissions from the Council's supply chain to further reduce emissions from procurement of goods and services - Further mainstream the principles a circular economy in the Council's procurement of goods and services, and service delivery 	CC&S Steering Group

Outcome 3: The Public Sector Climate Change Duties are further embedded in service delivery and partnership working

The Council will continue to deliver on its public sector climate change duties - climate change mitigation, climate adaptation, and acting sustainably - and further embed these duties in its activities, decisions, and actions. It will provide leadership on climate change action across the local authority area and work collaboratively with partners and communities in the transition to a net-zero South Lanarkshire and reducing climate risks

Performance Measures	Baseline	Target
Self-evaluation results using Climate Change Assessment Tool	2017	Continued Improvement
Carbon emissions in tonnage for South Lanarkshire: emissions within scope of Local Authority. (figures from BEIS with a 2-year lag)	2021 (2019 figures)	Contextual Measure

Percentage reduction on area-wide emissions compared to previous year: emissions within scope of Local Authority (figures from BEIS with a 2-year lag)	2020 (2018 figures)	Contextual Measure
Per capita: emission within scope of Local Authority (figures from BEIS with a 2-year lag)	2021 (2019 figures)	Contextual Measure
Improvement Actions for 2021-22	Steps we will take to deliver our actions	Lead
Review and conclude the Council's Sustainable Development and Climate Change Strategy (2017-2022), and develop the new strategy (2022-2027)	<ul style="list-style-type: none"> - Complete review and development sessions with various stakeholders including Council officers, local community groups, members of the public, young people in schools and further education, Community Planning Partners, and local businesses, by August 2021 - Develop a draft strategy for the Climate Change and Sustainability Committee approval by September 2021 - Undertake a public consultation on the draft strategy and Strategic Environmental Assessment by December 2021 - Develop final strategy for the Climate Change and Sustainability Committee approval by March 2022 	CER – Support
Continue a collaborative approach to climate adaptation and resilience through the city region's Climate Ready Clyde Partnership	<ul style="list-style-type: none"> - The Council's contribution to implementing year 1 of Climate Ready Clyde's Adaptation Strategy Action Plan 	CER - Support
Continue to raise awareness of climate adaptation and resilience across the Council, build internal capacity, accelerating adaptation action, and encourage dialogue on climate adaptation and resilience with communities	<ul style="list-style-type: none"> - Apply Adaptation Scotland's Capability Framework to understand the Council's capability level and areas for improvement 	CER - Support
Ensure Strategic Environmental Assessment of all appropriate policies, plans, programmes and strategies is undertaken	<ul style="list-style-type: none"> - Produce annual SEA report for Executive Committee, and other governance groups, which includes an assessment of the impact the SEA process has had on the preparation of the plans, policies and strategies, and the difference it had on the final documents 	CER - Planning and Economic Development

Maximise funding to further deliver the Council's climate change duties (mitigate, adapt and act sustainably) across the Council and wider area	<ul style="list-style-type: none"> - Create a plan that maximises the environmental impact across South Lanarkshire using the £2m Climate Challenge South Lanarkshire budget and establish performance measures for each project to report impact 	CC&S Steering Group
Introduce the changes from the Climate Change (Duties of Public Bodies: Reporting Requirements) (Scotland) Amendment Order 2020 which comes into force for reporting year 2021-22	<ul style="list-style-type: none"> - Establish how the Council will align its spending plans and use of resources to deliver its emission reduction targets - Investigate setting targets for indirect emissions and a date for zero direct emissions for the Council - Publish an annual report on the Council's progress in achieving its carbon reduction targets on the Council website by 30th November 2021 	CC&S Steering Group
Build on current partnerships and relations across South Lanarkshire that will support and enable a transition to net-zero area-wide emissions and mitigate climate risks	<ul style="list-style-type: none"> - Work with Community Planning Partners in embedding climate change action in the work of the CPP and planning for place with a proposal for a collaborate approach to tackling climate change in South Lanarkshire to the CPP board in June 2021 - Investigate the potential of establishing a South Lanarkshire Climate Change Charter/Statement to allow businesses to sign up to 	CC&S Steering Group

Theme: Sustainable Environment

Goal

The goal for the Sustainable Environment theme is:

‘South Lanarkshire’s high-quality natural environment and public spaces provides essential services and shared benefits for people and wildlife’

Impact

The quality of the natural environment plays a crucial role in people’s physical, mental, and social well-being; and local communities should have access to high quality open space within easy walking distance. High-quality public spaces and natural environment is also important from an economic perspective and can attract businesses and investment; and can help to increase house prices in the area. The natural environment provides us with resources essential to meet basic needs like clean air, fresh water, food, medicine, raw materials, and energy (ecosystem services). Biodiversity is a key indicator of a healthy ecosystem. Healthy ecosystems can also provide natural solutions to climate mitigation and adaptation.

Sustainable Development Goals

Related Sustainable Development Goals for Sustainable Environment theme



Outcomes

We will know we are making good steps towards achieving this theme’s goal when:

1. South Lanarkshire’s natural environment is protected, enhanced, and respected
2. South Lanarkshire’s enhanced environment provides health and wellbeing benefits to local communities

Action and performance measures

The actions during 2020-21 that contribute towards these outcomes and performance measures for each of the outcomes are listed below:

Outcome 1: South Lanarkshire's natural environment is protected, enhanced, and respected

The Council will continue to work in partnership to protect, enhance and respect the natural environment and public spaces within South Lanarkshire. This includes South Lanarkshire's countryside and greenspaces, biodiversity, air, and land quality, contaminated and derelict land. The Council has a public sector duty to take care of nature all around us, not just in specific protected sites. The natural environment also provides carbon sinks to help offset carbon emission in our transition to net-zero emissions and helps to reduce the impact from climate risks i.e. flood management solutions and providing cooling and shade.

Performance Measures	Baseline	Target	
Percentage of streets found to be acceptable during survey (Local Environmental Audit and Management System street cleanliness score)	2021	Improvement on previous year (>94.8%) (Based on three previous surveys – two SLC, and one ny Keep Scotland Beautiful Target)	
The biennial State of the Environment report for South Lanarkshire provides a baseline for identifying local environmental issues and provides an overview of environmental conditions	2019 report	Contextual Measure (Status and trend assessment of the 55 indicators compared to previous report)	
Number of Local Nature Reserves declared	2020	Increase in the number of LNRs across South Lanarkshire	
Proportion of LNRs with active community management groups	2020	100% of designated LNRs	
Improvement Actions for 2021-22	Steps we will take to deliver our actions		Lead
Work in partnership to reduce land and air pollution within South Lanarkshire, minimising the impacts on human health and the natural environmental	<ul style="list-style-type: none"> - Progress the development of a formal Litter Strategy that identifies a range of options and timescales to promote the new Code of Practice on Litter and Refuse, with particular emphasis on prevention - Implement Air Quality Action Plan for 2021-22 which contributes to improving air quality in South Lanarkshire. - Implement Contaminated Land Strategy for South Lanarkshire - Implement projects approved within the Vacant and Derelict Land Fund framework for 2021-22 		CER – Grounds CER – Environmental Health CER – Planning and Economic Development

Prepare an Open Space Strategy in partnership with Glasgow and Clyde Valley Green Network Partnership and other council services. Strategy will contain standards on access to and quality of open spaces.	<ul style="list-style-type: none"> - Continue with the preparation of the strategy during 2021-22, which includes audits of existing open space and analysis - Establish baseline for proportion of population in South Lanarkshire that has access to good quality open space 	CER – Planning and Economic Development
Implement the Council's Biodiversity Duty Implementation Plan	<ul style="list-style-type: none"> - Actions delivered within the Biodiversity Duty Implementation Plan during 2020-21 and the impact these actions have made to improving biodiversity across the Council's estate 	CER – Countryside and Greenspace
Continue to work in partnership to deliver actions from South Lanarkshire's Biodiversity Strategy 2018-2022	<ul style="list-style-type: none"> - The Council's progress on the delivery of actions from the South Lanarkshire's Biodiversity Strategy during 2020-21 - Develop case study examples demonstrating the impact from partnership projects during 2020-21 	CER – Countryside and Greenspace
Maximise the use of our natural environment to help mitigate and adapt to the impacts of climate change	<ul style="list-style-type: none"> - Details of nature-based solution projects that contribute to mitigate or adapt to climate change during 2020-21 - Establish a South Lanarkshire canopy cover target for 2032. - Develop interactive web based urban forestry tools to explore, share and communicate, and express the increase in value (ecosystem services) potential tree planting could bring to the community in monetary terms. - Contribute and support the objectives of the Clyde Climate Forest (CCF) project. - Create and maintain a record of the Councils existing tree resource to understand the quantity, quality and the value it provides in terms of ecosystem services - such as carbon sequestration, air quality improvement or water uptake - expressed in monetary terms. Share and communicate findings in an easy-to-understand illustrative way. - Take an Asset Management Approach to trees that ensures they are considered on an equal footing with other types of infrastructure. Inform appropriate planning, management and investment decisions with a 	CER – Countryside and Greenspace

	robust understanding of both the costs and the ecosystem service values trees deliver.	
Protect, enhance and respect South Lanarkshire's natural environment	<ul style="list-style-type: none"> - Prepare a plan to inspect trees for signs of ash dieback disease - Investigate potential for increasing number of Local Nature Reserves 	CER – Countryside and Greenspace

Outcome 2: South Lanarkshire's enhanced environment provides health and wellbeing benefits to local communities

The Council will work in partnership to enable local communities to access the benefits from a healthy and quality natural environment in South Lanarkshire

Performance Measures	Baseline	Target	
Percentage of adults satisfied with parks and open spaces (results from Scottish Household Survey)	2020-21	Improve on previous year (>77.1%) (Council Target)	
Numbers participating in Get Walking Lanarkshire health walks programme.	2021-22	Contextual Measure	
Improvement Actions for 2021-22	Steps we will take to deliver our actions		Lead
In partnership with local communities, continue programme of restructuring council owned woodland and improving recreational access	<ul style="list-style-type: none"> - Consult on Management Plans for Bothwell and Blantyre Woods with community interests, David Livingstone Centre and other stakeholders by March 2022 - Continue to explore funding opportunities for phase 2 regeneration work at Greenhall and Millheugh, Blantyre including costed proposals for replacement river crossing 		CER - Facilities Waste and Ground
Contribute to community health and wellbeing through well managed and accessible outdoor and greenspace	<ul style="list-style-type: none"> - Retain Green Flag accreditation at Strathaven Park, Cambuslang Park and Castlebank Park, through implementation of agreed action plans for 2021-22 - Undertake sample case studies to determine impacts – including % of volunteers expressing positive experience/ health benefits 		CER - Facilities Waste and Ground

<p>Encourage recreational and active travel, and access to the outdoors by implementing Outdoor Access Strategy and extending Clyde Walkway</p>	<ul style="list-style-type: none"> - Delivery of repairs programme to footbridges across the core path network by March 2022 in line with available external and internal capital funding (The Core Paths Plan) (The Core Paths Plan) - Develop plan for linking The Clyde Walkway to 'Scotland's Great Trails' long-distance strategic access network 	<p>CER - Facilities Waste and Ground</p>
---	--	--

Theme: Sustainable Communities

Goal

The goal of the Sustainable Communities theme is:

‘South Lanarkshire Council’s activities, decisions and actions enable communities, businesses and individuals to live, work and enjoy South Lanarkshire in a more sustainable and environmentally friendly way, help build resilience to the impacts of climate change and a just transition to a net-zero society’.

Impact

The Council has a responsibility to help those who live, work, and visit South Lanarkshire to do so in a sustainable and environmentally friendly way; and to empower local communities to take climate action and be more environmentally responsible. The Council also has a role to play in ensuring equality in the transition to a net-zero South Lanarkshire; this includes maximising new work opportunities and the upskilling of South Lanarkshire’s workforce, reducing inequalities from the impact of climate change, promoting social justice throughout the transition to net-zero, and supporting industries, workers and communities. A more sustainable and environmentally responsible South Lanarkshire could attract more investment to the area and in turn add to sustainable economic growth.

Sustainable Development Goals

Related Sustainable Development Goals for Sustainable Communities theme



Outcomes

We will know we are making good steps towards achieving this theme’s goal when:

1. Homes and communities are energy efficient, environmentally sustainable, and fuel poverty is minimised
2. That council’s strategies, plans and policies support communities to live more sustainably, reduce carbon emissions and adapt to a changing climate
3. Local communities are supported in taking action to be more environmentally responsible

Action and performance measures

The actions during 2020-21 that contribute towards these outcomes and performance measures for each of the outcomes are listed below:

Outcome 1: Homes and communities are energy efficient, environmentally sustainable, and fuel poverty is minimized		
The Council will continue to invest in energy efficiency in council homes and work with partners to help improve energy efficiency across all tenures in South Lanarkshire and minimise fuel poverty. In the transition to a net-zero society the Council will explore options for innovative and affordable low carbon heating solutions in the local area. There will be an increased focus on sustainability for new builds and refurbishments in the domestic sector through design and construction and incorporating sustainable place-making principles in housing development programmes		
Performance Measures	Baseline	Target
Percentage of Council dwellings that are meeting the Energy Efficiency Standard for Social Housing 2 (EESH2) by 31 March 2022	2020/21	7% (Internal anticipated target)
Housing carbon emissions in tonnage for South Lanarkshire: emissions within scope of Local Authority (figures from BEIS with a 2-year lag)	2021 (2019 figures)	Contextual Measure
Percentage reduction on housing area-wide emissions compared to previous year: emissions within the scope of Local Authority (figures from BEIS with a 2-year lag)	2020 (2018 figures)	Contextual Measure
Fuel poverty percentage in South Lanarkshire	2021	Contextual Measure
Improvement Actions for 2021-22	Steps we will take to deliver our actions	Lead
Explore options for innovative and affordable low carbon energy and heating solutions in local areas that will contribute towards national climate change ambitions	- During 2021/22 consider and prepare for the development of a new Local Heat and Energy Efficiency Strategy (LHEES) in line with the Scottish Government's proposed implementation date of 2023.	HTR

Continue to improve the energy efficiency of the Council's housing stock contributing towards national climate change ambitions	- The Housing Investment Programme continues to incorporate sustainable changes to the Council's housing stock during 2021/22	HTR
Continue to maximise Home Energy Efficiency Programme funding to support owners and private rented properties	- Total amount of funding secured and delivered for 2021/22 from Energy Efficient Scotland: Area Based Schemes programme	HTR
Develop and deliver appropriate partnership actions to provide and promote energy advice and support to households resulting in warmer homes and helping to reduce fuel poverty	- Continue to work with local partners within the Fuel Poverty sub-group to reduce fuel poverty	HTR

Outcome 2: That council's strategies, plans and policies support communities to live more sustainably, reduce carbon emissions and adapt to a changing climate

The Council has a role in enabling people in South Lanarkshire to live within environmental limits through its policies, powers, actions and partnership activities. Supporting communities and businesses in the transition to a net-zero society and economy. Helping local communities build resilience against the impacts of climate change; benefit from any opportunities of a changed climate; and help to minimise the impacts of climate change widening the gap in health and social inequalities

Performance Measures	Baseline	Target
Percentage of total household waste that is recycled	2021-22	50% (Council Target)
Percentage of material accepted by the council's paper and card processor (compared to 2020/21 figure)	2020-21	Increase on 2020/21 figure (Council Target)
Percentage of household waste recycled at the council's household waste and recycling centres	2020-21	Increase on 2020/21 figure (Council Target)
Percentage of household waste sent to landfill in 2021	<25.2%	<25.2% (Council Target)
Number of properties prone to flooding in South Lanarkshire	2021-22	Contextual Measure
Percentage of adults travelling to work by active or public transport (Scottish Household Survey)	2021-22	Contextual Measure

Percentage mode share of children travelling to school by active or public transport (annual national 'Hands Up' survey)	2021-22	Contextual Measure
Number of charging infrastructure points available to the public within South Lanarkshire	2021-22	Contextual Measure
Carbon emissions tonnage for transport emissions in South Lanarkshire: emissions within scope of Local Authority (figures from BEIS with a 2-year lag)	2021 (2019 figures)	Contextual Measure
Percentage reduction in carbon emissions from transport compared to previous year: emissions within scope of Local Authority (figures from BEIS with a 2-year lag)	2020 (2018 figures)	Contextual Measure
Carbon emission tonnage for industry in South Lanarkshire: emissions within scope of Local Authority (figures from BEIS with a 2-year lag)	2021 (2019 figures)	Contextual Measure
Percentage reduction in carbon emissions from industry in South Lanarkshire compared to previous year: emissions within scope of Local Authority (figures from BEIS with a 2-year lag)	2020 (2018 figures)	Contextual Measure
Improvement Actions for 2021-22	Steps we will take to deliver our actions	Lead
Undertake participation rate study to establish the % of householders using the council's food waste collection service	<ul style="list-style-type: none"> - Share of household using food caddy to dispose food waste to inform Council initiatives in relation to food waste in the following years of implementation of the strategy (subject to Covid restrictions lifted) 	CER – Facilities, waste and grounds
Participation in the Green Heat in Greenspace project being run by Greenspace Scotland	<ul style="list-style-type: none"> - Identify potential opportunities for sources of sustainable heat in South Lanarkshire's greenspace 	CER - Support
Manage flooding priorities and deliver prioritised flood protection schemes	<ul style="list-style-type: none"> - Progress / deliver prioritised flood protection projects / studies in line with available capital and revenue funding 	CER - Roads and Transportation
Encourage greater use of public transport by working with partners to improve public transport infrastructure	<ul style="list-style-type: none"> - Progress / deliver prioritised improvements to bus and rail infrastructure (e.g. park and ride) in line with agreed Park and Ride Strategy (2018-2027) and available external funding 	CER - Roads and Transportation

Encourage active travel by extending our network of cycle routes	<ul style="list-style-type: none"> - Progress / deliver walking and cycling projects / schemes in line with agreed 2021-22 capital programme - Complete the four Spaces for People projects in line with available funding, taking cognisance of Covid-19 restrictions / developments and government guidance 	CER - Roads and Transportation
Develop a sustainable food system to overcome social, health, economic and environmental issues related to food	<ul style="list-style-type: none"> - Implement year two of the Good Food Strategy (2020-2025) Action Plan and monitor its impacts. particularly in relation to food insecurity and poverty as a result of Covid-19 	CER - Support
Develop supporting planning guidance in support of the Local Development Plan and the Sustainable Development and Climate Change Strategy action plan to ensure new buildings are designed to be as carbon neutral as possible and resilient to climate change and to encourage the retro fitting of appropriate technology in existing buildings	<ul style="list-style-type: none"> - Supporting Planning Guidance to be developed and presented to committee for approval by March 2022 and thereafter be subject to public consultation - Awareness sessions to be developed for planning officers and developers/agents to ensure roll out in 2022-23 	CER – Planning and Building Standards
Review and update guidance for building standards surveyors in relation to climate change mitigation in new buildings and the adaptation of existing buildings	<ul style="list-style-type: none"> - Monitor effectiveness of actions implemented in March 2021 and consider further service specific actions by March 2022 	CER – Planning and Building Standards
Provide advice and support to businesses in the transition to a net-zero economy	<ul style="list-style-type: none"> - Develop an Economic ‘Response, Recovery and Renewal’ Strategy framed around three themes: People, Place and Business, whilst creating the right conditions for a low carbon economy for Committee approval by June 2021 - Support provided to Smart Sustainable East Kilbride (SSEK) in the delivery of their action plan priorities for 2021-22 (subject to approval of Council and other funding partners) - Work with partners and local businesses in the approved Low Carbon Challenge Fund project to identify the challenges and opportunities in the repurposing of assets in the key sectors of renewables, aerospace and rail 	

Outcome 3: Local communities are supported in taking action to be more environmentally responsible

The Council will support local communities to enable and empower local action on climate change, sustainability, and the local environment. This would include volunteering opportunities, training and guidance, support for young people through programmes like eco-schools and STEM, working in partnership to help upskill people for employment opportunities in the just transition to a low carbon economy.

Performance Measures	Baseline	Target	
Percentage of schools actively engaged with the eco-schools programme	2019-20	Maintain or increase from previous year	
Number of volunteer days from the Environmental Volunteering programme across South Lanarkshire during 2020-21	2020-21	1,000	
Improvement Actions for 2021-22	Steps we will take to deliver our actions		Lead
Work towards the introduction of Part 9 of the Community Empowerment Act 2015 in relation to food growing	<ul style="list-style-type: none"> - Implement year 2 Food Growing Strategy's action plan to continue to increase all types of food growing provision across South Lanarkshire 		CER - Facilities Waste and Ground
As part of a longer-term plan to enhance the school curriculum, formulate a process to coherently capture aspects of sustainability and climate change in the school curriculum and continue to engage young people in environmental education through Eco Schools or other initiatives	<ul style="list-style-type: none"> - Identification and collation of sustainability and climate change activity within the school curriculum during 2021/22 as a single source of information - Establish a baseline with a carbon footprint calculator for all establishments and set a carbon reduction target for each establishment - Work with CQIS to further imbed sustainability within the curriculum and create a pupil voice forum to inform decision making on sustainability Council wide. 		Education Resources
Work in partnership to provide the appropriate skills required for employment opportunities in the low carbon and renewable energy industry	<ul style="list-style-type: none"> - Promotion and tracking of initiatives/events to promote participation in STEM 		Education Resources