



Connect Priority: Improve health, care and wellbeing

Note: some 2021-22 results were impacted due to the Covid-19 crisis

Housing suitable for older people

Total number of amenity houses in our stock

**Target – upgrade all available
suitable properties**

2020-21

820



2021-22

938



Target met ✓ Performance improving ✓

Energy Efficiency Standard for Social Housing (EESH)

% of council dwellings meeting the Energy
Efficiency Standard for Social Housing

Target 93.4%

2020-21

93.9%

2021-22

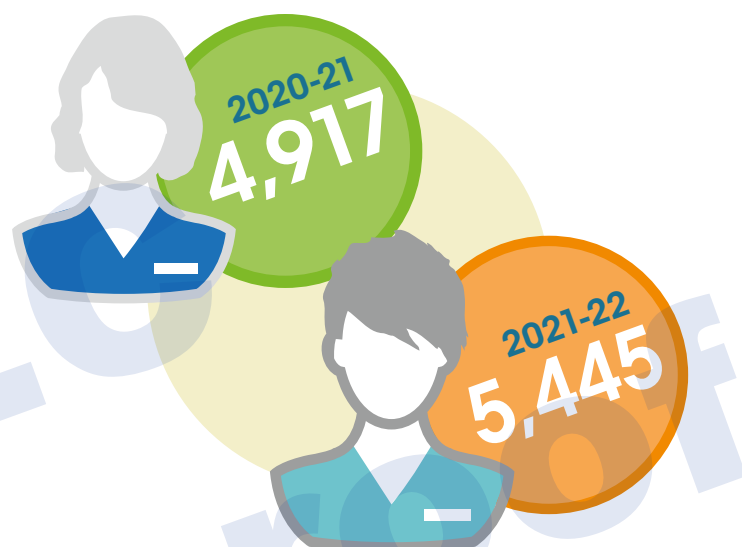
98.6%



Target met ✓ Performance improving ✓

Carers accessing support

Target – increase by 10%



Target met ✓ Performance improving ✓

Local authority and private Welfare guardianship visits:

Target – 90%

% Completed on time

2020-21

2021-22



Target met ✓ Performance improving ✓

www.southlanarkshire.gov.uk/connect

If you need this information in another language or format, please contact us to discuss how we can best meet your needs.

Phone: **0303 123 1015** Email: equalities@southlanarkshire.gov.uk

Produced for Finance and Corporate Resources by Communications and Strategy. 063234/Jun22



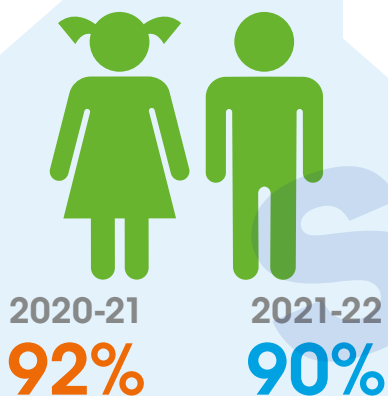
Connect Priority:

Getting it right for children and young people

Note: some 2021-22 results were impacted due to the Covid-19 crisis

Children being looked after in a community setting

Target – more than 90%



Target met ✓ Performance improving ✗

School leavers achieving 5 or more awards at Level 5

Target – improve on previous year

2020-21
68.8%

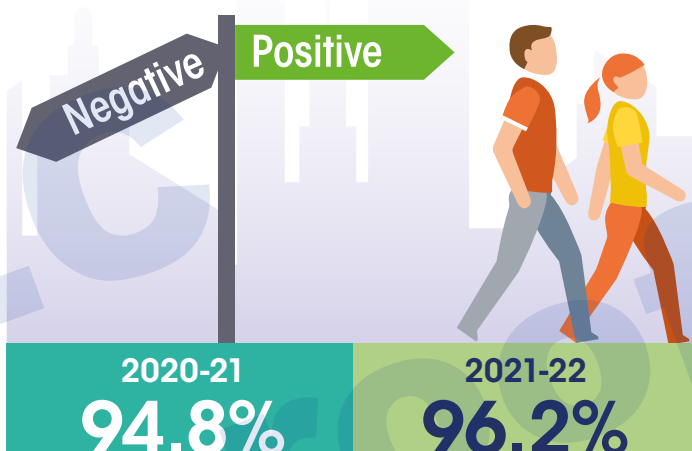
2021-22
72.6%



Target met ✓ Performance improving ✓

Pupils entering positive destinations

Target – 95.6%



Target met ✓ Performance improving ✓

Children and young people in Early Learning and Childcare

Target – increase numbers by adding 2 establishments and a nursery class

2020-21
7,792

2021-22
8,026



Target met ✓ Performance improving ✓

www.southlanarkshire.gov.uk/connect

If you need this information in another language or format, please contact us to discuss how we can best meet your needs.

Phone: 0303 123 1015 Email: equalities@southlanarkshire.gov.uk

Produced for Finance and Corporate Resources by Communications and Strategy. 063234/Jun22



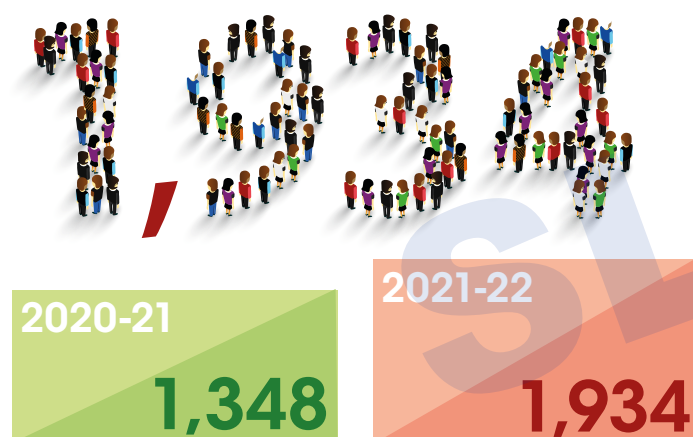
Connect Priority:

Promote sustainable and inclusive economic growth and tackle disadvantage

Note: some 2021-22 results were impacted due to the Covid-19 crisis

Unemployed people supported via council operated employability programmes

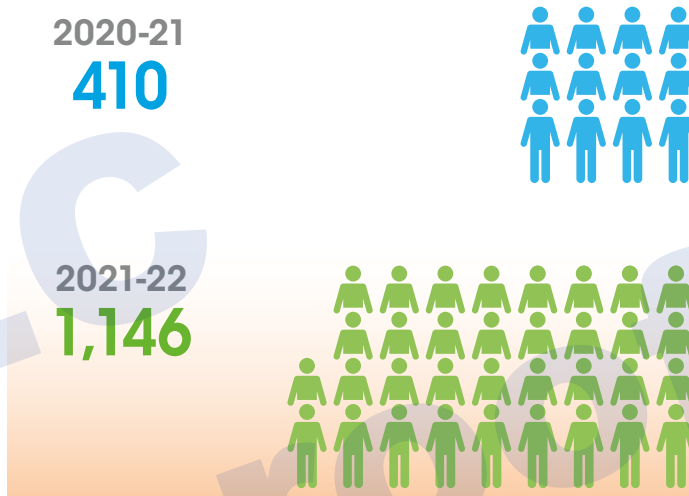
Target – 1,000



Target met ✓ Performance improving ✓

Unemployed people gaining sustainable employment

Target – 400



Target met ✓ Performance improving ✓

Business support interventions by Economic Development (grants, loans or advice)

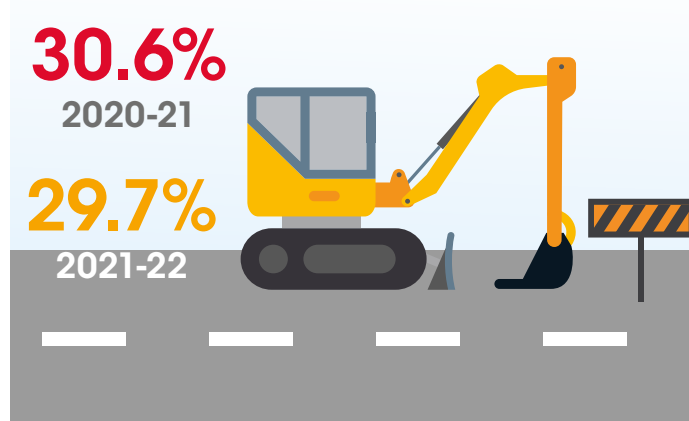
Target – 1,500



Target met ✓ Performance improving ✗

Percentage of our road network that should be considered for maintenance treatment (Road Condition Index)

Target – less than 30.6%



Target met ✓ Performance improving ✓

www.southlanarkshire.gov.uk/connect

If you need this information in another language or format, please contact us to discuss how we can best meet your needs.

Phone: 0303 123 1015 Email: equalities@southlanarkshire.gov.uk

Produced for Finance and Corporate Resources by Communications and Strategy. 063234/Jun22



ConnectPriority:

Ensure communities are safe, strong and sustainable

Note: some 2021-22 results were impacted due to the Covid-19 crisis

Percentage of household waste sent to landfill

Target – less than 15%

2020
9.71%

2021
8.66%



Target met ✓ Performance improving ✓

Additional affordable homes delivered

Target – provide 1,000 homes by end of 2022

2020-21

197

2021-22

415



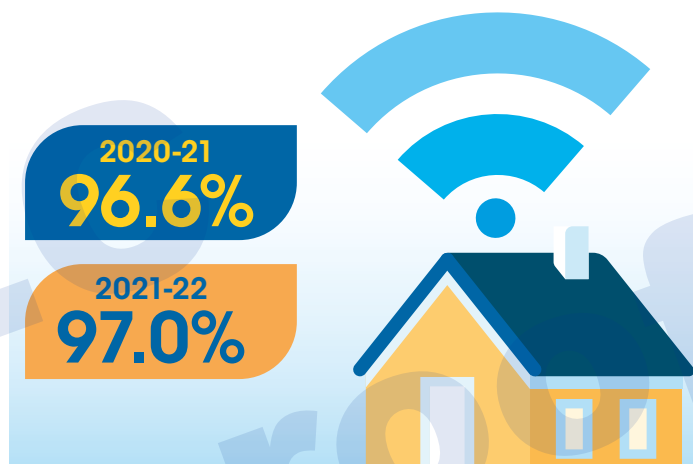
Target met: on track Performance improving ✓

Percentage of properties with Superfast Broadband more than 30Mbps

Target – more than 96.6%

2020-21
96.6%

2021-22
97.0%



Target met ✓ Performance improving ✓

Housing repairs completed right first time



2020-21
99%

2021-22
99%

Target
90%

Target met ✓ Performance maintained ↔

www.southlanarkshire.gov.uk/connect

If you need this information in another language or format, please contact us to discuss how we can best meet your needs.

Phone: **0303 123 1015** Email: equalities@southlanarkshire.gov.uk

Produced for Finance and Corporate Resources by Communications and Strategy. 063234/Jun22



Covid response

Wellbeing and assistance

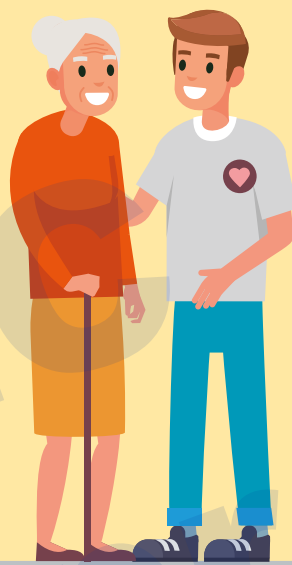
52,822

calls to/from the Community Wellbeing Helpline in 2021-22



1,750

community responses to the request for assistance



291,984

meals distributed directly to individuals and families or to food organisations in communities



1,880

food packs supplied directly to vulnerable groups

565

households referred to local foodbanks





Covid response

Businesses helped and grants issued

4,256 payments

to taxi driver/operators under the 2021-22 scheme, totalling **£4.779 million**



51,014



Free School Meals Payments
(School Holiday and Self-Isolation) totalling **£1.590 million**

28,549

Scottish Child Payments
to low income households totalling **£4.278 million**



11,307

Crisis and Community Care Grants
from the Scottish Welfare Fund totalling **£3.342 million**



9,622

Self-Isolation Support Grants (SISG) payments
of £500 totalling **£4.811 million**



34,141

Low Income Pandemic Payments of £130
to low income households totalling **£4.438 million**



www.southlanarkshire.gov.uk/connect

If you need this information in another language or format, please contact us to discuss how we can best meet your needs.

Phone: **0303 123 1015** Email: equalities@southlanarkshire.gov.uk

Produced for Finance and Corporate Resources by Communications and Strategy. 063234/Jun22



Covid response

Businesses helped and grants issued



Assisted 232 businesses with
Scottish Government funded
discretionary grants of
£2.7 million

108 business grants made
under the Covid-19 Table
Service Fund totalling

£290,000



17 grants made
under the Covid-19
Ventilation Fund
totalling

£22,185



351 business grants made
under the Covid-19
December/January Hospitality
Fund totalling **£2,178,900**

72 business grants made under
the Covid-19 Hospitality and
Leisure Fund totalling **£160,650**



3 grants made under the
Covid-19 Nightclub Closure
Fund totalling

£135,000

www.southlanarkshire.gov.uk/connect

If you need this information in another language or format, please contact us to discuss how we can best meet your needs.

Phone: **0303 123 1015** Email: equalities@southlanarkshire.gov.uk

Produced for Finance and Corporate Resources by Communications and Strategy. 063234/Jun22



Covid response

Support for Education

Over

5,800 Chromebook devices

were purchased by the council and distributed to pupils to support their learning and keep them connected during lockdown



Over

570

mobile wifi (Mifi) devices

were also distributed to families who had little or no internet access



More than

1,100

pre-loved items were donated to the 2021 winter clothing campaign led by Education



14

Sensational Summer Sessions clubs

were successfully delivered by the council during the summer holidays, nearly **800 children** attended including 151 with additional support needs



www.southlanarkshire.gov.uk/connect

If you need this information in another language or format, please contact us to discuss how we can best meet your needs.

Phone: **0303 123 1015** Email: equalities@southlanarkshire.gov.uk

Produced for Finance and Corporate Resources by Communications and Strategy. 063234/Jun22