



Connect Objective:

Improve later life

Assistance equipment supplied

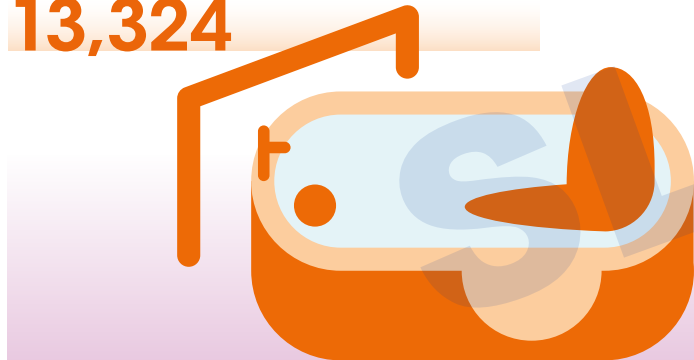
(items such as: grab and bed rails, bath lifts, shower stools)

2018-19

14,199

2019-20

13,324



Demand led – all requests completed

Housing suitable for older people

Total number of amenity houses in our stock

2018-19

654



2019-20

776



Performance improving ✓

Care Inspectorate

inspections of registered care homes evaluated as 'good/very good'

2018-19

78%

2019-20

78%



Performance maintained ↔

Disability equipment recycled (Equipu)

2018-19

2,530 items

saving

£185,640

2019-20

2,450 items

saving

£283,041



Performance improving ✓

www.southlanarkshire.gov.uk/connect

If you need this information in another language or format, please contact us to discuss how we can best meet your needs.
Phone: 0303 123 1015 Email: equalities@southlanarkshire.gov.uk

Produced for Finance and Corporate Resources by Communications and Strategy.060248/Aug20

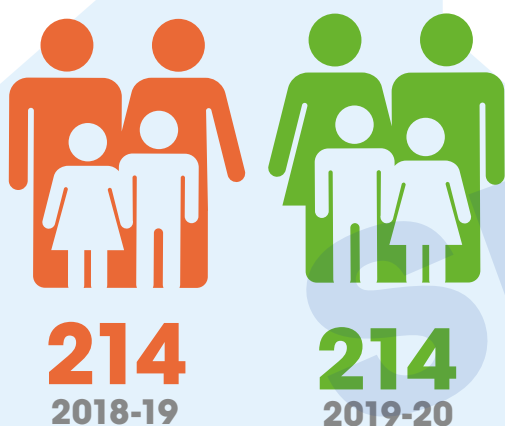


Connect Objective:

Protect vulnerable children, young people and adults

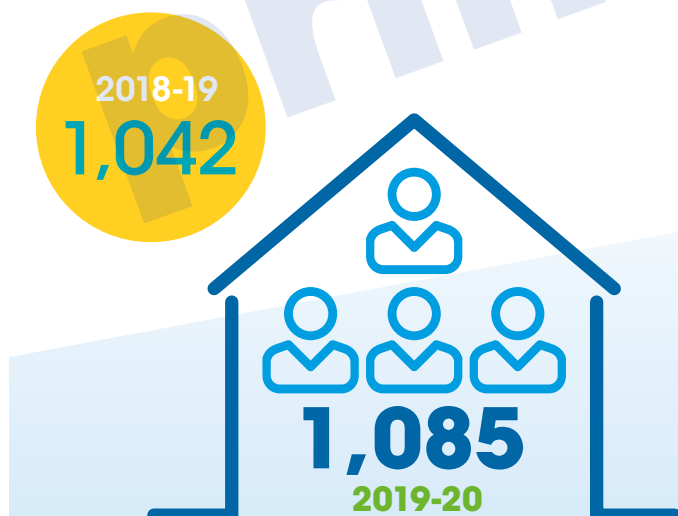
Note: some 2019-20 results were impacted as a result of the Covid-19 crisis

Children supported in foster care



Performance maintained ↔

People with learning difficulties supported to live in their own communities

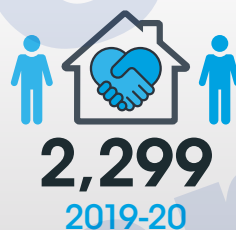


Performance improving ✓

Local authority and private Welfare guardianship visits:

Target 90%

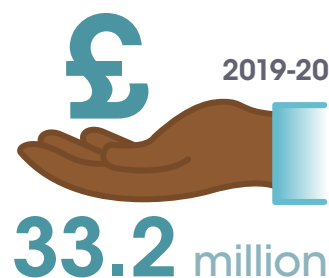
Number of visits % Completed on time



Target met ✗ Performance improving ✗

Money Matters Advice Service

Total benefits claimed for South Lanarkshire residents



Active client cases



Performance improving ✓

www.southlanarkshire.gov.uk/connect

If you need this information in another language or format, please contact us to discuss how we can best meet your needs.
Phone: 0303 123 1015 Email: equalities@southlanarkshire.gov.uk

Produced for Finance and Corporate Resources by Communications and Strategy.060248/Aug20



Connect Objective:

Deliver better health and social care outcomes for all

Note: some 2019-20 results were impacted as a result of the Covid-19 crisis

Supporting people to live independently

2018-19

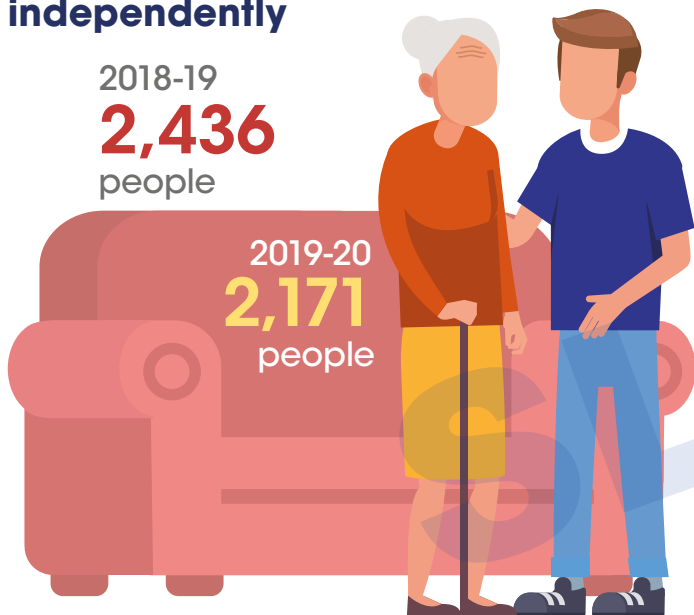
2,436

people

2019-20

2,171

people



Performance improving **✗**

Delayed discharge (days)

2018-19

33,128

2019-20

39,362



Performance improving **✗**

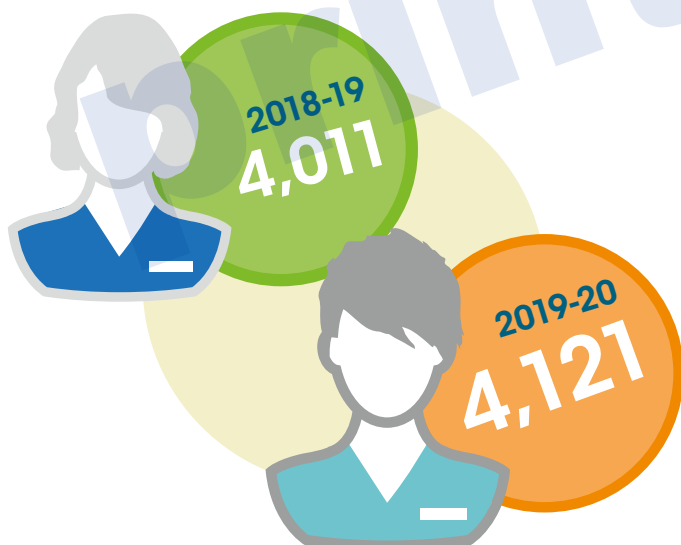
Supporting carers

2018-19

4,011

2019-20

4,121



Performance improving **✓**

Short breaks and respite for children

2018-19

150



2019-20

161



Performance improving **✓**

www.southlanarkshire.gov.uk/connect

If you need this information in another language or format, please contact us to discuss how we can best meet your needs.

Phone: 0303 123 1015 Email: equalities@southlanarkshire.gov.uk

Produced for Finance and Corporate Resources by Communications and Strategy.060248/Aug20



Connect Objective:

Improve the availability, quality and access to housing

Additional affordable homes delivered

Target - As per the Strategic Housing Investment Plan

2018-19

132



2019-20

95



Target met ✓

Lets given to homeless households

Target 50%



49.2%



52.4%

Target met ✓ Performance improving ✓

Housing repairs completed first time



2018-19

99%

2019-20

99%

Target

90%

Target met ✓ Performance maintained ↔

Tenancies sustained for more than a year

Target 90%

2018-19

89.4%



2019-20

90.8%

Target met ✓ Performance improving ✓

www.southlanarkshire.gov.uk/connect

If you need this information in another language or format, please contact us to discuss how we can best meet your needs.
Phone: 0303 123 1015 Email: equalities@southlanarkshire.gov.uk

Produced for Finance and Corporate Resources by Communications and Strategy.060248/Aug20



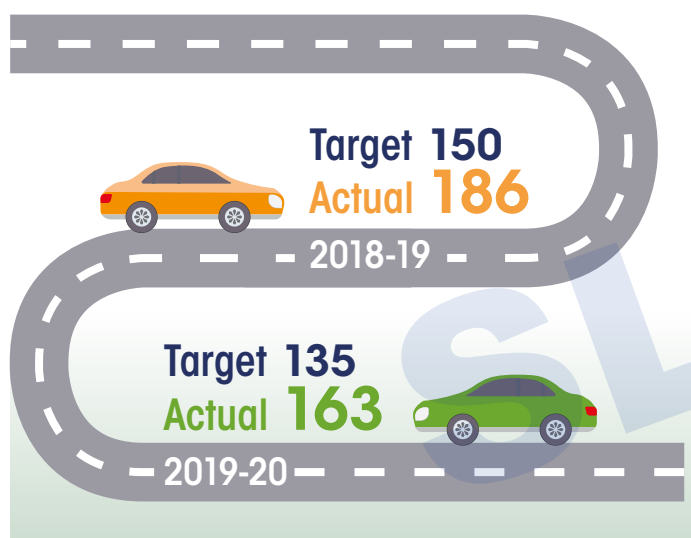
Connect Objective:

Improve the road network, influence improvements in public transport and encourage active travel

Note: some 2019-20 results were impacted as a result of the Covid-19 crisis

Roads Investment Programme

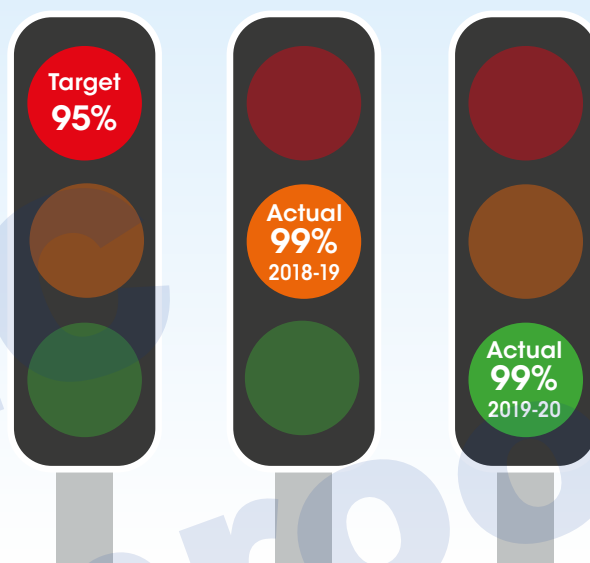
Carriageway improvement projects undertaken



Target met ✓ Performance maintained ↔

Traffic signal repairs

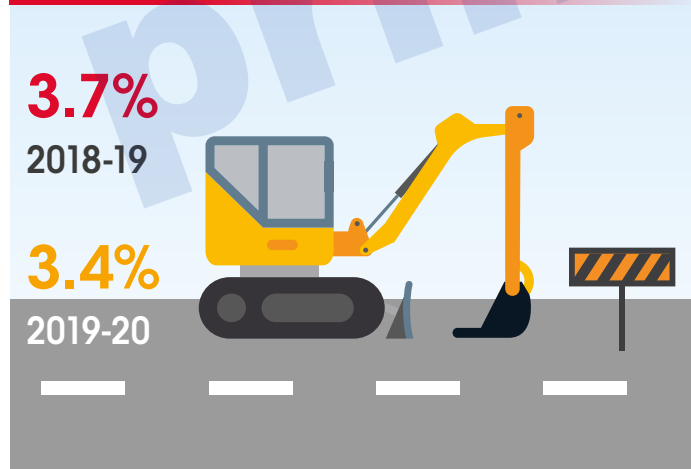
Completed within 48 hours



Target met ✓ Performance maintained ↔

Percentage of the road network resurfaced

Target 3.5%



Target met ✗ Performance improving ✗

Number of footway improvement projects

2018-19 Target 25

Actual

25

2019-20 Target 12

Actual

14

Target met ✓

www.southlanarkshire.gov.uk/connect

If you need this information in another language or format, please contact us to discuss how we can best meet your needs.

Phone: 0303 123 1015 Email: equalities@southlanarkshire.gov.uk

Produced for Finance and Corporate Resources by Communications and Strategy.060248/Aug20



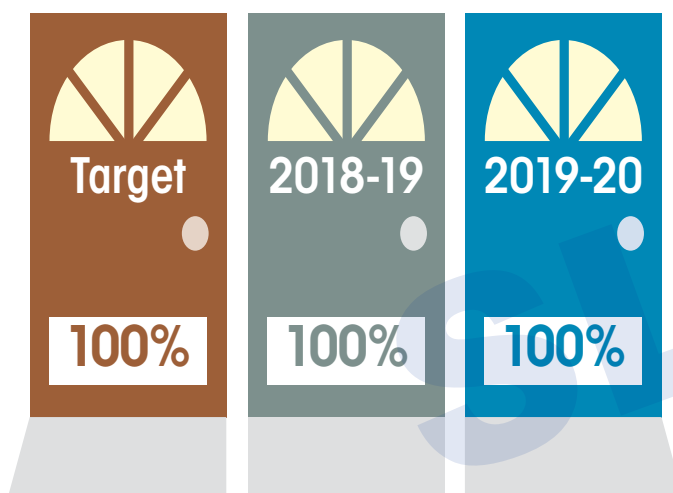
Connect Objective:

Work with communities and partners to promote high quality, thriving and sustainable communities

Note: some 2019-20 results were impacted as a result of the Covid-19 crisis

Doorstep crime

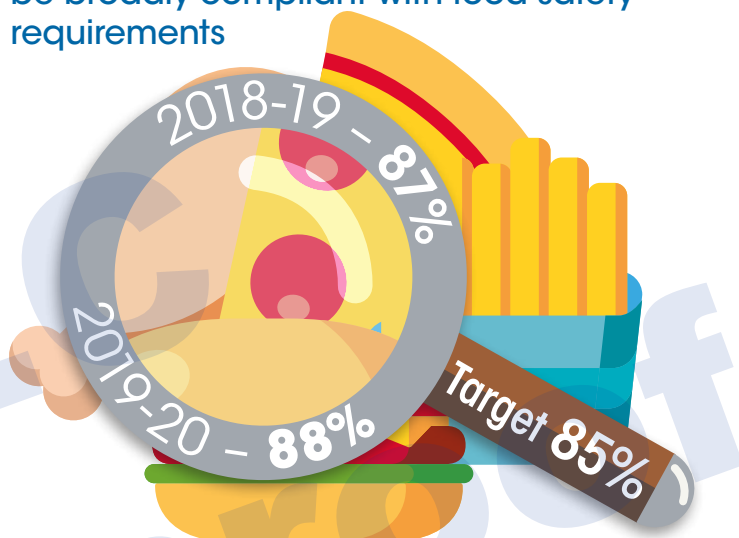
Reports responded to on the same or next working day



Target met ✓ Performance maintained ↔

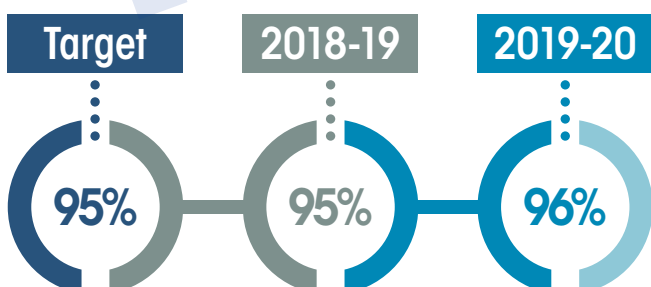
Food safety

Food businesses inspected and found to be broadly compliant with food safety requirements



Target met ✓ Performance improving ✓

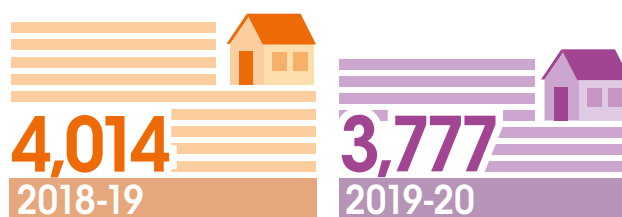
Street cleanliness standard:



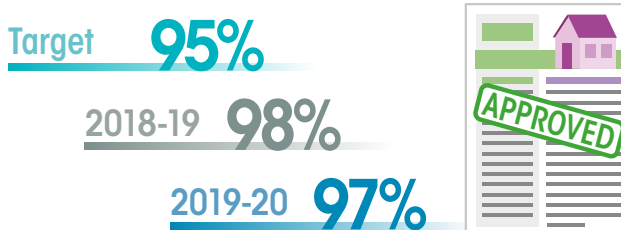
Target met ✓ Performance improving ✓

Planning and building warrant

Applications processed



Planning applications granted approval



Target met ✓ Performance improving ✗

www.southlanarkshire.gov.uk/connect

If you need this information in another language or format, please contact us to discuss how we can best meet your needs.
Phone: 0303 123 1015 Email: equalities@southlanarkshire.gov.uk

Produced for Finance and Corporate Resources by Communications and Strategy.060248/Aug20



Connect Objective:

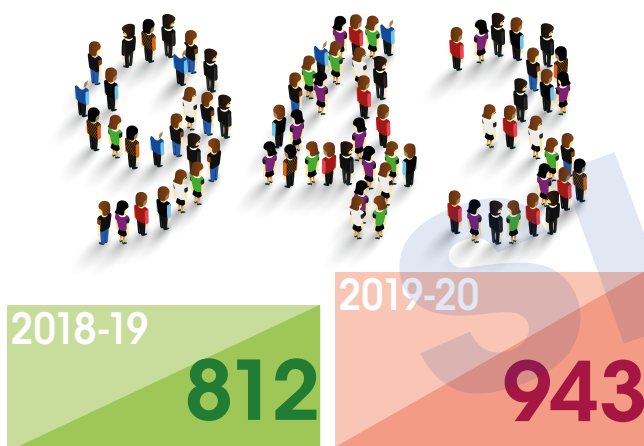
Support the local economy by providing the right conditions for inclusive growth

Note: some 2019-20 results were impacted as a result of the Covid-19 crisis

Business support

Jobs created/sustained as a result of our support

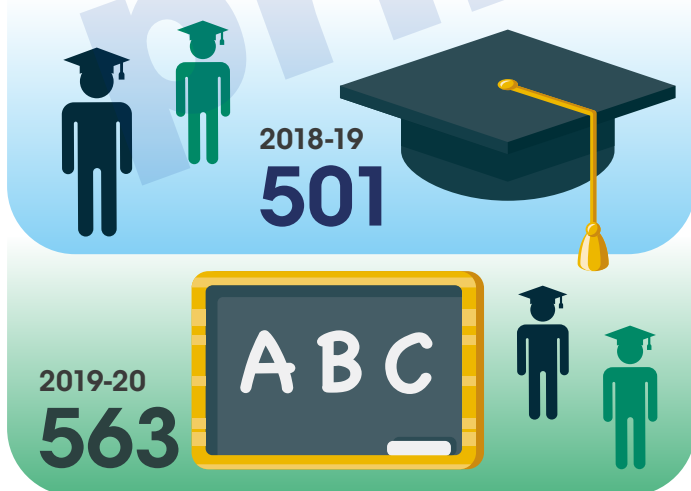
Target – 500



Target met ✓ Performance improving ✓

Unemployed people supported to access further education/training

Target – 200



Target met ✓ Performance improving ✓

Increase in sales

generated by businesses as a result of council intervention

Target – £10 million



Target met ✓ Performance improving ✗

Voluntary organisations

supported through Community Asset Transfer process

2019-20

Target

20

Actual

27

Target met ✓

www.southlanarkshire.gov.uk/connect

If you need this information in another language or format, please contact us to discuss how we can best meet your needs.
Phone: 0303 123 1015 Email: equalities@southlanarkshire.gov.uk

Produced for Finance and Corporate Resources by Communications and Strategy.060248/Aug20



Connect Objective:

Support our communities by tackling disadvantage and deprivation and supporting aspiration

Proportion of people earning less than the living wage



Performance improving ✓

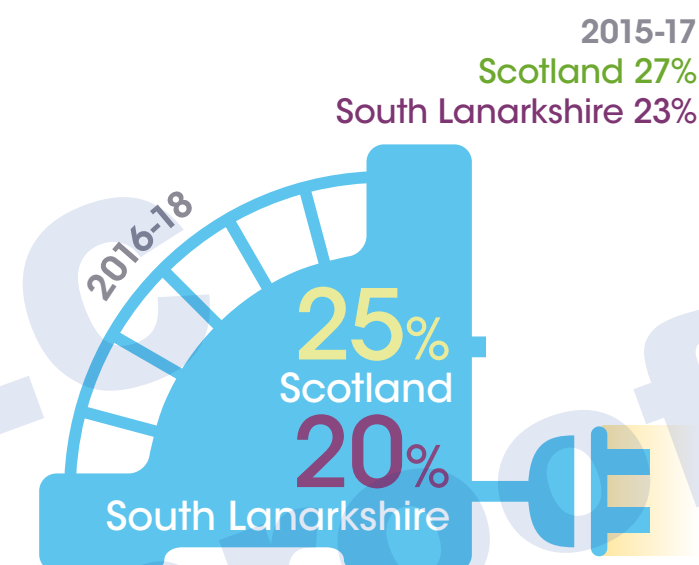
Percentage of households with home access to the internet



Performance improving ✓

Fuel poverty

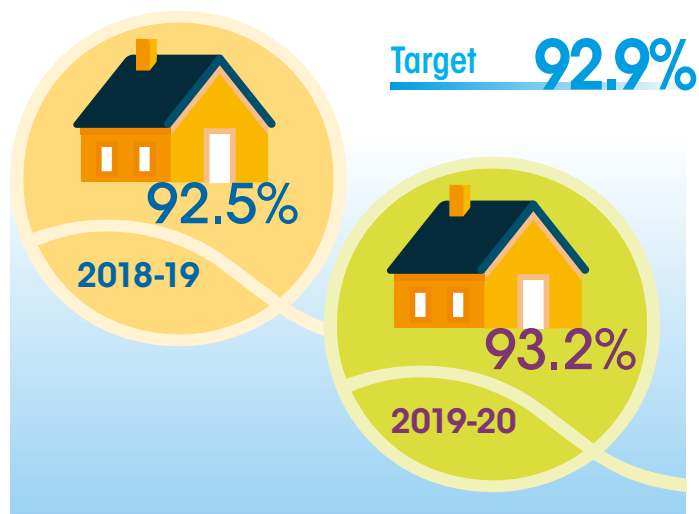
% of households in fuel poverty



Performance improving ✓

Scottish Housing Quality Standard

% of council dwellings meeting the Scottish Housing Quality Standard



Target met ✓ Performance improving ✓

www.southlanarkshire.gov.uk/connect

If you need this information in another language or format, please contact us to discuss how we can best meet your needs.
Phone: 0303 123 1015 Email: equalities@southlanarkshire.gov.uk

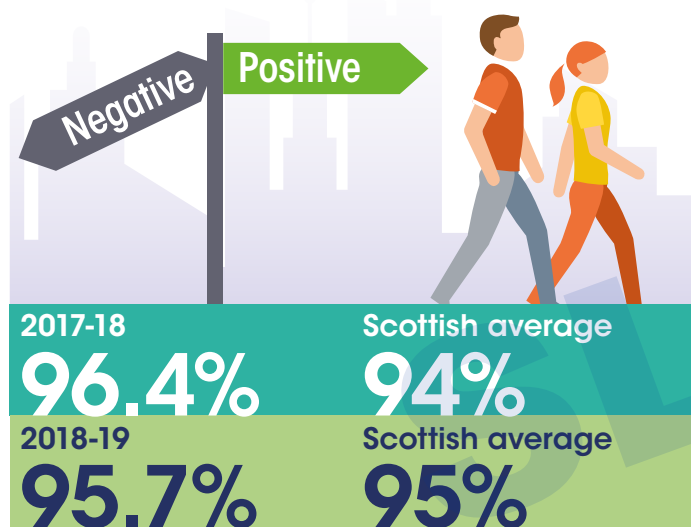
Produced for Finance and Corporate Resources by Communications and Strategy.060248/Aug20



Connect Objective:

Improve achievement, raise educational attainment and support lifelong learning

School leavers entering positive destinations



Performance better than the Scottish average ✓

Performance improving ✗

Curriculum for Excellence

percentage of secondary school pupils achieving Level 3 or better



Literacy

Target	90.1%
2018-19	93.2%
2019-20	93.2%



Numeracy

Target	89.0%
2018-19	91.2%
2019-20	93.0%

Target met ✓ Performance improving ✓



John Muir Award



ASDAN Youth Achievement Award

ASDAN PSD Award

Level 1 Customer Services Award

HSK level 1 Awards



Youth Scotland Hi5 Award

Attainment

Over the last 5 years attainment has increased for our young people leaving school.

2014-15 **86.4%** 2019-20 **87.1%**

learners achieved 5 or more National 4 level qualifications



2014-15 **60.5%** 2019-20 **63.8%**

learners achieved 5 or more National 5 level qualifications



2014-15 **33.2%** 2019-20 **36.7%**

learners achieved 5 or more Higher level qualifications



Performance improving ✓

www.southlanarkshire.gov.uk/connect

If you need this information in another language or format, please contact us to discuss how we can best meet your needs.
Phone: 0303 123 1015 Email: equalities@southlanarkshire.gov.uk

Produced for Finance and Corporate Resources by Communications and Strategy/060248/Aug20



Connect Objective:

Ensure schools and other places of learning are inspirational

Note: some 2019-20 results were impacted as a result of the Covid-19 crisis

Schools modernisation

2018-19 **123** new primary schools covering **99%** of primary aged children

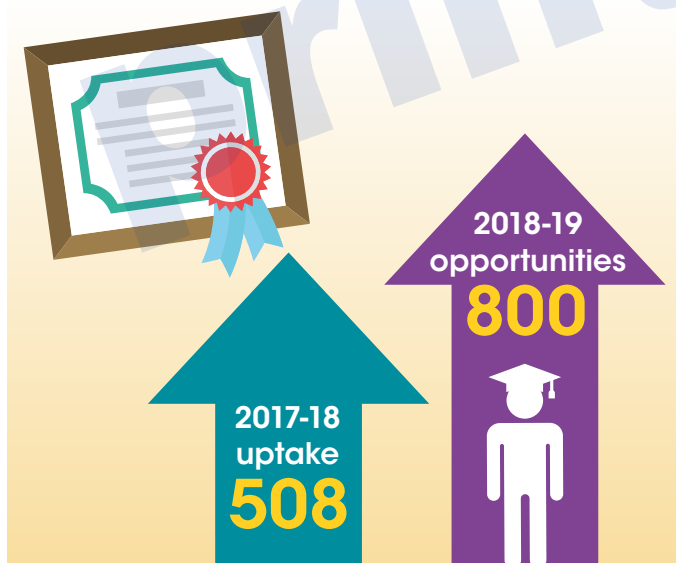
2019-20 **128** new primary and additional support needs primary schools covering



Target met ✓

GradU8

vocational learning experience



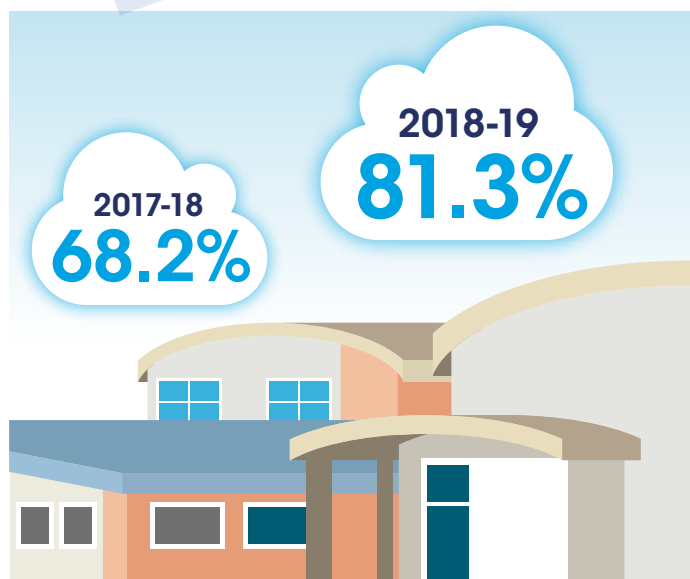
Performance improving ✓

Youth Family and Community Learning celebrations

2018-19 **14** events involving **1,095** learners

2019-20 **19** events involving **597** learners

Primary school external inspections evaluated as 'good or better'



Performance improving ✓

www.southlanarkshire.gov.uk/connect

If you need this information in another language or format, please contact us to discuss how we can best meet your needs.
Phone: 0303 123 1015 Email: equalities@southlanarkshire.gov.uk

Produced for Finance and Corporate Resources by Communications and Strategy.060248/Aug20



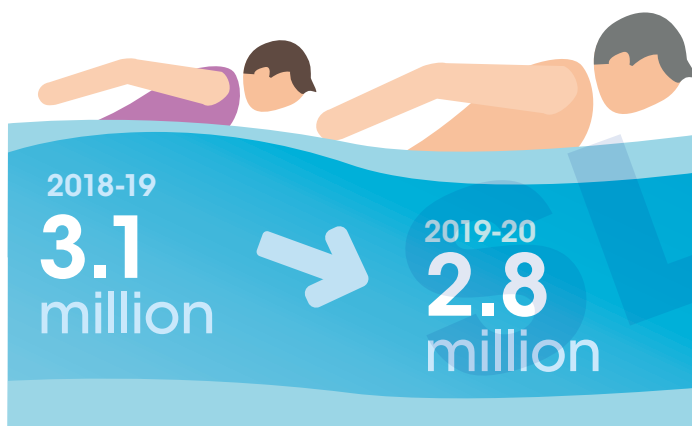
Connect Objective:

Encourage participation in physical and cultural activities

Note: 2019-20 attendance rates were impacted as a result of the closure of all SLLC facilities on 18 March 2020 due to Covid-19

Attendances at swimming pools and indoor sports and leisure facilities

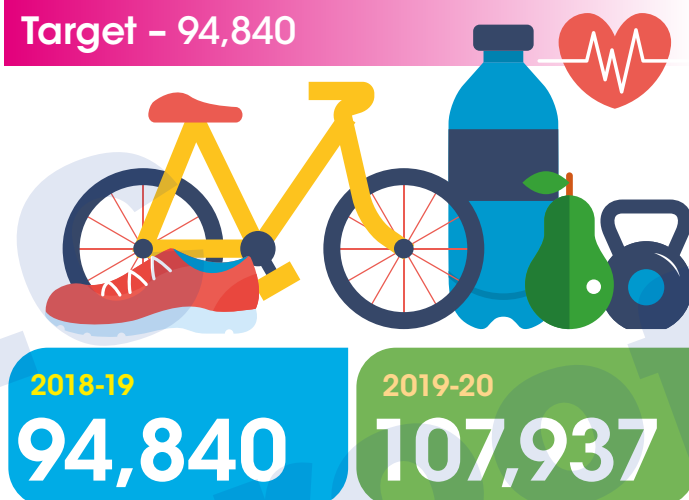
Target – 3 million



Target met **✗** Performance improving **✗**

Attendances by residents assessing SLLC health specific intervention programmes

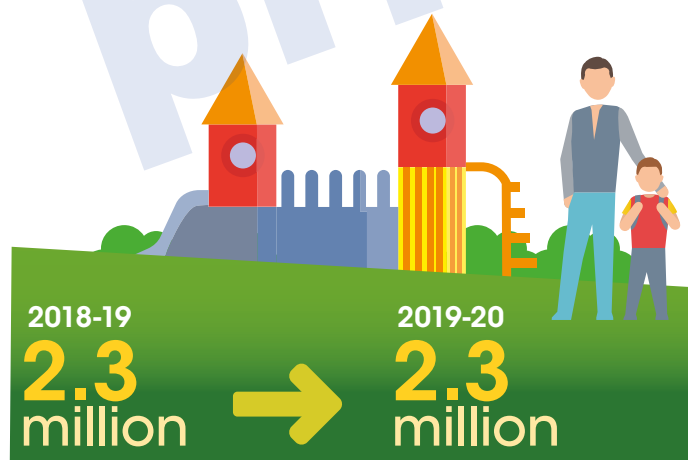
Target – 94,840



Target met **✓** Performance improving **✓**

Attendances at outdoor recreation and country parks

Target – 2.3 million



Target met **✓** Performance maintained **↔**

Attendances at cultural services and facilities, libraries and museums

Target – 3.4 million



Target met **✓** Performance improving **✓**

www.southlanarkshire.gov.uk/connect

If you need this information in another language or format, please contact us to discuss how we can best meet your needs.
Phone: 0303 123 1015 Email: equalities@southlanarkshire.gov.uk

Produced for Finance and Corporate Resources by Communications and Strategy.060248/Aug20



Theme:

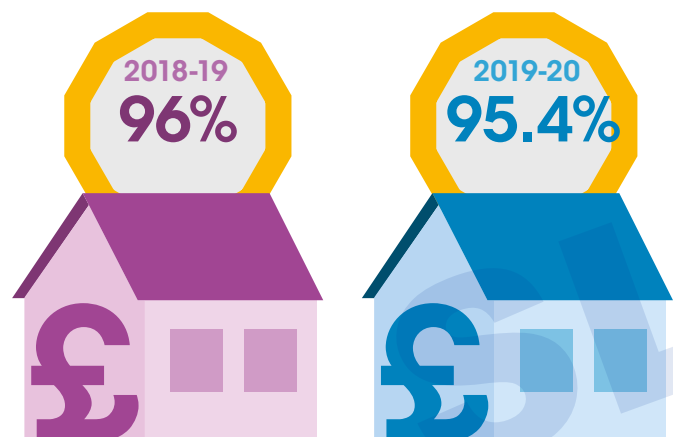
Delivering the Plan and Achieving Best Value

Note: some 2019-20 results were impacted as a result of the Covid-19 crisis

Council Tax income recovered

Target – 96%

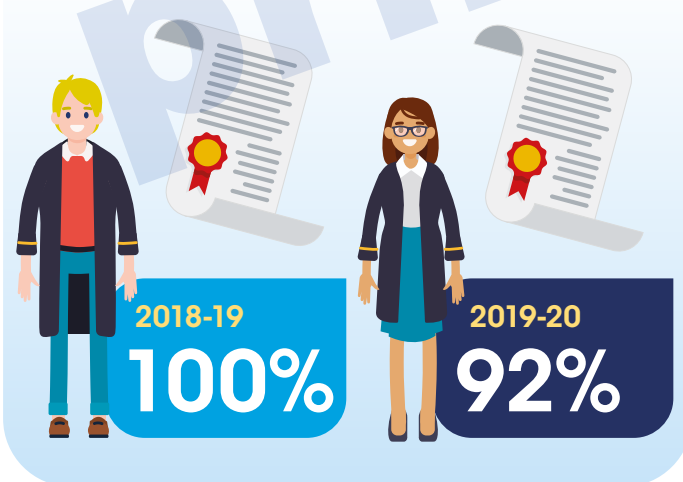
Target – 95.8%



Target met **✗** Performance improving **✗**

Modern apprentices achieving certification

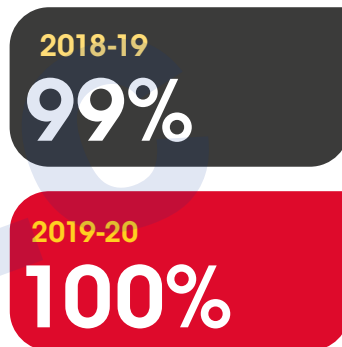
Target – more than 90%



Target met **✓** Performance improving **✗**

Citizenship applications processed

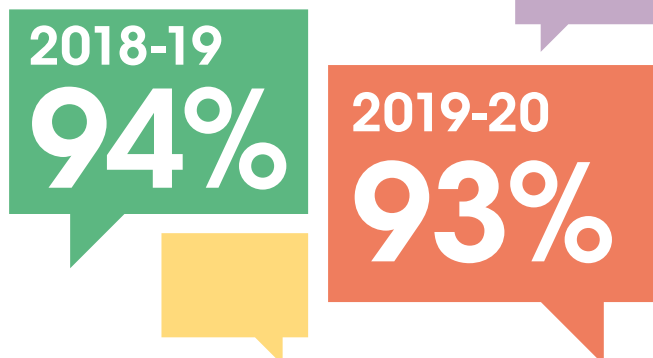
Target – 99% applications acknowledged within 2 days



Target met **✓** Performance improving **✓**

Freedom of information requests

Target – 96% processed within 20 working days



Target met **✗** Performance improving **✗**

www.southlanarkshire.gov.uk/connect

If you need this information in another language or format, please contact us to discuss how we can best meet your needs.
Phone: 0303 123 1015 Email: equalities@southlanarkshire.gov.uk

Produced for Finance and Corporate Resources by Communications and Strategy.060248/Aug20