

# Report

Report to:	<b>Climate Change and Sustainability Committee</b>
Date of Meeting:	<b>17 September 2020</b>
Report by:	<b>Executive Director (Community and Enterprise Resources)</b>

Subject:	<b>Sustainable Development and Climate Change Strategy Action Plan 2020-21</b>
----------	--

## 1. Purpose of Report

1.1. The purpose of the report is to:-

- ◆ Seek approval for Sustainable Development and Climate Change Strategy Action Plan for 2020-21.

## 2. Recommendation(s)

2.1. The Committee is asked to approve the following recommendation(s):-

- 1) That the 2020-21 action plan for the sustainable development and climate change strategy 2017-2022, be approved.
- 2) that it be noted that the progress of the action plan will be reported to the Climate Change and Sustainability Committee at Q2 and Q4.

## 3. Background

3.1 The Council's Sustainable Development and Climate Change Strategy (SDCCS) was approved on 6 December 2017 and covers a five-year period from 2017 to 2022. The strategy sets out outcomes and actions organised around three sustainable development themes:

- ◆ Sustainable Council
- ◆ Sustainable Environment
- ◆ Sustainable Communities

3.2 Delivery of actions within the strategy provides the main focus for our sustainable development activity and also enables the Council to fulfil its duties under the Local Government (Scotland) Act 2003, the Climate Change (Scotland) Act 2009 and the Council's contribution to the UN's Sustainable Development Goals.

3.3 The strategy action plan sets out specific actions to be undertaken to deliver objectives under each theme. The action plan is monitored using IMPROVe and the previous reporting arrangement was to report progress on the action plan to the Executive Committee following Q2 and Q4. It is proposed that progress on the action plan will now be reported to the Climate Change and Sustainability Committee at Q2 and Q4.

#### **4. Action Plan 2020-21**

4.1 The actions have been agreed with relevant Services across the Council and have been developed using the sustainable development and climate change framework - this sits within the strategy document and sets out the strategy's outcomes and how we intend to achieve them over the five year period. A copy of the framework can be found at appendix 1.

4.2 The action plan has been divided by the key themes outlined at 3.1. Each theme includes:-

- Performance measures providing information on how well the Council is performing against the strategic outcomes in the strategy
- Contextual measures providing a health check against outcomes. The Council contributes to these measures, however, they are wider than the scope and influence of the Council
- Improvement actions that will be taken during 2020-21 to respond to the challenges ahead and contribute to meeting the outcomes in the strategy
- Related Sustainable Development Goals

4.3 Due to the lockdown restrictions and summer recess, the action plan for 2020-21 could not be presented to Committee earlier in the year for approval. A copy of the action plan for 2020-21 can be found at Appendix 2 and the Committee is asked to approve the action plan. Progress at Q2 will be presented to the committee at the next meeting scheduled for 4 November 2020.

#### **5. Employee Implications**

5.1 All Resources are required to contribute to the implementation of the Sustainable Development Climate Change strategy and Carbon Management Plan to ensure that actions and targets are met. The sustainable development officer and carbon management officer monitor and report the Council's progress.

#### **6. Financial Implications**

6.1 Actions within the sustainable development and climate change strategy action plan for 2019-20 have been funded from existing Resource budgets or securing external funding.

#### **7. Climate Change, Sustainability and Environmental Implications**

7.1 The sustainable development and climate change strategy contributes towards the Public Sector Climate Change Duties, the Biodiversity Duty and the UN Sustainable Development Goals. The current strategy underwent the Strategic Environmental Assessment process during development.

## **8. Other Implications**

8.1 Failure to meet the Council's sustainable development and climate change objectives, as per the strategy, is one of the Council's top risks.

## **9. Equality Impact Assessment and Consultation Arrangements**

9.1 An equality impact assessment was carried out on the Sustainable Development Strategy. Public and stakeholder consultation on the Sustainable Development and Climate Change Strategy was undertaken.

**Michael McGlynn**

**Executive Director (Community and Enterprise Resources)**

24 August 2020

### **Link(s) to Council Objectives and Values**

Work with communities and partners to promote high quality, thriving and sustainable communities

### **Previous References**

- ◆ Executive Committee report on 6<sup>th</sup> December 2017 entitled 'Sustainable Development and Climate Change Strategy'

### **List of Background Papers**

- ◆ The Climate Change (Scotland) Act 2009
- ◆ Sustainable Development and Climate Change Strategy 2017-2022
- ◆ UN's Sustainable Development Goals

### **Contact for Further Information**

If you would like to inspect the background papers or want further information, please contact:-

Lesley Hinshelwood, Sustainable Development Officer

Ext: 4610 (Tel: 01698 454610)

E-mail: [lesley.hinshelwood@southlanarkshire.gov.uk](mailto:lesley.hinshelwood@southlanarkshire.gov.uk)

## Sustainable Development and Climate Change Strategy

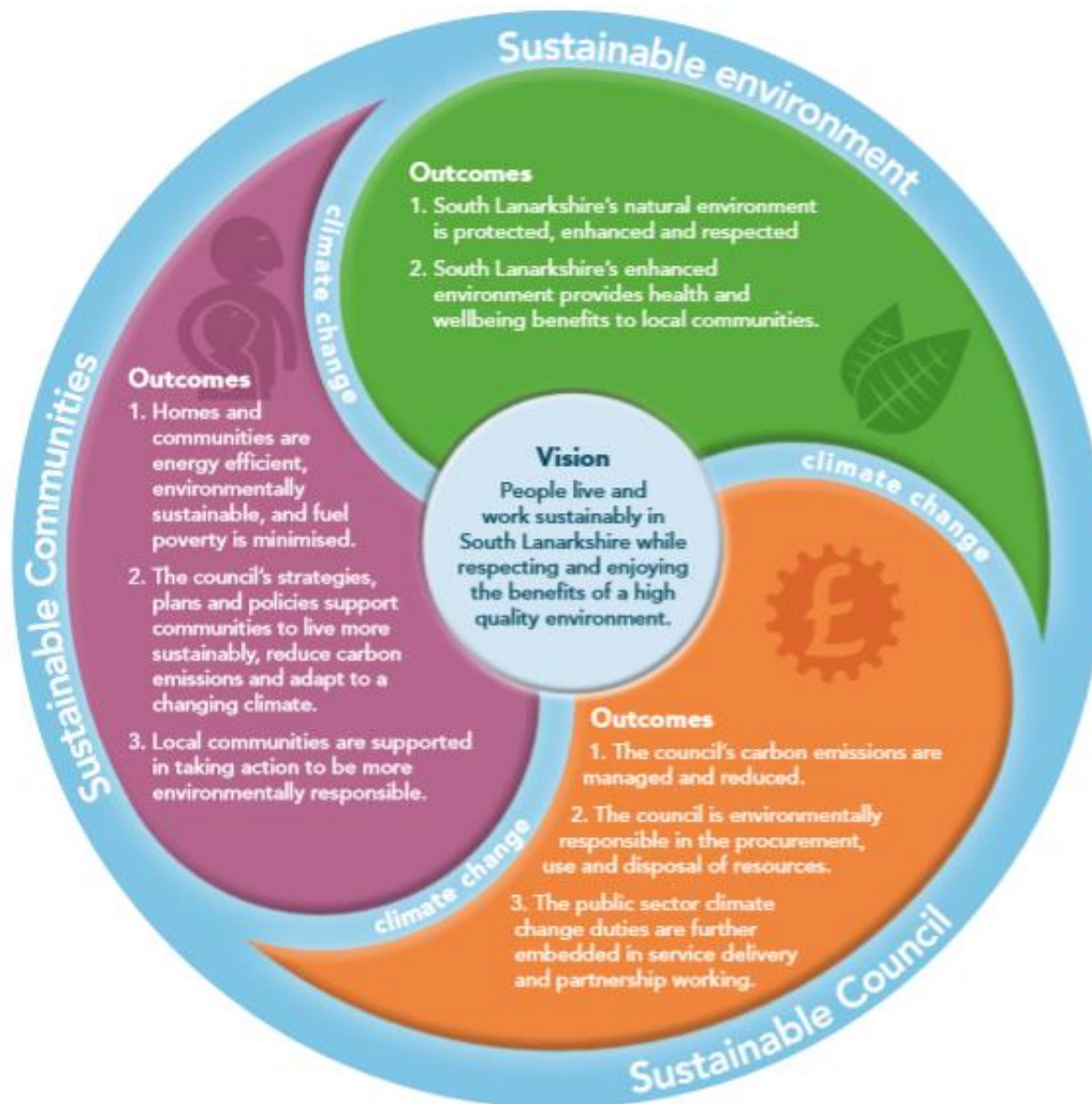
## Framework: summary of strategic outcomes and how we intend to achieve them

Theme	Outcome	How we intend to achieve outcomes
<b>Sustainable Council</b>	<b>The council's carbon emissions are managed and reduced</b>	Implement our Carbon Management Plan to reduce the council's carbon footprint in line with the Scottish Government's targets
		Continue to implement energy efficiency measures across council facilities including investment in renewable and low carbon energy solutions
		Implement measures within the council's fleet to contribute to the Scottish Government's ambition of the decarbonisation of road transport
		Continue to improve the efficiency of our business travel and promote more sustainable travel options for employees
	<b>The council is environmentally responsible in the procurement, use and disposal of resources</b>	Continue to develop procurement processes to improve environmental outcomes and ensure compliance with the council's sustainable procurement duty
		Create a culture of resource efficiency in the workplace
		Maximise the use of environmentally responsible materials and reduce, reuse and recycle construction waste in new and refurbished council facilities
	<b>The public sector climate change duties are further embedded in service delivery and partnership working</b>	Demonstrate leadership and further develop partnership approaches in sustainable development and climate change action
		Ensure that sustainable development and climate change is used as a guiding principle in council plans, policies and strategies and these incorporate environmental considerations
		Take account of the public sector climate change duties (mitigation, adaptation and acting sustainably) when making decisions about the use of our assets and capital investment in our estate
		Continue to raise awareness of sustainable development and the business impacts of climate change with our employees and develop the skills required across the council to influence and adapt to change

Theme	Outcome	How we intend to achieve outcomes
<b>Sustainable Environment</b>	<b>South Lanarkshire's natural environment is protected, enhanced, and respected</b>	Review and assess air quality throughout South Lanarkshire in line with our Air Quality Strategy
		Ensure our planning and land use policies protect and enhance the natural environment and ecosystem services
		Continue to measure progress and report on the state of South Lanarkshire's environment
		Meet our statutory biodiversity duty by implementing our Biodiversity Duty Implementation Plan which will enhance and protect biodiversity through managing our own estate
		Contribute to South Lanarkshire Biodiversity Partnership's action plan ensuring ecosystems are used sustainably and strengthened
		Use our natural environment to help mitigate and adapt to the impacts of climate change
	<b>South Lanarkshire's enhanced environment provides health and wellbeing benefits to local communities</b>	Continue to develop the Greenspace Strategic Partnership to enable people to learn, play and be physically active outdoors in South Lanarkshire
		Work in partnership to develop and implement South Lanarkshire's Outdoor Access Strategy
		Continue to educate our young people about the local environment in which they live and encourage them to reduce the negative impacts they have upon it
		Provide environmental volunteering opportunities and support community groups to manage local environmental projects

Theme	Outcome	How we intend to achieve outcomes
<b>Sustainable Communities</b>	<b>Homes and communities are energy efficient, environmentally sustainable, and fuel poverty is minimised</b>	Explore options for innovative and affordable low carbon energy and heating solutions in local areas that will contribute towards national climate change ambitions
		Continue to invest in energy efficiency measures in council homes including improvements to the fabric of the building, installation of affordable low carbon heating and the use of renewable technologies
		Work in partnership to provide advice and support to local communities to help increase energy efficiency at home and minimise fuel poverty
		Increase focus on sustainability for new developments through innovative design and delivery, using natural resources and environmentally responsible building materials, and incorporating low carbon energy solutions
		Incorporate inclusive and sustainable place-making principles into the design and delivery of area-based housing development projects and programmes
	<b>That council's strategies, plans and policies support communities to live more sustainably, reduce carbon emissions and adapt to a changing climate</b>	Continue to divert waste from landfill by providing and encouraging the effective use of household waste management services across South Lanarkshire
		Work in partnership to help build resilience in local communities and mitigate against the potential increase of health and social inequalities from the impacts of climate change
		Work in partnership to ensure that local infrastructure is resilient to the impacts of climate change and seek opportunities for including blue-green infrastructure to mitigate and adapt to the impacts of climate change
		Encourage the uptake of low emission vehicles across South Lanarkshire
		Help to reduce vehicle emissions and congestion and connect our communities through infrastructure improvement projects in favour of, and integration between, walking, cycling, and using public transport
		Work in partnership to support and encourage sustainable travel choices for people within South Lanarkshire, with emphasis on walking and cycling promoting a healthier lifestyle
		Ensure that opportunities for environmental benefits are realised through our procurement practices and externally funded programmes such as renewable energy fund and developers' contributions
		Supporting renewable energy generation across South Lanarkshire helping to reduce the area's carbon emissions and promote economic growth

		Encourage sustainable production and consumption in the business community and support the growth of a low carbon industry in South Lanarkshire
	<b>Local communities are supported in taking action to be more environmentally responsible</b>	Support communities to access funding for environmentally sustainable projects or action on climate change
		Communicate and engage with communities on environmental and climate change mitigation and adaptation issues empowering further local action
		Support local communities to be more resilient to the impacts of climate change
		Embed sustainability and climate change in the school curriculum and continue to engage young people in environmental education through Eco Schools and similar programmes
		Work in partnership to provide the appropriate skills required for employment opportunities in the low carbon and renewable energy industry
		Devise and implement policies to promote sustainable tourism that creates jobs and promotes local culture and products





## Theme: Sustainable Council

### Goal

The goal of the Sustainable Council theme is:

**‘South Lanarkshire Council is a leading example in environmental performance across South Lanarkshire and that sustainable development principles and tackling climate change, in response to the climate emergency, underpins all council activities, decisions and actions’**

### Impact

The Council will improve its environmental performance; end its contribution to global warming, and service delivery will be resilient to the impacts of a changing climate

### Sustainable Development Goals

Related Sustainable Development Goals for Sustainable Council theme



### Outcomes

We will know we are making good steps towards achieving this theme’s goal when:

1. **The council’s carbon emissions are managed and reduced**
2. **The council is environmentally responsible in the procurement, use and disposal of resources**
3. **The public sector climate change duties are further embedded in service delivery and partnership working**

### Improvement actions and performance measures

The actions during 2020-21 that contribute towards these outcomes and performance measures for each of the outcomes are listed below:

#### **Outcome 1: The Council’s carbon emissions are managed and reduced**

The Council will continue to implement its Carbon Management Plan to reduce its carbon footprint in line with Scotland’s national reduction targets of 56% by 2020, 75% by 2030 and 90% by 2040, based on 1990 baseline, and achieving net-zero emissions by

2045. The sources that are included in the scope of the Council's carbon footprint are: energy from Council buildings, household waste, Council fleet, employee business travel, and energy from street lighting.

<b>Performance Measures</b>	<b>Baseline</b>	<b>Target</b>
Percentage reduction in the Council's carbon footprint by 10% by March 2021 (Current target was set in 2015-16)	<b>2015-16</b>	<b>10% reduction by March 2021</b> (Council target)
Overall percentage reduction in the Council's carbon footprint compared to Scotland's national target of 75% reduction by 2030 (based on 1990 levels)	<b>1990 levels *</b>	<b>75% reduction by 2030</b> (National Target – Climate Change Bill)
Percentage reduction in energy consumption across the Council's estate for 2020-21 compared to 2013-14 baseline year	<b>2013-14</b>	<b>Reduction in energy consumption</b> (Council Target)
Percentage of non-domestic buildings that are heated through low/zero carbon technologies	<b>2020-21</b>	<b>70% of non-domestic buildings by 2032</b> (National Target – energy route map)
Percentage of the Council's cars and light vehicles that are ultra-low emission vehicles	<b>2020-21</b>	<b>Contextual Measure</b>  Phase out petrol and diesel cars from public sector fleet by 2025  (SG commitment in the 'Programme for Government 2019')
* (assuming a 12% reduction between the Scottish Government's baseline year of 1990 and the Council's baseline year of 2005. This is equivalent to the Scottish Government's percentage reduction for the same period. It equates to 0.8% reduction each year (1990-2005) which is below the average 2% reduction trend each year the Council has been on since 2005 to 2020.)		
<b>Improvement Actions for 2020-21</b>	<b>Measures / Timescales</b>	<b>Lead</b>
Further implement the Carbon Management Plan to reduce greenhouse gas emissions from council services (buildings, waste, transport etc.)	<ul style="list-style-type: none"> <li>- Percentage reduction in the Council's carbon footprint for 2020-21 compared to previous year</li> <li>- Overall percentage reduction in the Council's carbon footprint since the Council's original baseline of 2005-06</li> <li>- Review of Carbon Management Plan update by March 2021</li> </ul>	<p>All Resources</p> <p>CER - Support</p>

Establish new carbon reduction targets for the Council in line with the climate change bill 2019	<ul style="list-style-type: none"> <li>- Review carbon reduction targets and recommend new targets for the Council, with approval from the climate change and sustainability committee by March 2021</li> </ul>	CER - Support
Continue to implement energy efficiency measures across council facilities including investment in renewable energy solutions and low/ zero-carbon heating	<ul style="list-style-type: none"> <li>- Projects delivered as part of the CEEF programme during 2020-21</li> <li>- Agree a strategy for the transition of non-domestic buildings to low/ zero carbon heating</li> </ul>	HTR - Property
Deliver at least 10% reduction in vehicle emissions by March 2021 in accordance with the Council's carbon reduction target	<ul style="list-style-type: none"> <li>- Reduce vehicle emissions in 2020-21 against the baseline of 2014-15</li> <li>- All council Resources will work with Fleet Services to implement the identified actions/initiatives from year one of the council's five-year Fleet Strategy (2020-2025)</li> </ul>	CER - Fleet and Environmental
Enable employees to walk and/ or cycle for business travel and commuting	<ul style="list-style-type: none"> <li>- Activities/initiatives implemented during 20/21 to enable and encourage, where possible, employees to walk and cycle for business travel and commuting</li> <li>- Improve current cycling facilities during 20/21</li> <li>- Develop case study examples from the 'Cycle to Work' Scheme on the impact this scheme has had on staff engaging in active travel</li> </ul>	FCR - Personnel

## Outcome 2: The council is environmentally responsible in the procurement, use and disposal of resources

The Council will further embed the principles of a circular economy, which is key to sustainable development and improving the Council's environmental performance. This will also help to create a culture of resource efficiency across the Council

Performance Measures	Baseline	Target
Percentage reduction in the procurement of single-use plastic items across the Council compared to the baseline year of 2018-19	<b>2018-19</b>	<b>% Reduction in single-use items procured</b> (Council target)
Design out embodied carbon from construction (new builds and refurbishment)	<b>2020-21</b>	<b>At least 20% of the total value of materials derive from recycled and reused content</b>

Improvement actions for 2020-21	Measures / Timescales	Lead
Continue to develop procurement processes to improve environmental outcomes and ensure compliance with the council's sustainable procurement duty	<ul style="list-style-type: none"> <li>- Provide training to staff on the flexible framework and prioritisation tools</li> <li>- Update Sourcing Strategy to further embed sustainability measures from evaluation to contract management</li> <li>- Using the prioritisation tool undertake prioritisation assessments for construction, social care and information technology categories</li> </ul>	FCR - Procurement
Promote the 'reduce, reuse and recycle' principle across the Council to make better use of materials and create less damage to the environment	<ul style="list-style-type: none"> <li>- Initiatives implemented during 2020-21 to reduce single use items across the Council</li> <li>- Initiatives implemented during 2020-21 to recycle more within Council workplaces</li> <li>- Introduce a reuse scheme for employees and investigate expanding this to schools</li> <li>- Involvement in national campaigns promoting the circular economy</li> </ul>	All Resources CER – waste CC&S Steering Group CER – support
Establish further baselines for performance measures to demonstrate 'The Council is environmentally responsible in the procurement, use and disposal of resources'	<ul style="list-style-type: none"> <li>- Investigate how to measure and manage emissions from the Council's supply chain</li> <li>- Investigate tools to measure the Council's progress in the transition to a circular economy</li> </ul>	CC&S Steering Group

<b>Outcome 3: The Public Sector Climate Change Duties are further embedded in service delivery and partnership working</b>		
<p>The Council will continue to deliver on its public sector climate change duties - climate change mitigation, climate adaptation, and acting sustainably - and further embed these duties in its activities, decisions, and actions. It will provide leadership on climate change action across the local authority area and work collaboratively with partners and communities in the transition to a net-zero South Lanarkshire and reducing climate risks</p>		
Performance Measures	Baseline	Target
Self-evaluation results using Climate Change Assessment Tool	<b>2017</b>	Continued Improvement

Carbon emissions in tonnage for South Lanarkshire (figures from BEIS with a 2-year lag)	2020	Contextual Measure
Percentage reduction on area-wide emissions compared to previous year (figures from BEIS with a 2-year lag)	2019	Contextual Measure
Per capita figure for carbon emissions in South Lanarkshire compared to the Scottish per capita figure (figures from BEIS with a 2-year lag)	2020	Contextual Measure
<b>Improvement actions for 2020-21</b>	<b>Measures / Timescales</b>	<b>Lead</b>
Implement the Council's sustainable development and climate change strategy and action plan to meet agreed outcomes	<ul style="list-style-type: none"> <li>- Start the review of the strategy and action plan and progress during 2020-21 as per the timetable approved by committee</li> <li>- Identify and establish project review groups to lead on action to meet the Council's sustainable development and climate change outcomes</li> </ul>	CER – Support  CC&S Steering Group
Continued collaborative approach to climate adaptation for the city region's through the Climate Ready Clyde Partnership	<ul style="list-style-type: none"> <li>- Progress on the development of a region-wide climate adaptation strategy and action plan through the Climate Ready Clyde partnership</li> <li>- Climate Ready Clyde initiatives delivered during 2020-21</li> <li>- Progress on the Clyde Re:Built - Climate KIC's deep demonstration project - during 2020-21</li> </ul>	CER - Support
Ensure Strategic Environmental Assessment (SEA) of all Council led policies, plans, programmes and strategies is undertaken	<ul style="list-style-type: none"> <li>- Produce annual SEA report for Executive Committee, and other governance groups, which includes an assessment of the impact the SEA process has had on the preparation of the plans, policies and strategies, and the difference it had on the final documents</li> </ul>	CER - Planning and Economic Development
Maximise funding to further deliver the Council's climate change duties (mitigate, adapt and act sustainably) across the Council and wider area	<ul style="list-style-type: none"> <li>- Details of funding bids granted to enable climate change mitigation and adaptation projects to be progressed</li> </ul>	All Resources

Prepare for changes being introduced in the annual climate change statutory reporting from 2022	<ul style="list-style-type: none"> <li>- Establish a process for aligning and reporting spend against the Council's carbon reduction targets and mitigating climate risks</li> </ul>	CC&S Steering Group
Build on current partnerships and relations across South Lanarkshire that will support and enable a transition to net-zero area-wide emissions and mitigate climate risks	<ul style="list-style-type: none"> <li>- Examples of the Council's involvement in collaborative approaches to further reduce area-wide emissions and mitigate climate risks</li> <li>- Investigate the potential of establishing a South Lanarkshire Climate Change Charter/Statement to allow businesses to sign up to</li> </ul>	All Resources CC&S Steering Group

## Theme: Sustainable Environment

### Goal

The goal for the Sustainable Environment theme is:

**'South Lanarkshire's high-quality natural environment and public spaces provides essential services and shared benefits for people and wildlife'**

### Impact

The quality of the natural environment plays a crucial role in people's physical, mental, and social well-being; and local communities should have access to high quality open space within easy walking distance. High-quality public spaces and natural environment is also important from an economic perspective and can attract businesses and investment; and can help to increase house prices in the area. The natural environment provides us with resources essential to meet basic needs like clean air, fresh water, food, medicine, raw materials, and energy (ecosystem services). Biodiversity is a key indicator of a healthy ecosystem. Healthy ecosystems can also provide natural solutions to climate mitigation and adaptation.

### Sustainable Development Goals

Related Sustainable Development Goals for Sustainable Environment theme



### Outcomes

We will know we are making good steps towards achieving this theme's goal when:

1. South Lanarkshire's natural environment is protected, enhanced, and respected
2. South Lanarkshire's enhanced environment provides health and wellbeing benefits to local communities

### Action and performance measures

The actions during 2020-21 that contribute towards these outcomes and performance measures for each of the outcomes are listed below:

<b>Outcome 1: South Lanarkshire's natural environment is protected, enhanced, and respected</b>		
The Council will continue to work in partnership to protect, enhance and respect the natural environment and public spaces within South Lanarkshire. This includes South Lanarkshire's countryside and greenspaces, biodiversity, air, and land quality, contaminated and derelict land. The Council has a public sector duty to take care of nature all around us, not just in specific protected sites. The natural environment also provides carbon sinks to help offset carbon emission in our transition to net-zero emissions and helps to reduce the impact from climate risks i.e. flood management solutions and providing cooling and shade.		
<b>Performance Measures</b>	<b>Baseline</b>	<b>Target</b>
Percentage of streets found to be acceptable during survey (Local Environmental Audit and Management System street cleanliness score)	<b>2020</b>	<b>Remain at 95%</b>  (Keep Scotland Beautiful Target)
The biennial State of the Environment report for South Lanarkshire provides a baseline for identifying local environmental issues and provides an overview of environmental conditions	<b>2019 report</b>	<b>Contextual Measure</b> Status and trend assessment of the 55 indicators compared to previous report
Number of Local Nature Reserves declared	<b>2020</b>	<b>Increase in the number of LNRs across South Lanarkshire</b>
Proportion of LNRs with active community management groups	<b>2020</b>	<b>100% of designated LNRs</b>
<b>Improvement actions for 2020-21</b>	<b>Measures / Timescales</b>	
		<b>Lead</b>

<p>Work in partnership to reduce land and air pollution within South Lanarkshire, minimising the impacts on human health and the natural environmental</p>	<ul style="list-style-type: none"> <li>- Progress the development of a formal Litter Strategy that identifies a range of options and timescales to promote the new Code of Practice on Litter and Refuse, with particular emphasis on prevention</li> <li>- Implement projects identified within the Air Quality Action Plan for 2020-21 which contributes to improving air quality in south Lanarkshire.</li> <li>- Implement Contaminated Land Strategy for South Lanarkshire</li> <li>- Implement projects approved within the Vacant and Derelict Land Fund framework (as per funding agreed with Scottish Government)</li> </ul>	<p>CER – Grounds</p> <p>CER – Environmental Health</p> <p>CER – Planning and Economic Development</p>
<p>Prepare an Open Space Strategy in partnership with Glasgow and Clyde Valley Green Network Partnership and other council services. Strategy will contain standards on access to and quality of open spaces.</p>	<ul style="list-style-type: none"> <li>- Draft strategy to be presented to Planning Committee for approval by March 2021 and thereafter be subject to public consultation</li> <li>- Establish baseline for proportion of population in South Lanarkshire that has access to good quality open space</li> </ul>	<p>CER – Planning and Economic Development</p>
<p>Implement the Council's Biodiversity Duty Implementation Plan</p>	<ul style="list-style-type: none"> <li>- Actions delivered within the Biodiversity Duty Implementation Plan during 2020-21 and the impact these actions have made to improving biodiversity across the Council's estate</li> </ul>	<p>CER – Countryside and Greenspace</p>
<p>Continue to work in partnership to deliver actions from South Lanarkshire's Biodiversity Strategy 2018-2022</p>	<ul style="list-style-type: none"> <li>- The Council's progress on the delivery of actions from the South Lanarkshire's Biodiversity Strategy during 2020-21</li> <li>- Develop case study examples demonstrating the impact from partnership projects during 2020-21</li> </ul>	<p>CER – Countryside and Greenspace</p>
<p>Maximise the use of our natural environment to help mitigate and adapt to the impacts of climate change</p>	<ul style="list-style-type: none"> <li>- Details of nature-based solution projects that contribute to mitigate or adapt to climate change during 2020-21</li> <li>- Through random sampling, estimate south Lanarkshire's canopy cover* <i>(*Trees, woodlands and forests from a bird's</i></li> </ul>	<p>CER – Countryside and Greenspace</p>



	<p><i>eye view)</i></p> <ul style="list-style-type: none"> <li>- Seek approval to create a Tree Canopy Cover Strategy that 'manages, protects and enhances', a resilient, healthy and diverse, benefit-generating canopy cover that is in tune with our needs and aspirations and responds to the challenges of our times (including climate change)</li> </ul>	
--	---	--

**Outcome 2: South Lanarkshire's enhanced environment provides health and wellbeing benefits to local communities**

The Council will work in partnership to enable local communities to access the benefits from a healthy and quality natural environment in South Lanarkshire

<b>Performance Measures</b>	<b>Baseline</b>	<b>Target</b>	
Percentage of adults satisfied with parks and open spaces (results from Scottish Household Survey)	<b>2019-20</b>	<b>Maintain or improve on previous survey results</b> (Council Target)	
<b>Improvement actions for 2020-21</b>	<b>Measures / Timescales</b>		<b>Lead</b>
In partnership with local communities, continue programme of restructuring council owned woodland and improving recreational access	<ul style="list-style-type: none"> <li>- Consult on Management Plans for Bothwell and Blantyre Woods with community interests, David Livingstone Centre and other stakeholders by March 2021</li> <li>- Continue to explore funding opportunities for phase 2 regeneration work at Greenhall and Millheugh, Blantyre including costed proposals for replacement river crossing</li> </ul>		CER - Facilities Waste and Ground
Contribute to community health and wellbeing through well managed and accessible outdoor and greenspace	<ul style="list-style-type: none"> <li>- Continued growth of healthy walking opportunities through the Get Walking Lanarkshire partnership initiative</li> <li>- Retain Green Flag accreditation at Strathaven Park, Cambuslang Park and Castlebank Park, through implementation of agreed action plans</li> </ul>		CER - Facilities Waste and Ground

	for 2020-21	
Encourage recreational, and active travel, access to the outdoors by implementing Outdoor Access Strategy and extending Clyde Walkway	<ul style="list-style-type: none"> <li>- Delivery of repairs programme to footbridges across the core path network by March 2021 in line with available external and internal capital funding (The Core Paths Plan)</li> <li>- Develop implementation plan for linking The Clyde Walkway to 'Scotland's Great Trails' long-distance strategic access network.</li> </ul>	CER - Facilities Waste and Ground

## Theme: Sustainable Communities

### Goal

The goal of the Sustainable Communities theme is:

**'South Lanarkshire Council's activities, decisions and actions enable communities, businesses and individuals to live, work and enjoy South Lanarkshire in a more sustainable and environmentally friendly way, help build resilience to the impacts of climate change and a just transition to a net-zero society'.**

### Impact

The Council has a responsibility to help those who live, work, and visit South Lanarkshire to do so in a sustainable and environmentally friendly way; and to empower local communities to take climate action and be more environmentally responsible. The Council also has a role to play in ensuring equality in the transition to a net-zero South Lanarkshire; this includes maximising new work opportunities and the upskilling of South Lanarkshire's workforce, reducing inequalities from the impact of climate change, promoting social justice throughout the transition to net-zero, and supporting industries, workers and communities. A more sustainable and environmentally responsible South Lanarkshire could attract more investment to the area and in turn add to sustainable economic growth.

### Sustainable Development Goals

Related Sustainable Development Goals for Sustainable Communities theme



**Outcomes**

We will know we are making good steps towards achieving this theme’s goal when:

1. Homes and communities are energy efficient, environmentally sustainable, and fuel poverty is minimised
2. That council’s strategies, plans and policies support communities to live more sustainably, reduce carbon emissions and adapt to a changing climate
3. Local communities are supported in taking action to be more environmentally responsible

**Action and performance measures**

The actions during 2020-21 that contribute towards these outcomes and performance measures for each of the outcomes are listed below:

**Outcome 1: Homes and communities are energy efficient, environmentally sustainable, and fuel poverty is minimized**

The Council will continue to invest in energy efficiency in council homes and work with partners to help improve energy efficiency across all tenures in South Lanarkshire and minimise fuel poverty. In the transition to a net-zero society the Council will explore options for innovative and affordable low carbon heating solutions in the local area. There will be an increased focus on sustainability for new builds and refurbishments in the domestic sector through design and construction and incorporating sustainable place-making principles in housing development programmes

Performance Measures	Baseline	Target
Percentage of Council dwellings that are meeting the Energy Efficiency Standard for Social Housing (EESH) by 31st March 2021	2020-21	93.39%  Internal anticipated target

Housing carbon emissions in tonnage for South Lanarkshire (figures from BEIS with a 2-year lag)	<b>2020</b>	<b>Contextual Measure</b>
Percentage reduction on housing area-wide emissions compared to previous year (figures from BEIS with a 2-year lag)	<b>2020</b>	<b>Contextual Measure</b>
Fuel poverty percentage in South Lanarkshire	<b>2020</b>	<b>Contextual Measure</b>
<b>Improvement actions for 2020-21</b>	<b>Measures / Timescales</b>	<b>Lead</b>
Explore options for innovative and affordable low carbon energy and heating solutions in local areas that will contribute towards national climate change ambitions	- During 2020/21 develop and propose a Local Heat and Energy Efficiency Strategy (LHEES) in line with the Scottish Governments pilot programme	HTR
Continue to improve the energy efficiency of the Council's housing stock contributing towards national climate change ambitions	<ul style="list-style-type: none"> <li>- The Housing Investment Programme continues to incorporate sustainable changes to the Council's housing stock during 2020/21</li> <li>- Establish a baseline for the percentage of Council homes meeting EPC level B by March 2021 – Scottish target is that all socially rented homes must be EPC B rated by 2032</li> </ul>	HTR
		HTR
		HTR
Continue to maximise Home Energy Efficiency Programme funding to support owners and private rented properties	- Total amount of funding secured for 2020-21 for HEEPS: Area Based Scheme	HTR
Develop and deliver appropriate partnership actions to provide and promote energy advice and support to households resulting in warmer homes and helping to reduce fuel poverty	- Continue to deliver actions within the Fuel Poverty Sub-Group action plan during 2020-2	HTR

**Outcome 2: That council's strategies, plans and policies support communities to live more sustainably, reduce carbon emissions and adapt to a changing climate**

The Council has a role in enabling people in South Lanarkshire to live within environmental limits through its policies, powers,

actions and partnership activities. Supporting communities and businesses in the transition to a net-zero society and economy. Helping local communities build resilience against the impacts of climate change; benefit from any opportunities of a changed climate; and help to minimise the impacts of climate change widening the gap in health and social inequalities

<b>Performance Measures</b>	<b>Baseline</b>	<b>Target</b>
Percentage of total household waste that is recycled	<b>2020-21</b>	<b>50%</b>
Percentage of material accepted by the council's paper and card processor	<b>2019-20</b>	<b>Increase on 2019/20 figure</b> (internal target)
Percentage of household waste recycled at the council's household waste and recycling centres	<b>2019-20</b>	<b>Increase on 2019/20 figure</b> (internal target)
Percentage of household waste sent to landfill in 2020	<b>25.2%</b>	<b>Below 25.2%</b> (internal target)
Percentage of adults satisfied with refuse collection (results from Scottish Household Survey)	<b>2020-21</b>	<b>Increase on 2019/20 figure</b> (internal target)
Number of properties prone to flooding in South Lanarkshire	<b>2020-21</b>	<b>Contextual Measure</b>
Percentage of adults travelling to work or education by active or public transport (Scottish Household Survey)	<b>2020-21</b>	<b>Contextual Measure</b>
Percentage mode share of children travelling to school by active or public transport (annual national 'Hands Up' survey)	<b>2020-21</b>	<b>Contextual Measure</b>
Carbon emissions tonnage for transport emissions in South Lanarkshire (figures from BEIS with a 2-year lag)	<b>2020</b>	<b>Contextual Measure</b>
Percentage reduction in carbon emissions from transport compared to previous year (figures from BEIS with a 2-year lag)	<b>2020</b>	<b>Contextual Measure</b>
Carbon emission tonnage for industry in South Lanarkshire (figures from BEIS with a 2-year lag)	<b>2020</b>	<b>Contextual Measure</b>

Percentage reduction in carbon emissions from industry in South Lanarkshire (figures from BEIS)	2020	Contextual Measure	
Improvement actions for 2020-21	Measures / Timescales		Lead
Undertake participation rate study to establish the % of householders using the council's food waste collection service	<ul style="list-style-type: none"> <li>- Share of household using food caddy to dispose food waste to inform Council initiatives in relation to food waste in the following years of implementation of the strategy</li> </ul>		CER – Facilities, waste and grounds
Participation in the Green Heat in Greenspace project being run by Greenspace Scotland	<ul style="list-style-type: none"> <li>- Identify potential opportunities for sources of sustainable heat in South Lanarkshire's greenspace</li> </ul>		CER - Support
Manage flooding priorities and deliver prioritised flood protection schemes	<ul style="list-style-type: none"> <li>- Progress / deliver prioritised flood protection projects / studies in line with available capital and revenue funding</li> </ul>		CER - Roads and Transportation
Deliver new and improved low carbon vehicle charging infrastructure	<ul style="list-style-type: none"> <li>- Number of charging infrastructure points available to the public within South Lanarkshire</li> </ul>		CER – Roads and Transportation
Encourage greater use of public transport by working with partners to improve public transport infrastructure	<ul style="list-style-type: none"> <li>- Progress / deliver prioritised improvements to bus and rail infrastructure (e.g. park and ride) in line with agreed Park and Ride Strategy (2018-2027) and available external funding</li> </ul>		CER - Roads and Transportation
Encourage active travel by extending our network of cycle routes and implementing the spaces for people projects	<ul style="list-style-type: none"> <li>- Progress / deliver walking and cycling projects / schemes in line with agreed 2020-21 capital programme</li> <li>- Progress / deliver the four Spaces for People projects in line with available funding and taking cognisance of Covid19 restrictions / developments and government guidance</li> </ul>		CER - Roads and Transportation
Ensure the development of a sustainable food system to overcome social, health, economic and environmental issues related to food	<ul style="list-style-type: none"> <li>- Implement year one of the Good Food Strategy (2020-2025) Action Plan and monitor its impacts</li> </ul>		CER - Support
Develop supporting planning guidance in support of the Local Development Plan and the Sustainable Development and Climate Change Strategy action plan to ensure new buildings are designed to be as carbon	<ul style="list-style-type: none"> <li>- Supporting Planning Guidance to be presented to committee for approval by March 2021 and thereafter be subject to public consultation. Awareness sessions to be developed for planning officers and developers/agents to ensure roll out</li> </ul>		CER – Planning and Building Standards

neutral as possible and resilient to climate change and to encourage the retro fitting of appropriate technology in existing buildings.	guidance in 2021/22	
Review and update guidance for building standards surveyors in relation to climate change mitigation in new buildings and the adaptation of existing buildings	<ul style="list-style-type: none"> <li>- Complete review and develop service specific actions by March 2021. Awareness sessions to be developed for planning officers and developers/agents to ensure roll out of the in 2021/22</li> </ul>	CER – Planning and Building Standards
Provide advice and support to businesses in the transition to a net-zero economy	<ul style="list-style-type: none"> <li>- Develop an Economic ‘Response, Recovery and Renewal’ Strategy framed around three themes: People, Place and Business whilst creating the right conditions for a low carbon economy</li> <li>- Support provided to Smart Sustainable East Kilbride (SSEK) in the delivery of their action plan priorities for 2020-21</li> </ul>	

### Outcome 3: Local communities are supported in taking action to be more environmentally responsible

The Council will support local communities to enable and empower local action on climate change, sustainability, and the local environment. This would include volunteering opportunities, training and guidance, support for young people through programmes like eco-schools and STEM, working in partnership to help upskill people for employment opportunities in the just transition to a low carbon economy.

Performance Measures	Baseline	Target	
Percentage of schools actively engaged with the eco-schools programme	2019-20	Maintain or increase from previous year	
Number of volunteer days from the Environmental Volunteering programme across South Lanarkshire during 2020-21	2020-21	1,000	
Improvement actions for 2020-21	Measures / Timescales		Lead
Provide environmental volunteering opportunities and support community groups to manage local environmental projects	<ul style="list-style-type: none"> <li>- Undertake sample case studies to determine impacts of volunteering (<i>% volunteers expressing positive experience/ health benefits</i>)</li> </ul>		CER - Facilities Waste and Ground

	<ul style="list-style-type: none"> <li>- Details of support provided to community groups during 2020-21 to manage local environmental projects</li> </ul>	
Work towards the introduction of Part 9 of the Community Empowerment Act 2015 in relation to food growing	<ul style="list-style-type: none"> <li>- Publish the Food Growing Strategy and implement the Year 1 action plan to continue to increase all types of food growing provision across South Lanarkshire</li> </ul>	CER - Facilities Waste and Ground
As part of a longer-term plan to enhance the school curriculum, formulate a process to coherently capture aspects of sustainability and climate change in the school curriculum and continue to engage young people in environmental education through Eco Schools or other initiatives.	<ul style="list-style-type: none"> <li>- Identification and collation of sustainability and climate change activity within the school curriculum during 2020/21 as a single source of information</li> </ul>	Education Resources
Work in partnership to provide the appropriate skills required for employment opportunities in the low carbon and renewable energy industry	<ul style="list-style-type: none"> <li>- Promotion and tracking of initiatives/events to promote participation in STEM</li> </ul>	Education Resources