

Report

Report to:	Roads Safety Forum
Date of Meeting:	22 June 2021
Report by:	Executive Director (Community and Enterprise Resources)

Subject:	Spaces for People – 20mph Town Centres and Schools
----------	---

1. Purpose of Report

1.1. The purpose of the report is to:-

- ♦ update the Forum in relation to the Spaces for People 20mph Town Centre and School projects

2. Recommendation(s)

2.1. The Forum is asked to approve the following recommendation(s): -

- (1) that the contents of the report are noted, and the detailed 20mph Spaces for People projects be supported.

3. Background

3.1. In response to the COVID-19 pandemic, Scottish Government launched their Spaces for People grant funding to support local authorities to introduce temporary measures to support social distancing and active travel messages as well providing an outside environment where this can take place.

3.2. The Council submitted four funding applications with a total of £1.200m being awarded. This included £0.750m for the outdoor school environment and £0.100m for town centres with a phased implementation of measures being identified to address the public health emergency and supporting of active travel during this time. Additionally, both projects are deemed to provide road safety benefits due to reduced vehicular speeds included as part of these works.

4. School Outdoor Environment - Spaces for People

4.1. Investigations were undertaken in conjunction with Education Resources regarding social distancing requirements and facilitating active travel during the pandemic for all 148 schools. Every school was discussed between representatives from Roads and Transportation Services and Education Resources.

4.2. Initial considerations included a variety of actions resulting in support with additional equipment requirements such as providing cones and barriers to aid social distancing and space management and specific signage to address local issues. Social distance and active travel banners with associated signing and footway markings were also provided at all schools. Cycle storage was also provided at 7 schools where this was identified as a requirement through liaison with Education Resources:- St. Paul's, Glenlee and St. Marys Primary Schools, Hamilton; Carnwath

Primary School, Carnwath; St. Marys Primary School, Lanark, Biggar Primary School, Biggar and Machanhill Primary School, Larkhall.

- 4.3. A second phase of measures was developed and mandatory 20mph speed limits outside approximately 90 schools was agreed.
- 4.4. This second phase of measures will change advisory 20mph speed limits to mandatory 20mph speed limits at 88 school-based locations and is expected to change the characteristics of the roads outside schools to encourage active travel by pupils and parents/carers.
- 4.5. An informed decision was taken as to which schools to include and which features to implement as part of the 20mph project. The classification of roads (A or B class or unclassified), estimated traffic volumes, the nature of the local environment, road layout and available space were all considered to determine suitable features to be provided at each location.
- 4.6. Schools not included for a mandatory 20mph speed limit typically have a part-time mandatory 20mph speed limit already in place with the use of electronic signs. Where this is not the case there may be other measures deemed more suitable regarding the setting of a school speed limit. Schools not included will be considered upon conclusion of the Spaces for People project.
- 4.7. Details of the 88 locations and individual works drawings have been provided to elected members, communicated to schools and are available to the public on the Council website www.southlanarkshire.gov.uk/spacesforpeople. Schools included within the 88 project locations have been provided as Appendix A. Example photographs have been provided as Appendix B.
- 4.8. Banners will be provided to schools involved within these works and post wraps may also be considered to further promote the 20mph messaging and reasoning behind this project. Graphics of these items are provided within Appendix C.

5. Town Centres - Spaces for People

- 5.1. Town centres are a core element of local communities and required consideration as to the support required so that people could make essential trips by active travel methods and follow social distancing rules. Each area is unique in terms of its current infrastructure and potential for temporary measures. In addition, there are smaller neighbourhood centres which face similar issues.
- 5.2. A variety of interventions were considered including behavioural change publicity, temporary signage, barriers, lining and markings and reallocation of road/ parking/ loading space. The following were taken forward: -
 - ◆ signage and pavement stencils requesting social distancing were provided in South Lanarkshire towns and major neighbourhood centres
 - ◆ publicity to encourage local shopping was undertaken
 - ◆ Hyndford Place in Lanark was converted to an open space, with benches/umbrella coverings for local businesses and their customers to utilise
- 5.3. A second phase of measures was agreed to introduce 20mph cordons close to several town centres. Towns included are: -

- ◆ Strathaven
- ◆ Bothwell
- ◆ Larkhall
- ◆ Uddingston
- ◆ Carluke
- ◆ Lanark

5.4. These incorporate gateway signage in the short term accompanied by coloured road surfacing and carriageway markings. This measure is to encourage active travel to and within these cordons as vehicles would travel at slower speeds through these. The gateways would help create a change in characteristics to alter driver behaviour. An example drawing and photograph is provided as Appendix D.

5.5 Post wraps will be displayed at these locations to further promote the 20mph messaging and reasoning behind this project. Graphics are provided within Appendix C.

6. Temporary Traffic Regulation Orders (TTROs)

6.1. The 20mph speed reduction works both at schools and within town centres required a Temporary Traffic Regulation Order (TTRO) to be in place. A TTRO allows a swifter implementation of revised speed limits than a standard Traffic Regulation Order (TRO) and is suited to this project due to the nature and ethos of the funding and works.

6.2. Elected members received notification of the TTROs during January 2021.

6.3. It is our intention to monitor these locations with a view to permanency before the expiry of the 18 month TTRO. This will require the full TRO process to be undertaken which will include the usual consultees and processes including the opportunity to comment or object which may require alterations to be contemplated.

6.4. Any comments received from elected members will be considered in relation to any future action regarding the locations.

7. Project Delivery Timescales Future Action

7.1. These works were put out to tender December 2020 with the appointment of a contractor made during January 2021. Gateway signing and carriageway signing for the 20mph limits was initially programmed for completion in Spring 2021, however, material delays and other programmed works have delayed progress at several locations. The introduction of these 20mph school and town centre works are presently ongoing with works expected to complete during summer 2021.

7.2. 'Before' speed measurements were undertaken at a sample of school locations and all the town centre locations before project delivery and 'after' measurements will be taken later in the year.

7.3. The overall success of the Spaces for People project will be considered once measures have been fully implemented. Views will also be sought at this point. This will influence discussions regarding other schools not currently included within the project and the best approach to school speed limits within various settings. Thereafter, a decision will be undertaken regarding any actions to take within a future phase of school or town centre speed limit related works.

- 7.4. On conclusion of the Spaces for People project the mandatory 20mph speed limits may be taken forward as permanent provisions at schools in South Lanarkshire. The same considerations will be undertaken for Town Centre locations which may include the requirement for adaptations or differing materials or features to be considered.

5 Employee Implications

- 5.1. There are no employee implications as the project has utilised existing resources.

6 Financial Implications

- 6.1. The project is fully funded by Spaces for People grant funding managed by Sustrans on behalf of Scottish Government.

7 Climate Change, Sustainability and Environmental Implications

- 7.1. There are no significant implications in terms of climate change, sustainability and environmental implications associated with this report. It should be noted however that active and sustainable travel schemes and those which promote pedestrian skills may have a positive impact on the environment by reducing reliance on private vehicles, supporting South Lanarkshire's Sustainable Development and Climate Change Strategy. Reduced motorised vehicle journeys will improve health and wellbeing whilst reducing reliance on fossil fuels and supports improvements in air quality through reduced vehicle emissions.

8 Other Implications

- 8.1. There are no other significant implications as result of the contents of this report.

9. Equality Impact Assessment and Consultation Arrangements

- 9.1. This report does not introduce a new policy, function or strategy or recommend a change to an existing policy, function or strategy and, therefore, no impact assessment is required.

Michael McGlynn

Executive Director (Community and Enterprise Resources)

3 June 2021

Link(s) to Council Values/Ambitions/Objectives

- Make communities safer, stronger and sustainable
- Protect vulnerable children, young people and adults
- Get it right for children and young people
- Focused on people and their needs

Previous References

Community and Enterprise Resources Committee, 15 September 2020, "Active Travel Projects 2020/2021".

List of Background Papers

None.

Contact for Further Information

If you would like to inspect the background papers or want further information, please contact :-

Colin Smith, Engineering Officer, Roads and Transportation Services

Ext: 3757 (Tel: 01698 453757)

E-mail: colin.smith@southlanarkshire.gov.uk

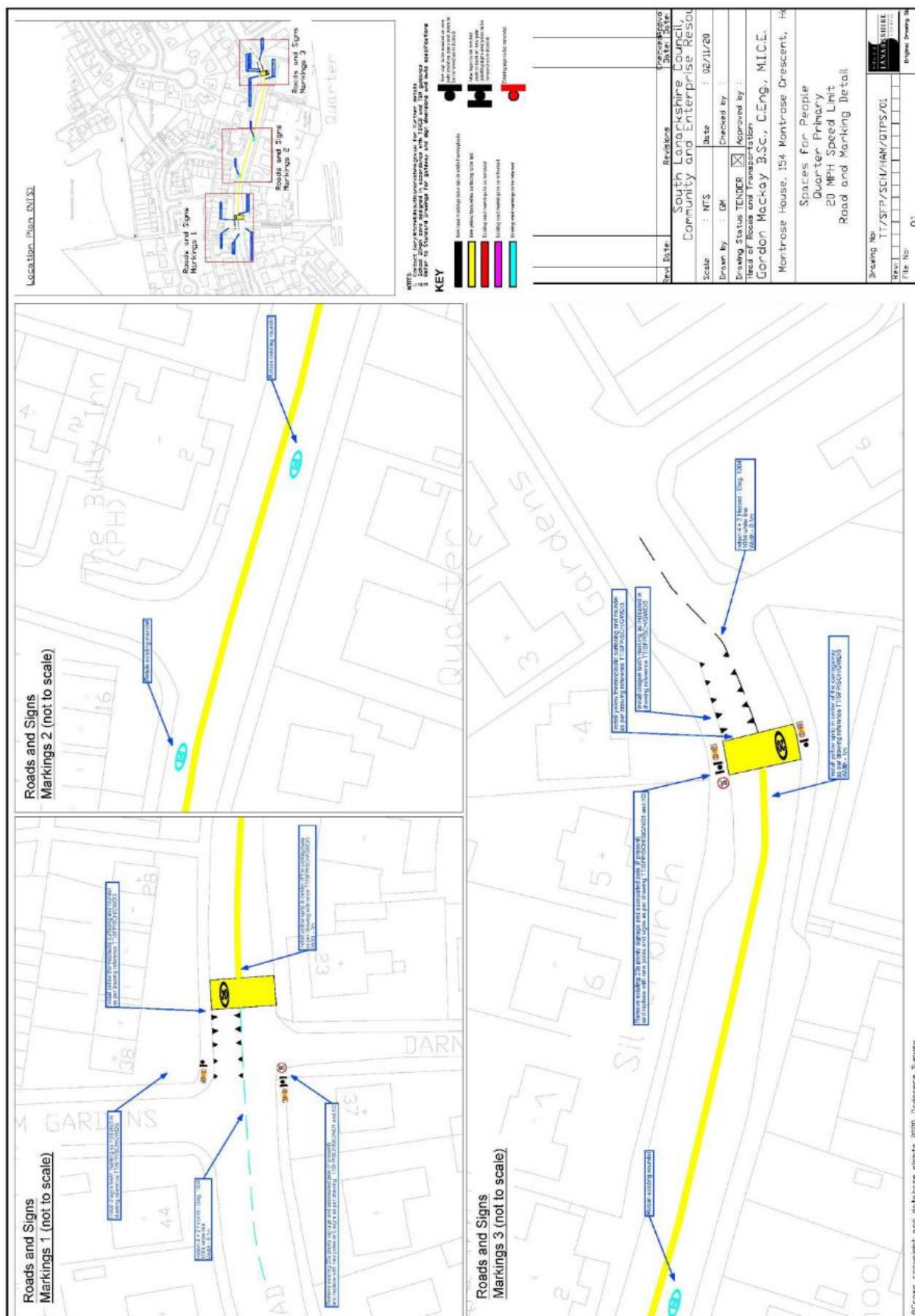
Spaces for People – 20mph Schools by Ward

Ward	Project No.	School(s)
Ward 1	66	Braidwood Primary School, Braidwood, Carluke
Ward 1	67	Carluke Primary School, Carluke
Ward 1	75	Crawforddyke Primary School, Carluke
Ward 1	76	High Mill Primary School and Victoria Park Primary School, Carluke
Ward 1	78	Kirkton Primary School, Carluke
Ward 1	81	Law Primary School, Law, Carluke
Ward 1	86	St Athanasius' Primary School, Carluke
Ward 2	77	Kirkfieldbank Primary School, Kirkfieldbank, Lanark
Ward 2	80	Lanark Primary School, Lanark
Ward 2	83	New Lanark Primary School, Lanark
Ward 2	85	Robert Owen Memorial Primary School and St. Mary's Primary School, Lanark
Ward 3	65	Abington Primary School, Abington
Ward 3	68	Carmichael Primary School, Carmichael
Ward 3	69	Carnwath Primary School, Carnwath
Ward 3	70	Carstairs Junction Primary School, Carstairs Junction
Ward 3	71	Carstairs Primary School, Carstairs, Lanark
Ward 3	73	Coulter Primary School, Coulter, Biggar
Ward 3	74	Crawford Primary School, Crawford
Ward 3	79	Lamington Primary School, Lamington, Biggar
Ward 3	82	Leadhills Primary School, Leadhills, Biggar
Ward 3	87	Tinto Primary School, Symington, Biggar
Ward 3	88	Wiston Primary School, Wiston, Biggar
Ward 4	72	Coalburn Primary School, Coalburn
Ward 4	84	Rigside Primary School, Rigside, Lanark
Ward 4	89	Woodpark Primary School, Lesmahagow
Ward 5	1	Auldhouse Primary School, Auldhouse
Ward 5	55	Chapelton Primary School, East Kilbride
Ward 5	9	Gilmourton Primary School, Gilmourton
Ward 5	10	Glassford Primary School, Glassford
Ward 5	19	Sandford Primary School, Sandford
Ward 5	23	Wester Overton Primary School, Strathaven
Ward 5	33	Newfield Primary School, Stonehouse
Ward 5	49	Stonehouse Primary School, Stonehouse
Ward 6	6	Crosshouse Primary School, East Kilbride
Ward 6	11	Greenhills Primary School, East Kilbride
Ward 6	20	South Park Primary School, East Kilbride
Ward 6	22	St Vincent's Primary School, East Kilbride
Ward 7	4	Canberra Primary School, East Kilbride
Ward 7	8	East Milton Primary School, East Kilbride
Ward 7	17	Murray Primary School, East Kilbride
Ward 7	18	Our Lady of Lourdes Primary School, East Kilbride
Ward 8	2	Blacklaw Primary School, East Kilbride
Ward 8	12	Halfmerke Primary School and West Mains School, East Kilbride
Ward 8	15	Maxwellton Primary School and Greenburn School, East Kilbride

Ward 9	16	Mossneuk Primary School, East Kilbride
Ward 10	3	Calderglen High School and Sanderson High School, East Kilbride
Ward 10	13	Hunter Primary School, East Kilbride
Ward 10	14	Long Calderwood Primary School, East Kilbride
Ward 10	21	St Leonard's Primary School, East Kilbride
Ward 11	57	Stonelaw High School and Calderwood Primary School, Rutherglen
Ward 11	58	Cathkin Primary School, Rutherglen
Ward 11	62	Spittal Primary School, Rutherglen
Ward 12	54	Bankhead Primary School, Rutherglen
Ward 12	55	Burgh Primary School, Rutherglen
Ward 12	64	St Columbkille's Primary School, Rutherglen
Ward 13	60	James Aiton Primary, Cambuslang
Ward 13	61	Loch Primary School and St. Anthony's Primary School, Rutherglen
Ward 14	56	Cairns Primary School and St. Cadoc's Primary School, Cambuslang
Ward 14	59	Hallside Primary School and Park View Primary School, Cambuslang
Ward 14	63	St Bride's Primary School, Cambuslang
Ward 15	27	David Livingstone Memorial Primary School
Ward 15	37	St Blane's Primary School, Blantyre
Ward 15	40	Calderside Academy and Nursery, Blantyre
Ward 15	41	Auchinraith Primary School, Blantyre
Ward 15	43	Kear Campus, Blantyre
Ward 16	24	Bothwell Primary School, Bothwell
Ward 16	31	Muredge Primary School and St. John the Baptist Primary School, Uddingston
Ward 16	38	St Bride's Primary School, Bothwell
Ward 17	42	Glenlee Primary School and Hamilton School for the Deaf, Burnbank
Ward 17	45	St Mary's Primary School, Hamilton
Ward 17	47	St Paul's Primary School, Hamilton
Ward 18	48	Neilsland Primary School and St Peter's Primary School, Hamilton
Ward 18	50	Townhill Primary School, Hamilton
Ward 18	51	Udston Primary School, Hamilton
Ward 19	25	Chatelherault Primary School, Hamilton
Ward 19	34	Our Lady & St Anne's Primary School, Hamilton
Ward 19	39	St Elizabeth's Primary School, Hamilton, Hamilton
Ward 19	52	Woodhead Primary School, Hamilton
Ward 20	26	Craigbank Primary School, Larkhall
Ward 20	28	Glengowan Primary School, Larkhall
Ward 20	29	Hareleeshill Primary School, Larkhall
Ward 20	30	Machanhill Primary School, Larkhall
Ward 20	32	Netherburn Primary School, Netherburn, Larkhall
Ward 20	35	Quarter Primary School, Quarter
Ward 20	36	Robert Smillie Memorial Primary School, Larkhall
Ward 20	44	Larkhall Academy, Larkhall
Ward 20	46	St Mary's Primary School, Larkhall

Example 20mph school drawings and photos

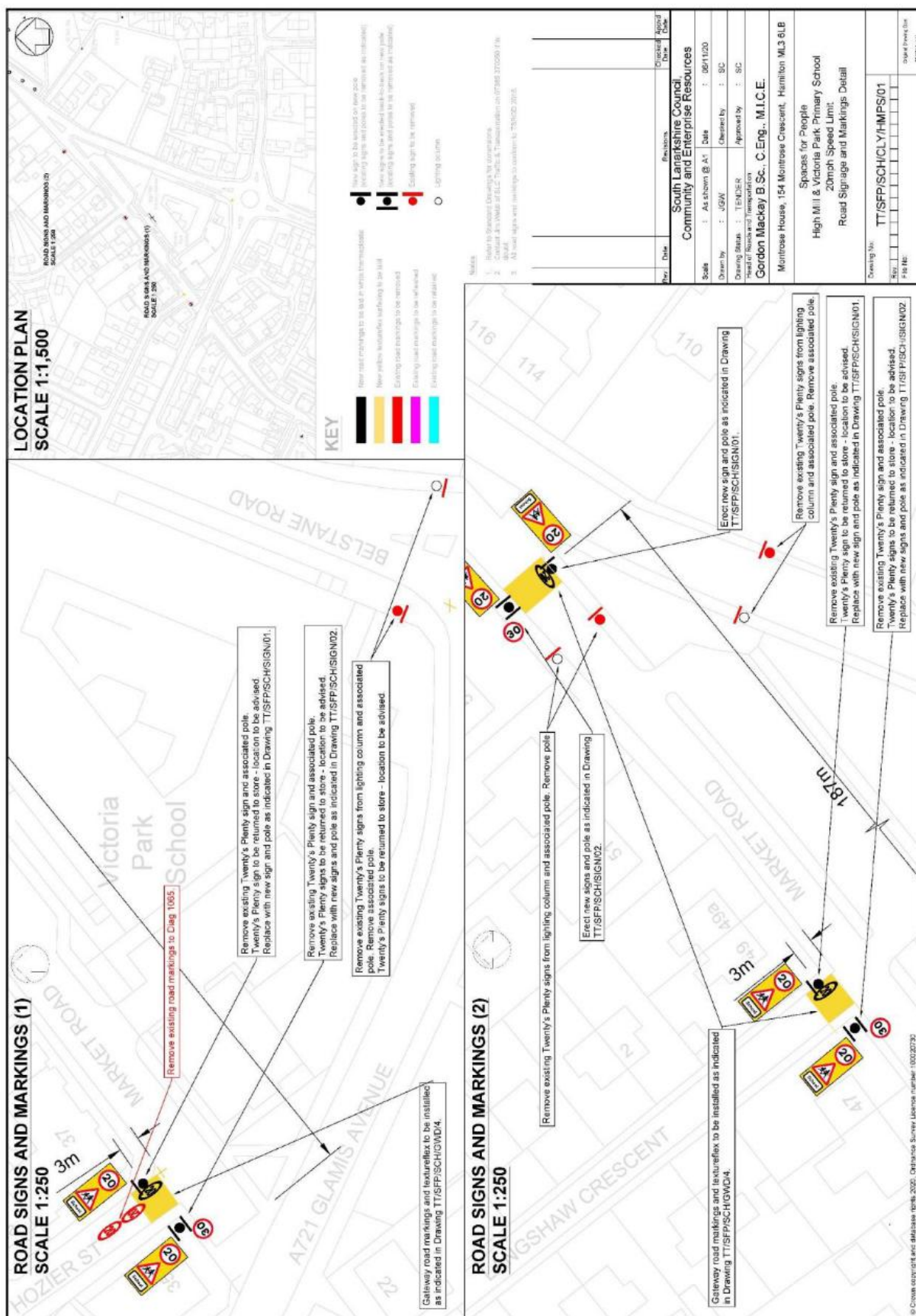
Example A - Gateway treatment with signs, dragon's teeth and coloured road surfacing including centre line.







Example B - Example of gateway treatment with signs and coloured road surfacing only.

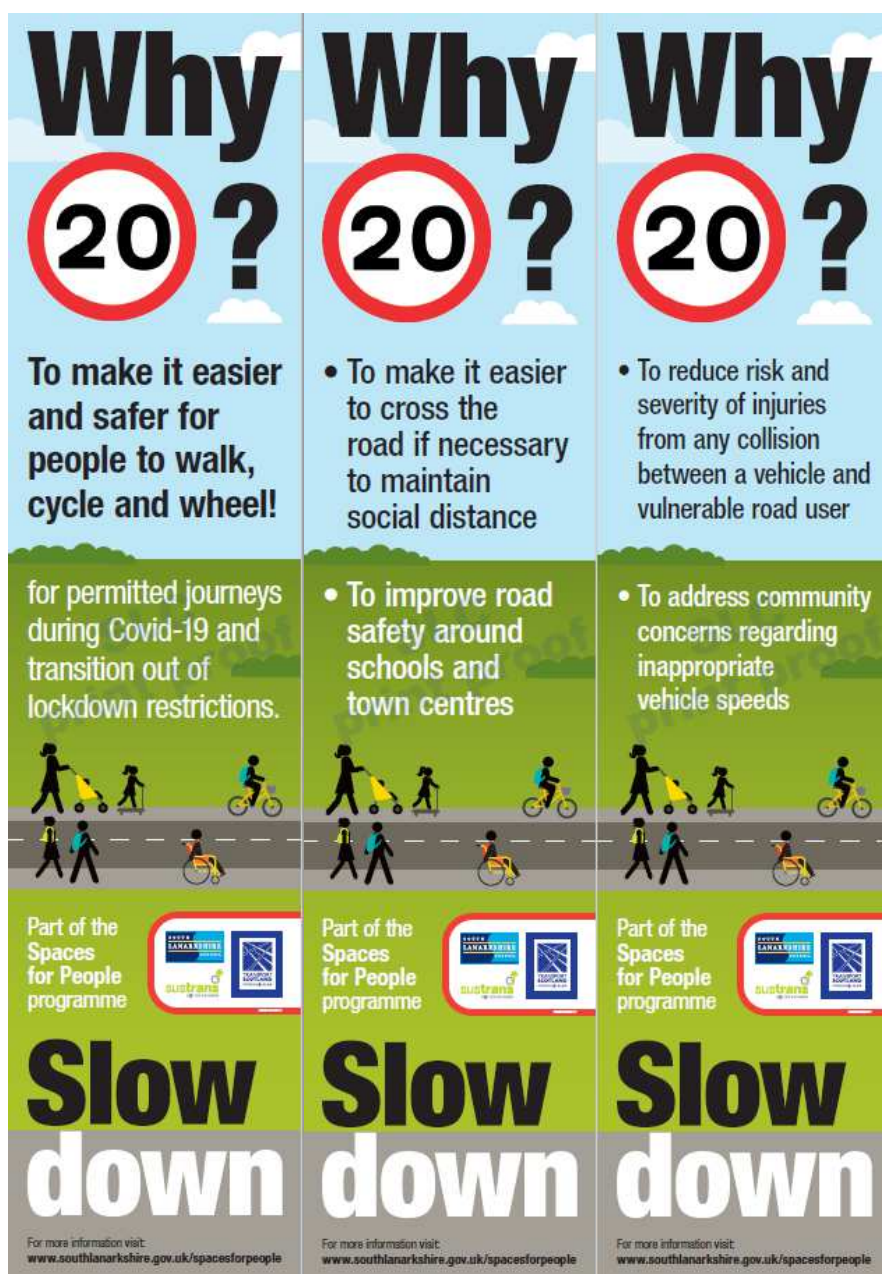


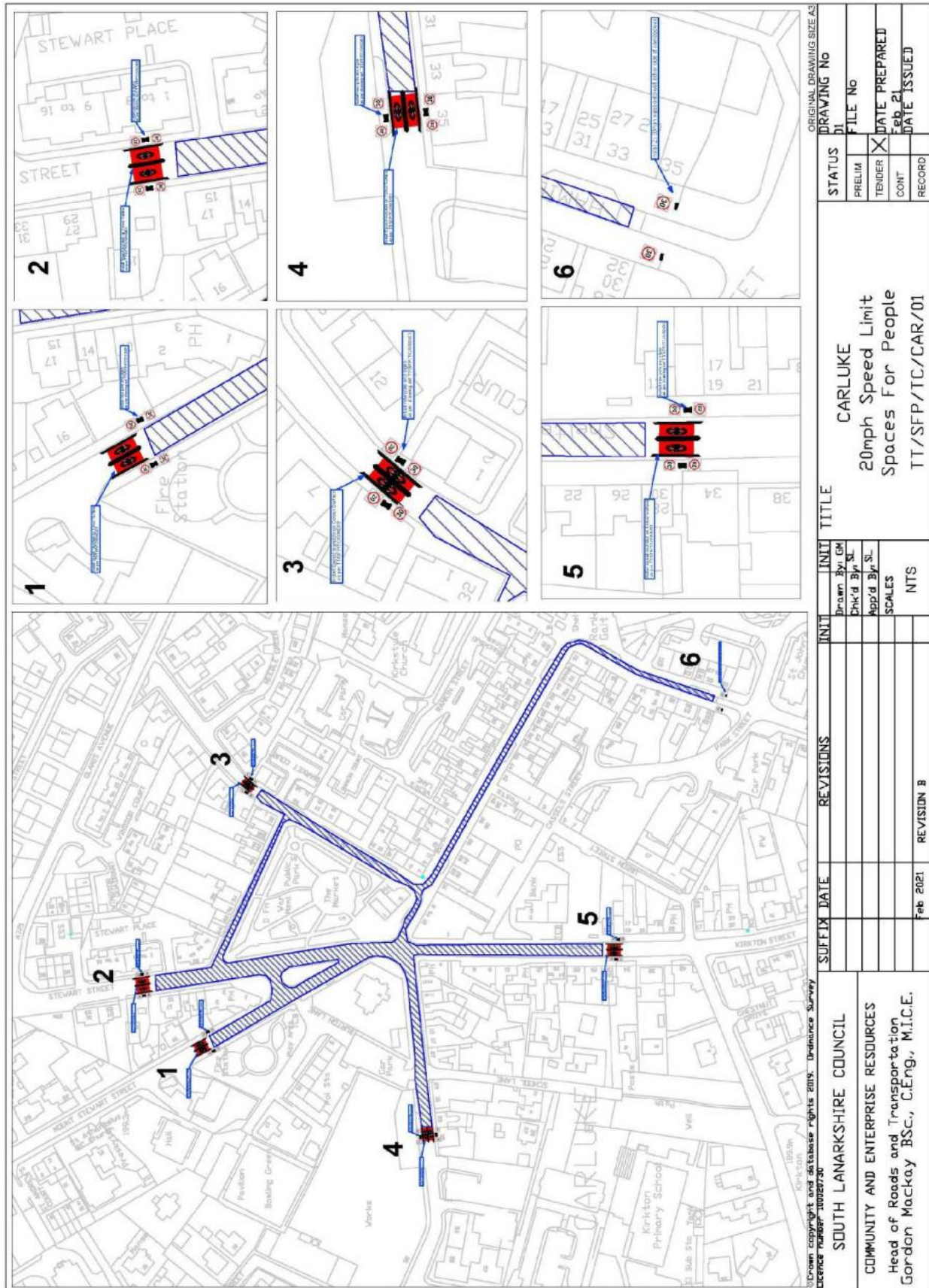


Example school banner



Example post wrap – for town centre or school use







** please note works shown above are incomplete with carriageway markings and white lining still to be installed as below.*

