

Participatory Budgeting in Clydesdale



LESMAHAGOW HIGH SCHOOL

An overview of the Participatory Budgeting process in our school

✧ **Enhanced School Experiences**
(Literacy/Numeracy Hub, Study Cafe and Lockers) ✧



Approximately £4288 was allocated to PB, which was 5% of the total PEF allocation for 22/23



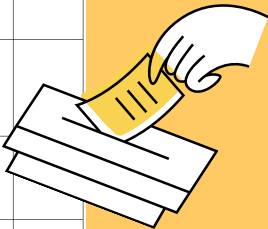
Consultation Process

A PB Pupil group was set up to discuss areas for improvements across the school. Following consultation with all stakeholders, the PB pupil group identified four themes for possible spend:

- Educational Enhancements
- Improved Access to Education
- Health and Wellbeing
- Enhanced School Experiences

Within each theme were a range of ideas for spend under each category. The winning category of spend for 22/23 following stakeholder voting was:
Enhanced School Experiences

Option	Details	Votes
1	Education (Includes areas such as external speakers, textbooks, new library books, new art supplies, study skills booklets, careers information, outdoor learning materials, revision packs)	
2	Access to Education (Includes areas such as ICT in school, stationery, school bags, career fair for younger pupils, sensory items in the nurture room, information posters)	
3	Health and Wellbeing (Includes areas such as sports competitions, breakfast club, sports clubs and kit, school water bottles, stress toys, first aid training, expanded Blues programme)	
4	School Experience (look at winter uniform, inspirational posters, outdoor social spaces for pupils, larger lockers, plants and art in the building, staff mini bus licences, subject related clubs, net over the 4G pitch)	



Voting Process

Pupils

Pupils voted during tutor time. Whilst 52% of pupils voted, the PB group are keen to increase this to nearer 100% next session. The PB group monitored the effectiveness of pupil voting this session and have ideas to adapt voting methods for pupils next session to improve voting numbers.

Parents

Voted via a Google Form

Staff

Voted via a Google Form

Rationale

Pupils reported the need for small, quiet and calm learning areas that can be accessed throughout the school day to support learning. A new Literacy and Numeracy Hub, and Study Cafe called "Coffee to 'Gow" were developed. The Literacy and Numeracy Hub are bookable learning spaces within the school, which provide quiet, calm learning environments to support learning and improve engagement and participation in school. "Coffee to 'Gow" is a welcoming study environment and an area where targeted pupils are supported in gaining their barista qualifications.

The PB Pupil group invested in lockers to support the school's Cost of the School Day (CoSD) policy, reducing the stigma and costs of new school bags. All pupils have access to a trolley of resources to ensure they have the appropriate materials they need for their classes, which they store safely in their locker.

Outcomes

By June 2023, targeted pupils will be accessing the new learning environments, leading to improved engagement at school.

By June 2023, pupils will report a reduction on the CoSD.

Measures

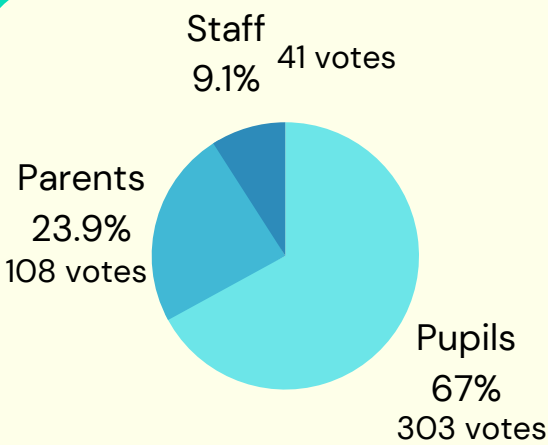
Pupil voice – consultation.
Reported reduction on the CoSD from key stakeholders.
Attendance registers/bookings for Literacy/Numeracy Hub and outdoor learning space

Parental Engagement

Parental engagement doubled from last year. The PB Lead had discussions with the Parent Council to gather ideas which further raised the profile of PB. Google forms were sent out via email and were further promoted using Twitter. Responses were quicker than last session. Parents were more aware of PB this session due to the success of last year.

Vote Turnout

52% of pupils voted for their preferred choice



Impact

Final impact to be measured in the summer term