



SOUTH
LANARKSHIRE
COUNCIL

 **VASLAN**
SOUTH LANARKSHIRE
Third Sector Interface

Social Enterprise

2023-2027

Strategy

flourishing | green | dynamic | equitable

SLC
print proof



flourishing | green | dynamic | equitable

Foreword	2
Introduction	3
Our Vision	4
About Social Enterprise	5
National Context	6
South Lanarkshire Context	7
Objectives	9
Priorities	12
Case Studies	14



Foreword

Social Enterprises help make South Lanarkshire a green, dynamic and equitable place for all.

We know the social economy has the ambition and power to transform the lives of our local communities, tackling inequalities, delivering local services and products, and contributing to the wellbeing and prosperity of our local economy. And at the same time reinvesting profits back into their social mission.

We've seen social enterprises delivering innovative responses to tackle climate challenge through food, reuse and recycling initiatives and addressing wider environmental impact through local production and supply chains. Social enterprise is, indeed, a force for good which we want to support and invest in.

To ensure our social economy continues to grow in confidence, potential and capability, we have prioritised our investment to enable the creation of sustainable social enterprises that thrive, grow, innovate, diversify, and support our local communities., because enterprise is what makes the social impact possible.

The 2021 Social Enterprise Census showed that South Lanarkshire had 177 social enterprises, an increase of 14 or 8.6% since the 2017 census.

Over 2015 to 2021 period, the number of social enterprises operating in South Lanarkshire increased by 34 or 23.7% which is greater than the increase experienced by Scotland as a whole, of 16.3%.

We aim to build on this and invest further in social enterprises start-up and existing businesses and ensure that we support our social economy to continue to innovate and grow.

Our social enterprises are motivated by a genuine desire to create a meaningful and lasting impact in our local communities, seeking to address social, economic, and environmental issues with limited resources – and often reliant on reducing grant funding which is not sustainable.

We also recognise and celebrate the diversity of the sector and its ability to respond in times of crisis as we have seen through the Covid-19, and the current cost of living crisis.

Our featured case studies with Clydesdale Community Initiatives, Juniors Play Café, R:evolve Recycle, Morphfit, Climate Action Strathaven, Social Enterprise in Schools and Healthy and Active East Kilbride, collectively demonstrate the range of supports and services, and the different sectors in which social enterprise operate.

This strategy has been designed in collaboration with our wider third sector, partners, and stakeholders. If we are to realise our multiple and far-reaching aspirations for social enterprise in South Lanarkshire, continued collaboration and partnership working with the social economy, key public sector partners, and the private sector, will be vital.

It is important that we also recognise the eco-system of support already available, and we will fully utilise this to ensure our social enterprises are empowered to shape their own ambitious future and deliver on our community wealth building approach.

Looking ahead to the future, the objectives set out in this strategy are designed to create opportunities and build strength and confidence for the sector to deliver more services, tackle inequalities; and build strength and confidence within our communities.

To drive forward these objectives, a newly formed SE Steering group will develop key actions that take the lead from the Scottish Government's three priorities for the sector, namely: stimulating social enterprise; developing stronger organisations; and realising market opportunity.

Our commitment to social enterprise is to deliver direct investment and continue to build on a sustainable social economy here in South Lanarkshire, which in turn will help deliver social value; more local services; and improved networking opportunities.



Councillor Robert Brown
Chair of Community and Enterprise Committee

Introduction

This new strategy will support the social enterprise sector in three priority areas: stimulating social enterprise activity, developing stronger organisations, and realising market opportunity. South Lanarkshire Council, working with Voluntary Action South Lanarkshire (VASLan) have co-produced this strategy following consultation with the sector and wider stakeholders. This document represents a next step in the journey to shape South Lanarkshire's agenda for social enterprise, building upon the excellent work which is already taking place.

This strategy is a first for South Lanarkshire and marks a fresh start for a partnership approach to further investment in local Social Enterprises.

A newly formed South Lanarkshire Social Economy Steering group (SESG) is the leadership group for developing and implementing this social enterprise strategy and associated action plan. SESG membership is made up public and third sector leaders and influencers from organisations that represent, work with, and provide business and capacity building support to the enterprising third sector and social enterprises in South Lanarkshire.

Steven Sweeney, CEO of Voluntary Action South Lanarkshire and Chair of SESG said, "Social Enterprises are a key enabler in the delivery of the community planning partnership's shared ambitions, around People, Place and Planet. Together, we can form a more flourishing, green, dynamic and equitable Social Economy".



Our vision

Our shared vision is to cultivate a vibrant, and growing social enterprise sector in South Lanarkshire which creates social and environmental benefits for all.

1 Aim

To grow the local economy, increasing local spend with the Sector and targeting support to our homegrown Social Enterprise

2 Objectives

- **Invest in a more balanced and prosperous economy for South Lanarkshire to:**
 - Deliver bespoke accelerator business support programme(s) to 45 organisations from 2022 onwards.
 - Package up additional small grant funding in 2023 to support up to 30 organisations to start up and increase trading.
 - Work with ESG partners and wider public, private and third sector stakeholders to promote out good practice examples and the sector generally, via case studies, social media, and news releases.
- **Deliver local services and Influence more local spend through effective use of procurement and robust local supply chains. We will:**
 - Broker engagement with Business Gateway and the wider business support offer to local organisations seeking to take on leasing or buying publicly owned buildings or land.
 - Explore options for involvement and sign up to the Scottish Government's Corporate Challenge and Buy Social programme managed by Social Enterprise Scotland.
 - Deliver a procurement workshop(s) for the sector.
 - Promote out the Council's new Community Benefit menu and tool.
- **Engage our young people so that they better understand social enterprise business models, and:**
 - Direct young people to the training and opportunities available through the Social Enterprise Academy, Business Gateway's Business start-up support.
- **Explore options for a South Lanarkshire Social Enterprise 'Shark Tank' schools initiative in 2024.**
- **Act on Climate, to target investment and support, we will:**
 - Deliver 2 bespoke sector workshops on Net Zero for up to 50 organisations.
 - Customise a digital solution and deliver wraparound support to a cohort of 30 social enterprises and,
 - Create a sector pathway with the Net Zero action planning tool.
- **Build strength and confidence within our communities, as part of our joint ambition to create thriving places we will:**
 - Commit to a place-based approach, targeting investment to 6 – 8 local community anchor organisations and support local social enterprise supply chains.
 - Invest directly in our South Lanarkshire Social Enterprise Network over the next two years in support of shared learning opportunities, networking, and peer support to 150 organisations over the lifetime of this strategy.
 - Test a South Lanarkshire Community Bond model and provide a range of financial incentives to encourage people to invest in local regeneration projects.

3 Priorities

- Priority 1:** Stimulating the social economy
- Priority 2:** Developing stronger organisations
- Priority 3:** Realising market opportunities

About Social Enterprise

Social Enterprise has a unique advantage in delivering local services, contributing to net zero and tackling inequalities

South Lanarkshire has a long tradition of socially responsible business, most notably Robert Owen, of New Lanark, a mill owner and social reformer who understood the importance of creating social good, as well as economic wealth. This tradition continued throughout Lanarkshire with the growth of the cooperative movement and to the present day with new forms of business in pursuit of a fairer and more equitable society.

While there is no legal definition for social enterprise in Scotland, it is broadly accepted that a social enterprise trades for the benefit of all or most members of a community, rather than the unlimited private gain of the few. Its primary objective is to achieve social and wider environmental benefit, and distinct from other third sector organisations, social enterprises aspire to financial independence through trading.

In Scotland, the 'asset lock' is the defining and essential feature of social enterprise and should be built into its business structure. The 'asset lock' sets out the requirement that upon dissolution of a company, profits are reinvested in the business or in the beneficiary community, and not distributed to private owners, shareholders, or investors.



National Context

Social Enterprises provide a positive influence on the world of commerce, representing a more ethical way of doing business

The Scottish Government's 10-year strategy (Scotland's Social Enterprise Strategy 2016- 2026) sets out the Government's commitment and ambition to developing and supporting the sector, recognising the vital role it plays in our economy, in civil society and in creating a fairer, more equitable and inclusive Scotland.

Social Enterprise make a significant contribution to Scotland's economy in most sectors including, Education, Health, Housing and Employability. With over 6000 social enterprises operating in Scotland.

Community Wealth Building (CWB)

CWB is a place-based economic development model rolling out throughout Scotland. This approach, within the wider frame of the wellbeing economy, is a model of economic development that over time can deliver thriving communities, a fairer society which are environmentally sustainable.

CWB looks to transform local and regional economies to deliver on our ambitions for inclusive growth and realise opportunities for more and better jobs, business growth, community owned assets and shorter supply chains supporting net zero ambitions.

Social Enterprise Scotland (SES)

SES is the national representative body for social enterprises in Scotland. A member-led organisation, SES champions and raises the profile of the sector, campaigning and influencing on key issues and policy. SES provides opportunities for social enterprises to network, connect, learn, and share experience and practice and supports initiatives to encourage and increase trading. SES engages and works with social enterprises, key stakeholders, and a wide range of partners, to develop and grow a collaborative movement that puts social enterprise at the heart of Scotland's future.

Social Enterprise Census

The biennial social enterprise census provides a snapshot of the overall make up and economic contribution of the sector. Scotland is recognised as a global forerunner in social enterprise research, policy, networks, and business support.

The latest 2021, census data alongside wider sector consultation has helped inform this strategy. See page 8.

Sustainable Procurement

Sustainable procurement lies at the heart of the Scottish Government's commitment to deliver inclusive economic growth, where social and economic interventions are considered with equal importance. With public spending worth more than £13 billion annually, there is huge potential for social enterprises to deliver more of Scotland's services and products, to the benefit of everyone.

That is why the Scottish Government has continued to invest in national tailored business support to the sector under the 'Just Enterprise' brand to market and deliver start-up, business support and leadership development services and crucially to work with enterprising third sector organisations to support both individual and consortia with procurement and technical tendering support.

Many businesses have already started to change their commercial procurement to increase social value and take responsibility for their total value chain impacts on people and the planet. An expanding number of firms in Scotland have systematically introduced social enterprises into their supply chain, partly prompted by the public sector duties and the legislative backing under the Procurement Reform (Scotland) Act 2014.

Supplier Development Programme (SDP)

The wider public sector, also invests in SDP to support small to medium enterprises, including social enterprise, with little or no experience of tendering through a programme of free expert training, support, and information to help organisations win work with the public sector and to grow their business.

This strategy sets out a new and inspirational plan to achieve our ambition for local social enterprises.

A key aim of the community wealth building approach is to influence spend towards local businesses, and social enterprises, to help grow and sustain local economies and promote positive social outcomes. The actions flowing from this strategy are designed to further develop and embed social enterprise business models and support the sector move towards greater financial independence, so that social enterprises can thrive, grow, innovate, diversify, and further support South Lanarkshire communities.

The South Lanarkshire Social Enterprise Network (SLSSEN) was recently launched as a platform to network and share ideas, provide peer support, encourage creative thinking, and recognise the contribution that the wider sector delivers to address local needs. Supported by VASLan, as the local Third Sector Interface, SLSSEN is the key networking forum for both established and aspiring social enterprises.

It is in this context that the Council is working with VASLan, SLSen and the wider sector to develop this first social enterprise strategy and action plan, informed by what our communities have told us, inherently linked to a range of new and /or refreshed council and partner strategies and plans across the Local Authority area.

Social enterprises are active across all sectors of the economy. Here in South Lanarkshire, the latest 2021 Census completed by 177 organisations, shows the largest fields of activity for social enterprises are for Health and Social Care (16%), Early Learning and Childcare (16%) and Arts and Creative Industries (15%).

Four out of ten social enterprises trade locally, whether in their local community (25%) or within the local authority area (15%).

A significant number of South Lanarkshire social enterprises have a wider reach, either to neighbouring local authority areas (35%) or Scotland-wide (25%).



Social Enterprise in South Lanarkshire

- key facts Census 2021

177 social enterprises



75% Led by women



78% Sell to direct consumers



26% Located in rural South Lanarkshire



£35m GVA added to South Lanarkshire economy



1,280 Full time equivalent (FTE) employees



£119m Net worth of South Lanarkshire's social enterprises



63% Earned income from trading activities



92% Pay at least the Real Living Wage to all employees



59% Self-sufficiency as a proportion of income converted by trading



20% Won a public contract within the last 12 months



£64m Total annual income of South Lanarkshire SEs

Our shared vision is to cultivate a vibrant, and growing social enterprise sector in South Lanarkshire which creates social and environmental benefits for all.

Objectives

We realise the impact of social enterprises as a powerful force for good. Working with the public, private and third sector partners, our commitment is to target the wider business support and investment, ensuring social enterprises continue to grow in confidence, potential and capability. This partnership approach will create the right infrastructure for new models of business to emerge, such as social enterprises because enterprise is what makes the social impact possible.

South Lanarkshire is in a good starting place, with our social enterprises already working directly to reduce the region's social, economic, and environmental impact through innovative care, food, energy, tourism, and recycling initiatives.



Invest in a more Balanced and Prosperous Economy for South Lanarkshire

With a commitment to delivering social impact, social enterprises lead the way in harnessing the belief that commercial activity has a responsibility beyond turning a profit.

By better demonstrating social impact and raising awareness of the sector here in South Lanarkshire, the objective is to, target and bring in more investment, generate a greater understanding of the importance of social enterprise, making the sector more visible, valued, and accessible to communities.

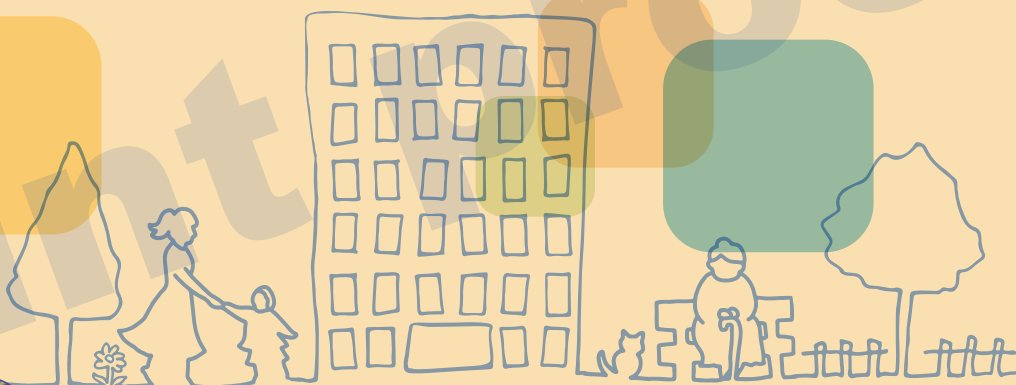
There are some locations in South Lanarkshire, particularly local towns and villages, where there are clusters of organisations who play an important role in delivering inclusive economies. By creating the right conditions in local towns and neighbourhoods, we can further support the enterprising third sector to collaborate, share space and diversify to provide a better offering for users.

Deliver Local Services

Social Enterprises are motivated by core aspirations to improve our personal, collective, and environmental wellbeing. A desire to live better, more sustainable lives, means consumers are increasingly making ethical choices on where to shop and what products to purchase. Our Social enterprises, ethical businesses, credit unions, housing associations, community interest companies, and development trusts can deliver enhanced brand awareness and reputation for customers and consumers, particularly as these enterprises are motivated by core aspirations to improve personal, collective, and environmental wellbeing.

The 2021 survey results reinforce two key trends. First, the overall reduction in the share of social enterprises doing business with the public sector (down from 60% in 2015 to 50% in 2021). Second, the increase in social enterprises serving the general public (up from 68% to 82%).

This strategy recognises social enterprises as a vehicle for localised service delivery and community-led regeneration.



Engage Young People

Young people bring progressive values and new expectations about society, business, and life. For us, the social economy and social entrepreneurship an integral part of preparing young people for the world of work. Underpinning this approach is to ensure young people better understand social enterprise business models and ethos by giving them the opportunities to set up and grow social enterprises in their schools and communities. By raising awareness of the sector, we will promote opportunities and careers to young people working in and starting up new social enterprise helping young people to fulfil their potential, develop key employability skills, whilst aspiring to affect ongoing social change in their communities and beyond.

Act on Climate

South Lanarkshire's social economy is ideally placed as a sector to play a leading role towards Net Zero in that social enterprises already consider the triple bottom line of social, economic, and environmental impact.

With this additional investment and support, organisations will be better equipped to make Net Zero a reality for themselves and the benefit of communities they work with. The actions linked to this strategy seek to build knowledge and support for social enterprise to play an inspirational and leading role in delivering Scotland's Net Zero transition by 2045 in a fair and just way.

Climate challenge will not affect everyone to the same degree, and we want an approach that supports the sector along the journey, championing social justice and reducing the effects of poverty supported through improved digital, sustainable and green infrastructure.

Build Strength and Confidence within our Communities

South Lanarkshire is already a great place to live, work and visit. As a partnership, the Social Economy Steering group members, want to do more, which is why we are further investing in local social enterprises to ensure that they thrive and grow. This fits with our ambition to create thriving places where people can access local goods and services on foot or via public transport.

Local community anchor organisations play a key role in supporting us develop small, locally owned enterprises which retain wealth in the local economy, and we are committed to this place-based approach, working with partners to develop robust local supply chains of social enterprises likely to support good employment and retain work locally.

We will also look to maximise community benefit outcomes for social enterprises, strengthening collaboration and social impact across the public and third sector which will enable the local economy to further grow and develop.

Influence more local spend and robust local supply chains

Social enterprises offer public bodies an opportunity to practice more socially, environmentally, and economically responsible procurement. It is a key requirement for public bodies to evidence how its procurement processes have facilitated the involvement of small to medium enterprises, third sector and supported business under the sustainable procurement duty as outlined in the Procurement Reform (Scotland) Act 2014.

So, for our enterprises who want to become tender ready and bid for contracts, we will strengthen and target our existing business offering including that which is offered through the Supplier Development Programme, Lanarkshire Business Gateway and the wider ecosystem, supporting the local economy to grow effective use of procurement to benefit local communities.

And by working together with other large public, private and third sector partners we will embrace progressive procurement approaches in South Lanarkshire, to develop dense supply chains and keeping more of our activity and spend local.



Priority 1

Stimulating Social Enterprise

Working with public, private and third sector partners we will generate awareness and greater understanding of the social economy and encourage start up social enterprises and growth here in South Lanarkshire.

We will:

- Target business support to grow social enterprises (SEs) and improve sustainability of the sector throughout South Lanarkshire.
- Work with partners to support organisations which offer volunteering opportunities as a route to employment.
- Pilot a community bond to unlock other sources of local investment to enable communities to thrive and provide a bond guarantee that will give local people confidence to invest.
- Invest in social enterprises and enterprising third sector organisations to generate more of their own funding through trading.
- Work with partners and support the development of co-working spaces where social entrepreneurs can collaborate with others to deliver social innovation.
- Maximise opportunities for young people to learn about, social enterprise business models, and opportunities to set up and grow social enterprises in their schools and communities.
- Invest in the development of the South Lanarkshire Social Enterprise Network (SLSSEN).
- Deliver a Net Zero (NZ) pilot, building capacity of social enterprises and developing the tools to progress further along their NZ journey.

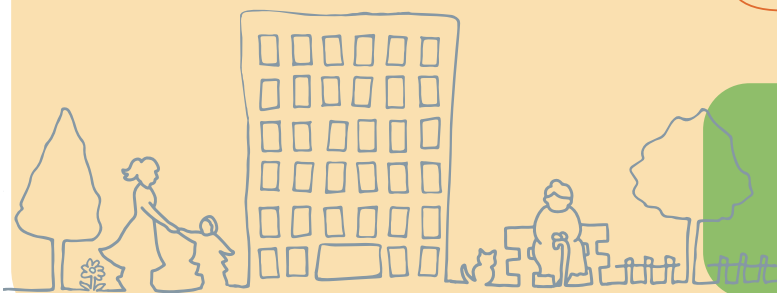
Priority 2

Developing Stronger Organisations

We will target capacity building and the wider business support offer to social enterprises, so that organisations can access the resources, knowledge and support needed and achieve greater potential.

We will:

- Draw on the expertise through business support, including our business gateway contract to encourage social enterprises to consider how they can diversify their income and explore blended finance models.
- Build on existing knowledge of market supply through further analysis of the National Social Enterprise Census 2021 data to identify new opportunities for local business to grow.
- Develop a wider third sector business support offer out to enterprising third sector organisations.
- Increase networking opportunities, peer to peer support and knowledge exchange for the sector.
- Invest in the sector and package up new funding for social enterprises to test new ideas, support trial trading, make better use of technology and support entrepreneurship.
- Build on the strength of collaboration within the sector and encourage and support consortia development.
- Work with private sector and partners, to maximise community benefit outcomes and encourage our businesses to volunteer with and mentor social enterprises.
- Explore how we can best support social enterprises to work together to create a culture of self-evaluation and impact measurement.



Priority 3

Realising Market Opportunity

The SESG partnership ambition is to increase the number and range of social enterprises directly involved in selling to consumers, the public and private sector, and to increase supply chain opportunities in the delivery of local products and services.

We will:

- Promote the Living Wage and Fair Work practices throughout our social economy to improve the prospects and wellbeing of our communities.
- Encourage partnership and consortium development in the sector and build capacity of social enterprise to compete for contracts.
- Continue to develop how our wider third sector business support offer can help strengthen the social economy.
- Encourage greater collaboration between the public and third sector local service delivery offering as an output of the Community Asset Transfer process.
- Expand the capability of local social enterprises to bid for public sector contracts, brokering support from economic development and procurement including the Supplier Development Programme and Just Enterprise
- Work with our community anchor institutions to explore further opportunities for more local spend through the local social enterprise supply chain
- Maximise the Council's community benefit outcomes.

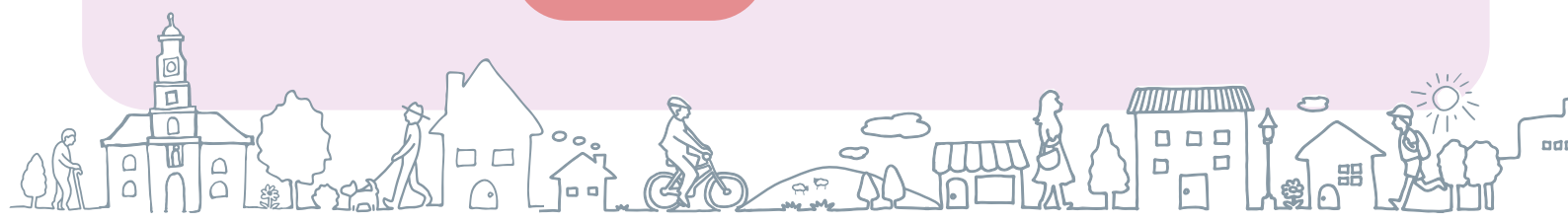


What does success look like?

This strategy, which is aligned with the priority outcomes in South Lanarkshire's Community Wealth Building Strategy and Third Sector Strategy, takes its lead from the Scottish Government's three priorities for the Sector: Stimulating Social Enterprise; Developing Stronger Organisations; and Realising Market Opportunity.

By delivering on this Social Enterprise Strategy, we will contribute to key priority outcomes, using the following key indicators:

- 2021 South Lanarkshire baseline established for Turnover and GVA (data from the 2021 SE National Census).
- Increase in the number of social enterprises based in South Lanarkshire, (measured biannually via the SE National Census data).
- Increase in the number of social enterprises becoming 'tender ready'.
- Increase in the number of supply chain opportunities promoted out to local social enterprises.
- Additional investment into development and growth of the sector, including instances of targeted business support.
- Increase in the number of social enterprises further along the journey to Net Zero
- Resourcing the South Lanarkshire Social Enterprise Network and opportunities for the sector to network, collaborate and deliver peer support.



Case Studies

Clydesdale Community Initiatives

Clydesdale Community Initiatives (CCI) based in Lanark, was established in 2002 to support people, facing barriers to inclusion, to contribute to their community, through developing skills and gaining real work experience.

Since 2015 the enterprise has operated from Langloch Farm. The business has evolved and developed to embrace and showcase the work of the Charity, to include a Tea Room, Gift Shop, wood craft workshop and Nature Play Areas, opening to the public in 2019.

Langloch Farm produces a range of products including outdoor furniture and garden items to beautiful botanics such as lip balms, soaps, and sugar scrubs.

The woodcraft workshop not only supplies products to the farm gift shop, but it also carries out projects, both onsite for CCI and offsite for customers such as South Lanarkshire Council and the NHS.

Farm Botanics enterprise products are made on site. Most of the ingredients for the Botanics range are grown and processed at Langloch Farm, with additional organic ingredients thoughtfully and ethically outsourced.

This award-winning social enterprise model empowers individuals to learn new skills, improve their health and wellbeing and most importantly see themselves (and be seen by others) as active members of their community.



Heart of Africa

Heart of Africa UK, supports and promotes health advancement in Scotland and Africa, through their healthy eating and cooking programmes. Currently catering for weekly lunch club members, working in partnership with Larkhall and District Volunteer group.

The objective of the charity is the prevention or relief of poverty, supporting and promoting health advancement in Scotland and Africa, through their healthy eating and cooking programme.

Their activities are informed by comprehensive empirical studies and high-quality data evaluation with the aim of promoting equality and diversity, and integration through arts, food, and community activities. Heart of Africa has recently engaged with our business support offer through Lanarkshire Business Gateway to grow their impact and diversify their income.



Juniors Play Café

This award-winning play café offers for families with young children a chance to meet and chat whilst the children enjoy soft play and access imagination play. The facility, based in Hamilton, also hosts a fully accessible café, where a selection of food and home baking is available.

The soft play which has been specially designed to encourage imagination play and to enhance the social and physical development of children, also caters for children with additional support needs.

The enterprise also delivers programmes including baby massage classes for babies six weeks to six months to deliver benefits which promote sleep, aid digestion and address issues such as colic.



R:evolve Recycle

R:evolve Recycle was established in 2015 in response to the concern for the increase in 'fast fashion'. 100% of items donated, are reused, or recycled through multiple pathways including the clothing bank, workshop programme and links with local charities.

Based on old fashioned concepts of swapping, sharing and mending clothes, the project operates two high street swap shop boutiques, offering a tangible platform for people to engage in the circular economy in South Lanarkshire.

Wee Jinty's Eco Haberdashery and R:evolve thrift + gift enterprises, all increase the value of end of life, vintage and second-hand clothing, developing a sustainable income stream which is reinvested to keep the swap shops free to customers. The enterprise also offers a retail platform for local artists and makers who share the same social purpose.

Since its inception R:evolve Recycle have saved over 110 tonnes of textiles, bringing them back into circulation and away from landfill through social enterprise, sustainable pathways and partnerships.

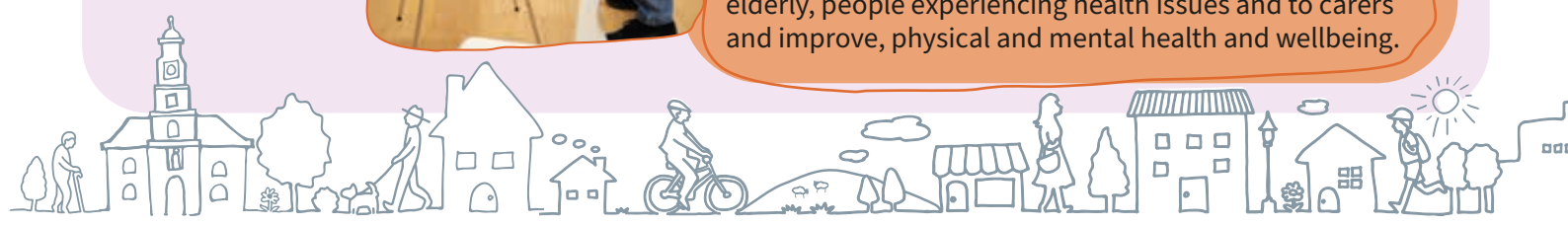


Morphfit

The MorphFit Gentle Movement Project have been operating since 2021 and recently was recognised with the award for Enterprise and Innovation at the 2022 Voluntary Sector (Voluntary Action South Lanarkshire) awards. Their programme offers fully funded online Gentle Movement Exercises for The Elderly, all those who are shielding or in Isolation and to anyone who has acknowledged health issues.

Clients include Sense Scotland, The Beatson, The Haven, MS Society, Bothwell Medical Centre, and The Lanarkshire Carers Association. Morphfit's main aim is to deliver unique online services back into local communities, helping maintain mobility, fitness and health and help reduce social isolation.

The Morphfit Gentle Movement Project Ltd is actively building partnerships to deliver online services for the elderly, people experiencing health issues and to carers and improve, physical and mental health and wellbeing.



Climate Action Strathaven

Climate Action Strathaven aims to raise awareness about the reality of the impacts of climate breakdown and work towards a more sustainable future for the people of Strathaven and surrounding areas, by bringing communities together to act on and mobilise resources locally.

Established in 2019, the enterprise has in its first year of becoming a charity, opened a pop-up cycle repair facility at the Strathaven Town Mill Arts and Heritage Centre and repaired over 350 bikes, (they currently operate a low-cost weekend bike repair shop and have a range of pre-loved bikes for sale).

They also published a sustainable Strathaven manifesto and worked with local groups on growing and allotments to develop sustainable food options.

Members have gone on to set up a cargo-club delivering goods locally in a sustainable way. Avondale Cargo Club are also partnering with two branches of Boots Pharmacy, to offer a low-cost, carbon-free prescription delivery service to residents of Strathaven and the surrounding areas.

Through their partnership with Karshare UK, they have established a car club, which currently has three vehicles listed with many more expected in the coming weeks.



Healthy and Active East Kilbride (HAEK)

Ever evolving since it began in 2003, HAEK main aim is to help improve the quality of life, mental and physical health and overall wellbeing of the people and communities in East Kilbride.

The Meeting Place is their Community Hub with a community café offering a wide range of activities, information, services, and support to the people of South Lanarkshire and is located within East Kilbride Town Centre.

The enterprise operates a minibus service, collecting older people to and from home and East Kilbride Town Centre and is supported by their shop mobility services. HAEK provides a range of health and wellbeing classes and activities including Art, Mindfulness and Tai Chi etc. They work in partnership with the NHS, South Lanarkshire Council, and other key public sector and third sector partners supported by a strong team of volunteers.



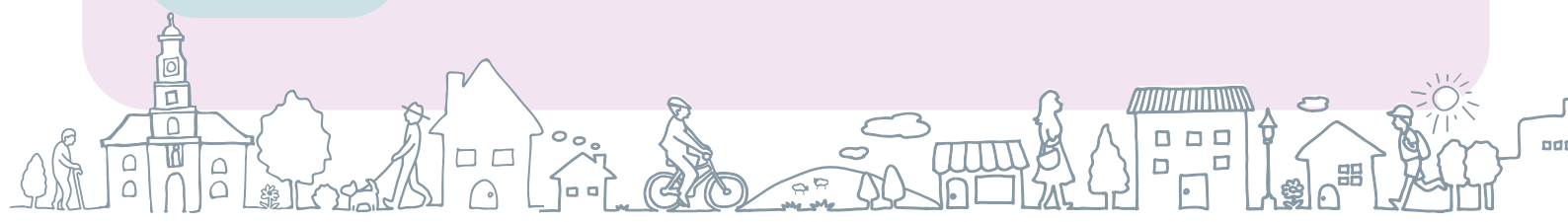
Promoting Social Enterprise in our Schools

Supporting young people across Scotland to set up social enterprises that solve the issues that matter to them while developing key skills for the future is something that we are all passionate about. Working with the Social Enterprise Academy to deliver workshops and encourage the next generation of social entrepreneurs, here is a flavour of just some of the enterprises in primary and secondary schools taking place across South Lanarkshire.

Greenhills Primary – Their social enterprise project is called B4. It supports the provision of positive mental health activities in school and the pupils are selling bangles and bracelets that can help with anxiety.

St Andrews and St Brides – Their social enterprise project 'The Kitroom' looks to provide used football boots at an affordable price while also helping to tackle climate change by stopping waste. Their enterprise was inspired by an S3 pupil noticing how quickly he was growing out of football boots before they were even close to worn through. This school won the Sustainable Fashion Dragons' Den.

Chapelton Primary – Their social project is called 'one small step'. Inspired by a significant loss at the school this brilliant group of pupils have created a range of products promoting positive mental health. Chapelton won the Financial Education Dragons' Den.





www.southlanarkshire.gov.uk

If you need this information in another language or format,
please contact us to discuss how we can best meet your needs.
Phone: 0303 123 1015 Email: equalities@southlanarkshire.gov.uk



Printed on eco-friendly
paper – please recycle

Produced for Community and Enterprise Resources by Communications and Strategy. 063715/May23