

1	Introduction	2
2	Context	3
3	Appendix 1	4

Introduction

Background

- 1.1** Following the adoption of the South Lanarkshire Local Development Plan 2 (SLLDP2) in April 2021 the Council has begun preparation of a series of supporting guidance to support the plan. Section 9 of the Planning (Scotland) Act 2019 has removed the ability of Planning Authorities to prepare new statutory Supplementary Guidance. Circular 6/2013 – Development Planning states that planning authorities may issue non-statutory planning guidance to provide detail on a range of subject areas. This form of guidance does not form part of the development plan. However, approval and adoption of it by the Council gives it formal status, meaning that it will be a material consideration in decision making. Planning guidance can be updated as required and without the need for approval by Scottish Ministers.
- 1.2** A number of Supplementary Planning Guidance (SPG) documents will be prepared to support the policies in SLLDP2 and provide guidance to developers at an early stage on what will be acceptable so that it can be factored into proposals. In addition this SPG has been prepared specifically to formalise the boundaries of the Local Nature Reserves that are identified in SLLDP2. The context for this is set out in paragraph 6.12 of the Plan. This draft Supporting Planning Guidance was approved by the Planning Committee of South Lanarkshire Council at its meeting on 21 June 2022.
- 1.3** In parallel with the LDP process detailed discussion took place with NatureScot to progress the formal declaration of the LNRs under Section 21 of the [National Parks and Access to the Countryside Act 1949](#) (as amended). NatureScot endorsed the declaration of the LNRs in September 2021 and this was approved by the Council's Planning Committee on 5th October 2021. The formal declaration of the LNRs was concluded in January and February 2022.
- 1.4** The SPG does not introduce new policy or set out any detailed requirements for developers. The Local Nature Reserves have previously been subject to consultation through the LDP process. There is therefore no requirement for further consultation on this SPG. In addition it is not

required to undergo a strategic environmental assessment, habitats regulations appraisal or an equalities impact assessment as these were carried out during the preparation of SLLDP2.

Local Nature Reserves policy

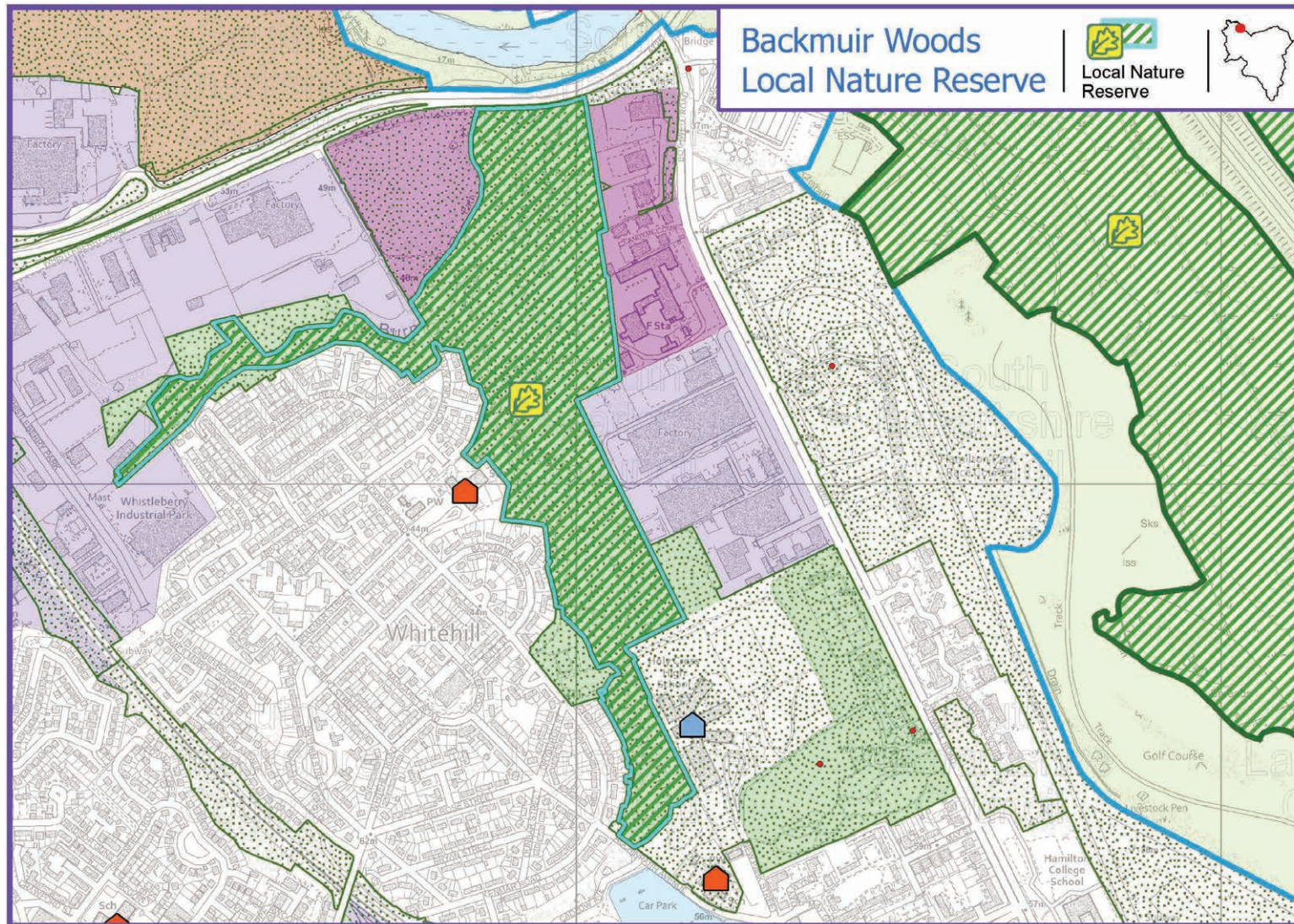
- 2.1** During the preparation of SLLDP2 the provision of 16 new LNRs was proposed together with an extension to the existing Langlands Moss LNR. In turn they would supplement the approved LNR at Morgan Glen in Larkhall.
- 2.2** At that time precise boundaries for each of the LNRs could not be established. As a result indicative boundaries were shown as proposals on the relevant settlement maps in the LDP Proposed Plan that was subject to consultation in 2018. As a result of the representations received a number of minor changes were made to the LNR boundaries. These changes were accepted by the Reporter who carried out the formal Examination of the Proposed Plan, and no recommendation requiring any further changes was made. Nevertheless a number of land ownership issues were still being resolved when the plan was adopted by the Council in 2021. The detailed boundaries were therefore not shown on the settlement Plans at this stage, but instead the locations were shown indicatively with symbols. To address this matter paragraph 6.12 of SLLDP2 states that "The detailed boundaries of the LNR's will be defined through the preparation of management plans for these areas and included in Supporting Planning Guidance"
- 2.3** The Local Nature Reserves in South Lanarkshire are listed in Table 6.1 of SLLDP 2. The plan contains two policies in relation to local nature reserves. Policy 14 - Natural and Historic Environment in Volume 1 is the overarching policy for all natural and historic environment designations whilst policy NHE 15 - Local Nature Reserves is the more detailed policy specifically relating to LNR's. Any development activity within or potentially affecting LNR's must accord with these policies and also take account of the individual management plans for each LNR.
- 2.4** Each site has a draft management statement which gives information on why it is important, and the aims for the site in the future. These documents pull together information about all the sites and give an update on the work done to date, community involvement, and plans for the

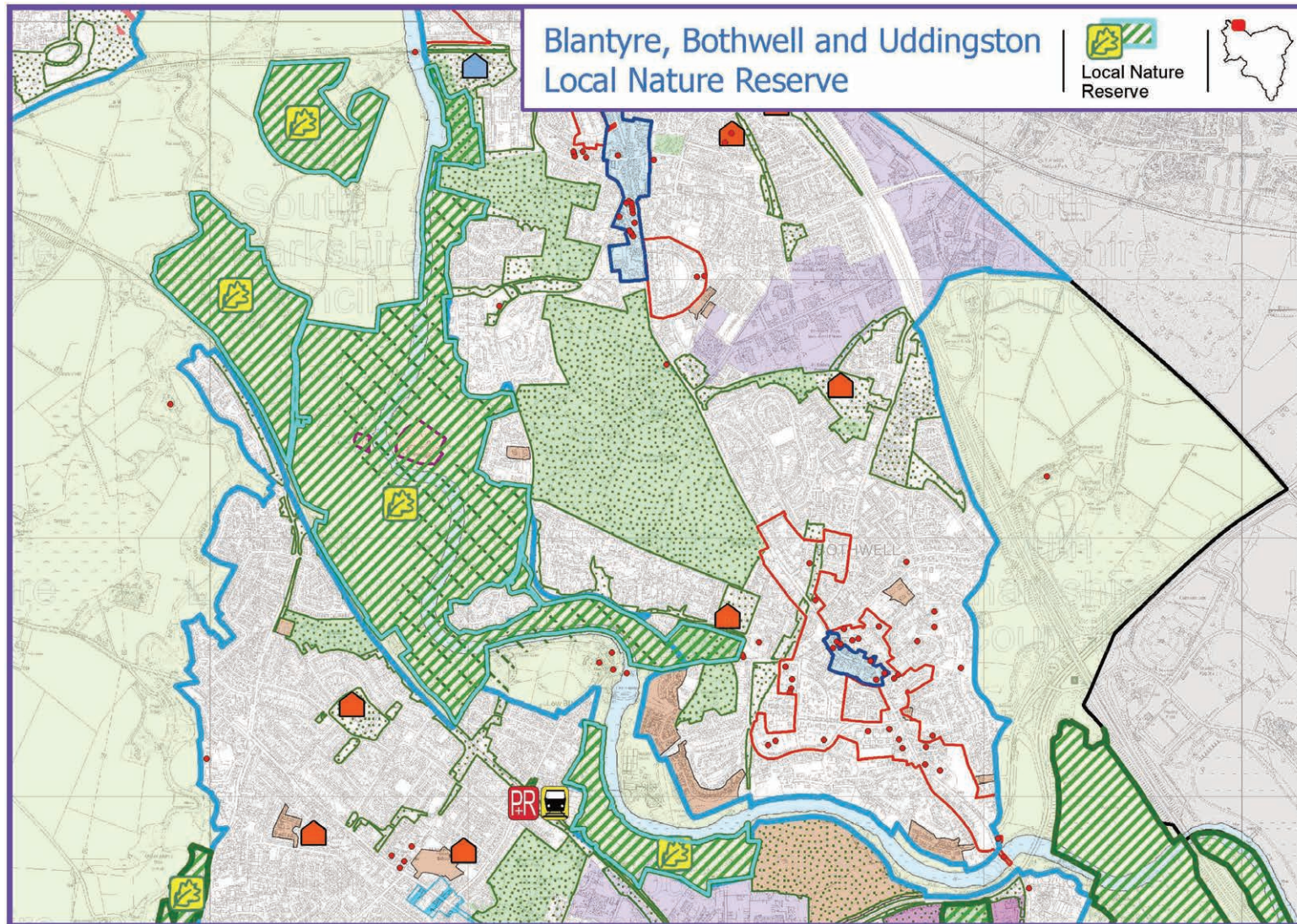
future. The draft Management Statements which have been approved are available [on the council website](#).

Local Nature Reserve boundary maps

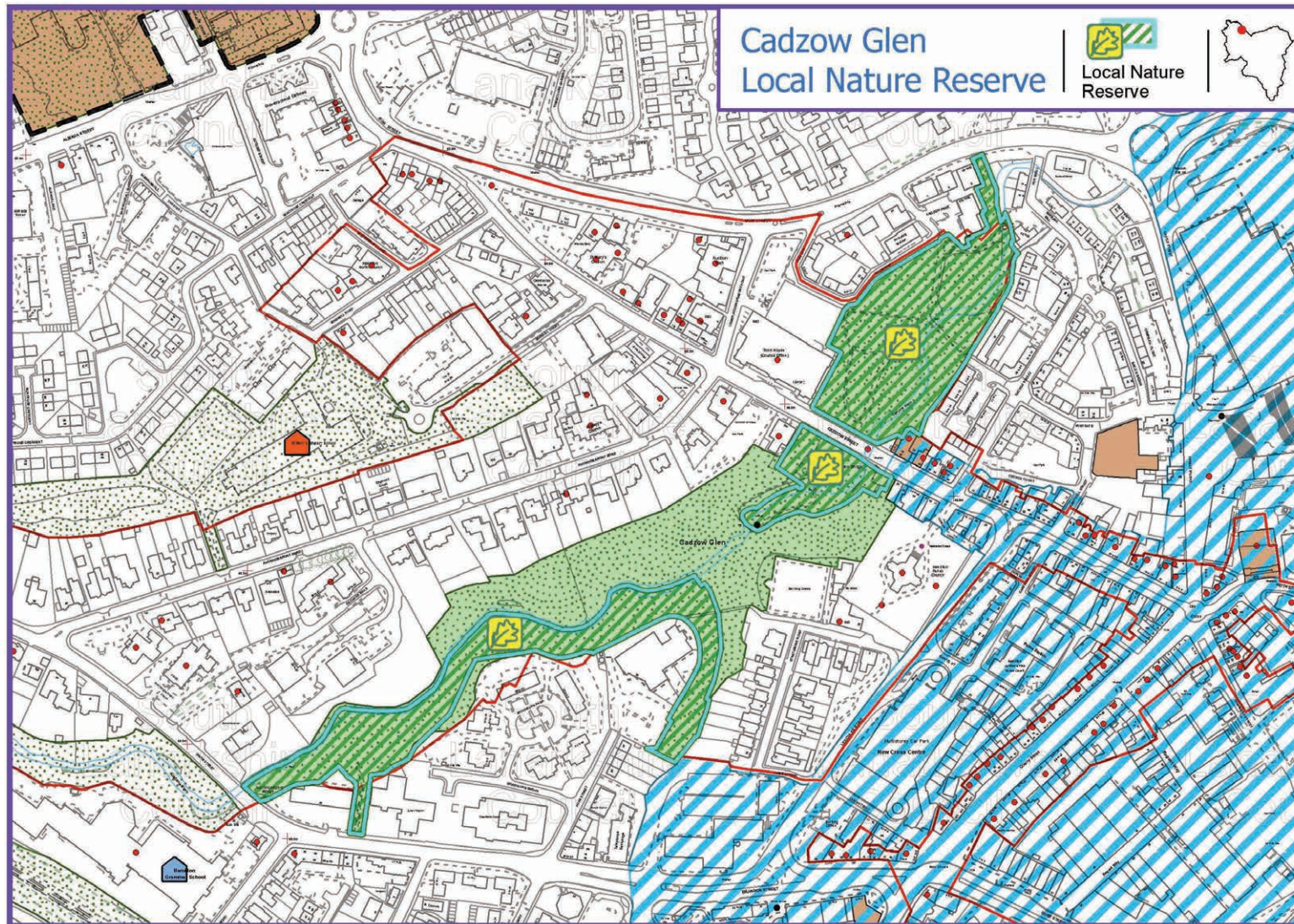
- 2.5** Appendix 1 contains the detailed boundary maps for each Local Nature Reserve as approved by the Council. The maps also show the Local Development Plan policy context. [Click here to see the LDP2 Settlements map Key](#)

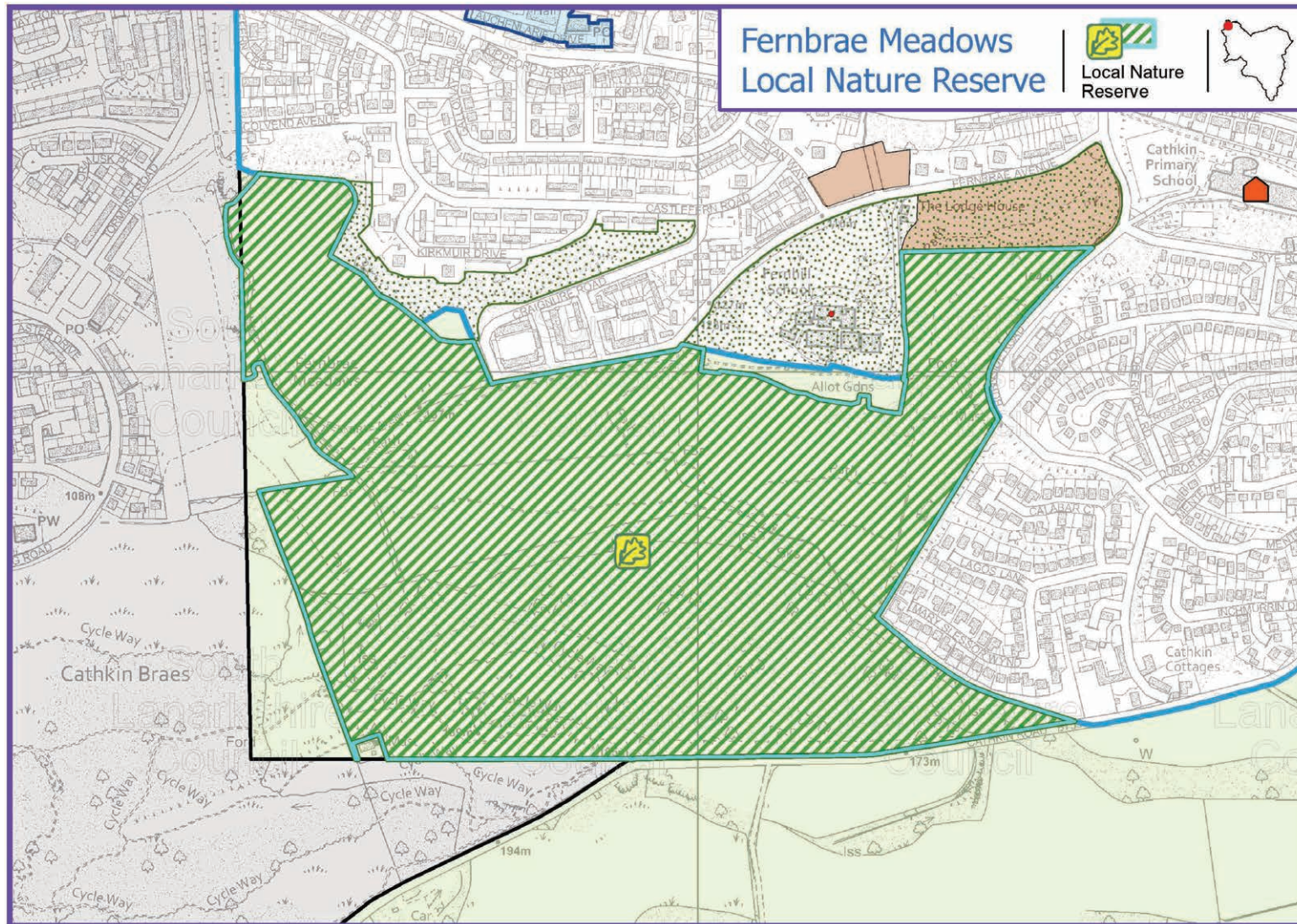
Appendix 1



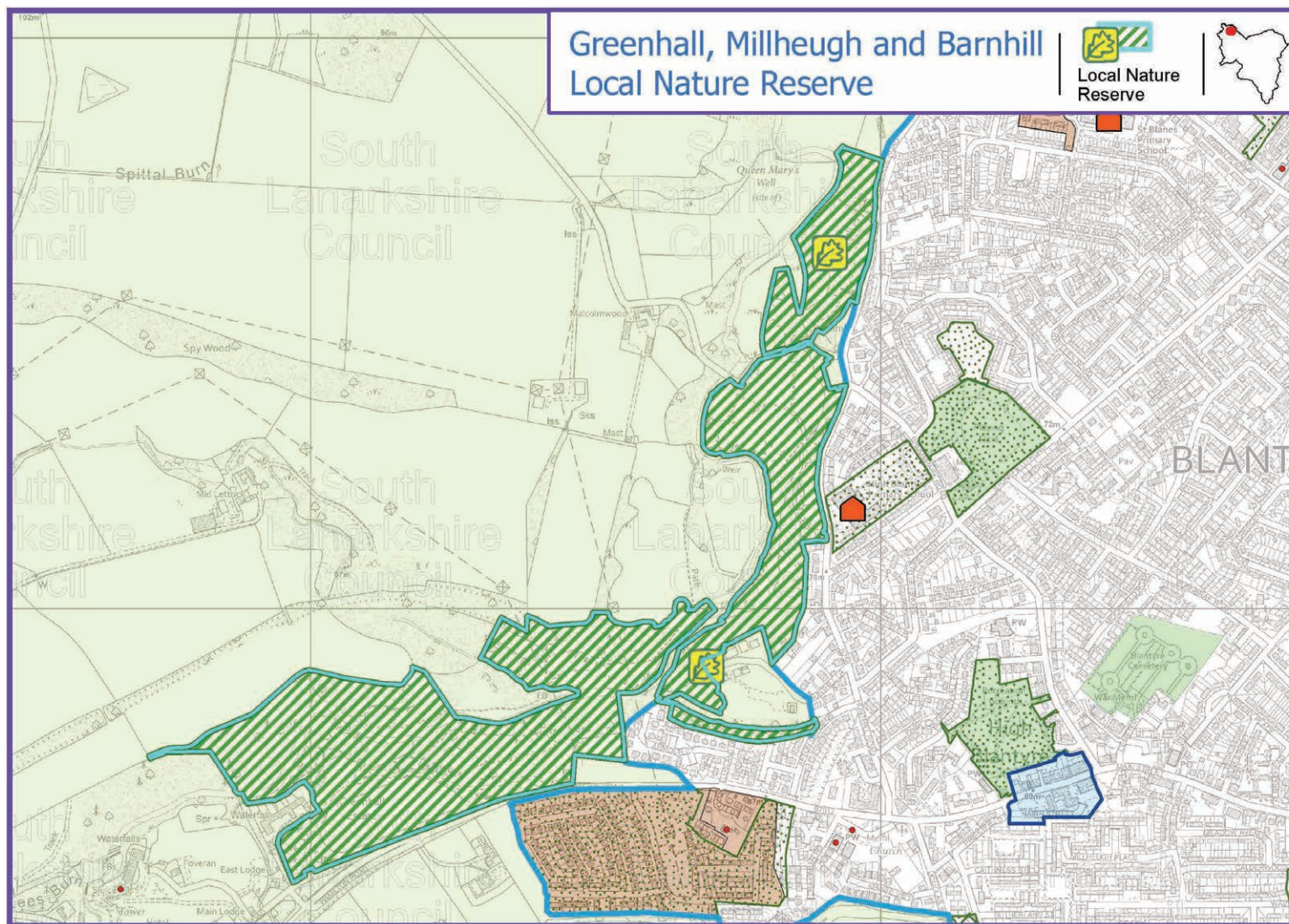


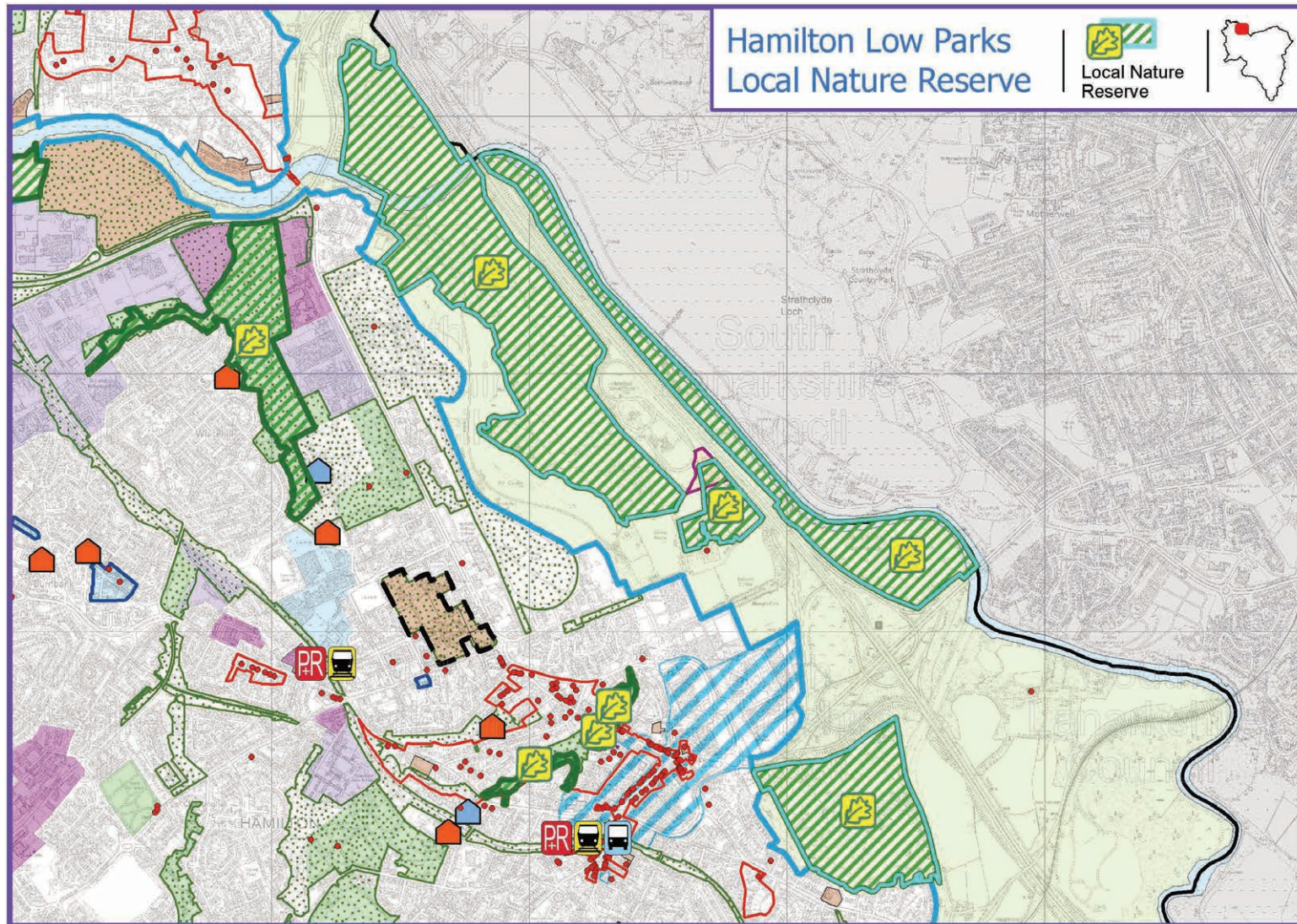
Appendix 1



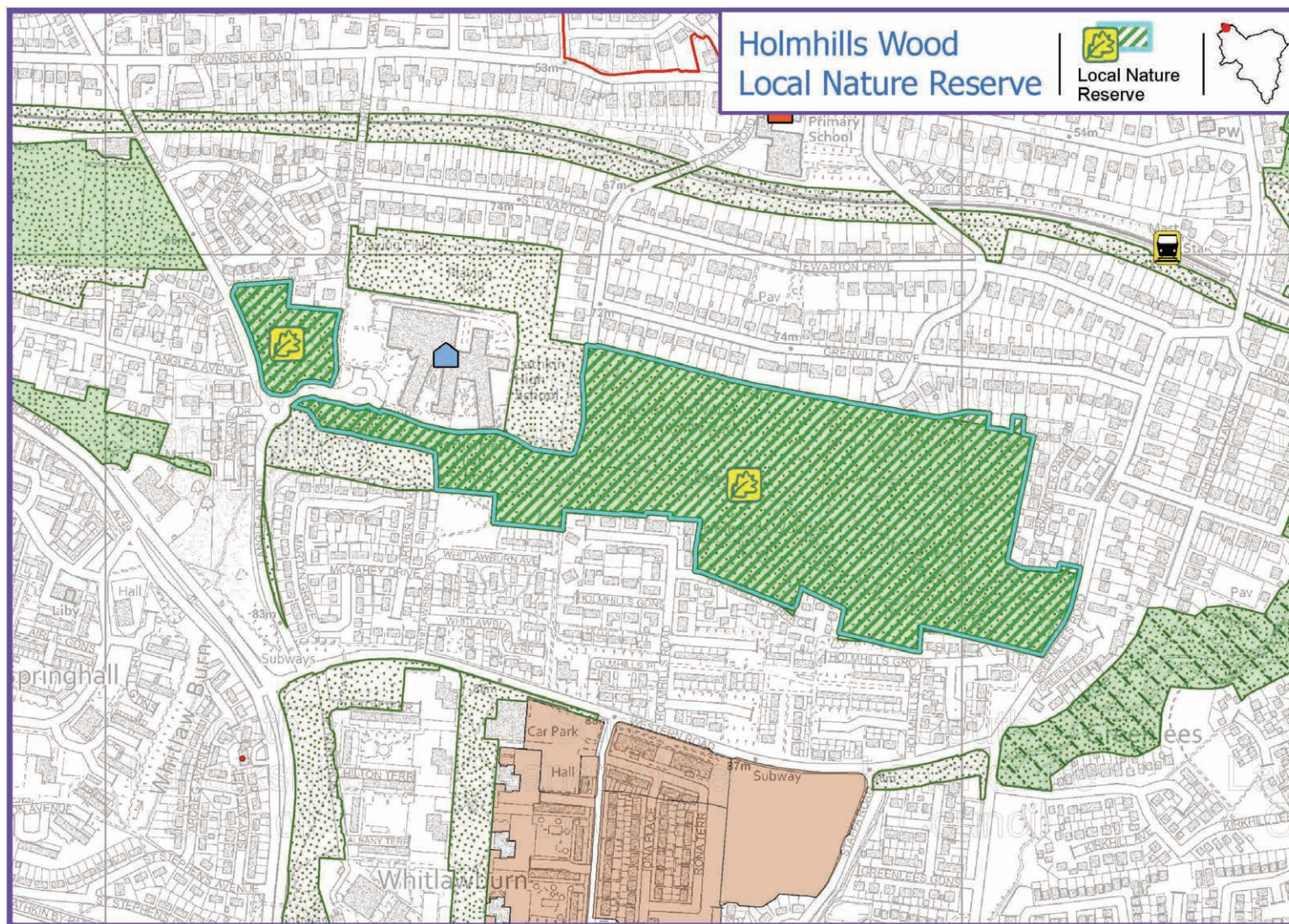


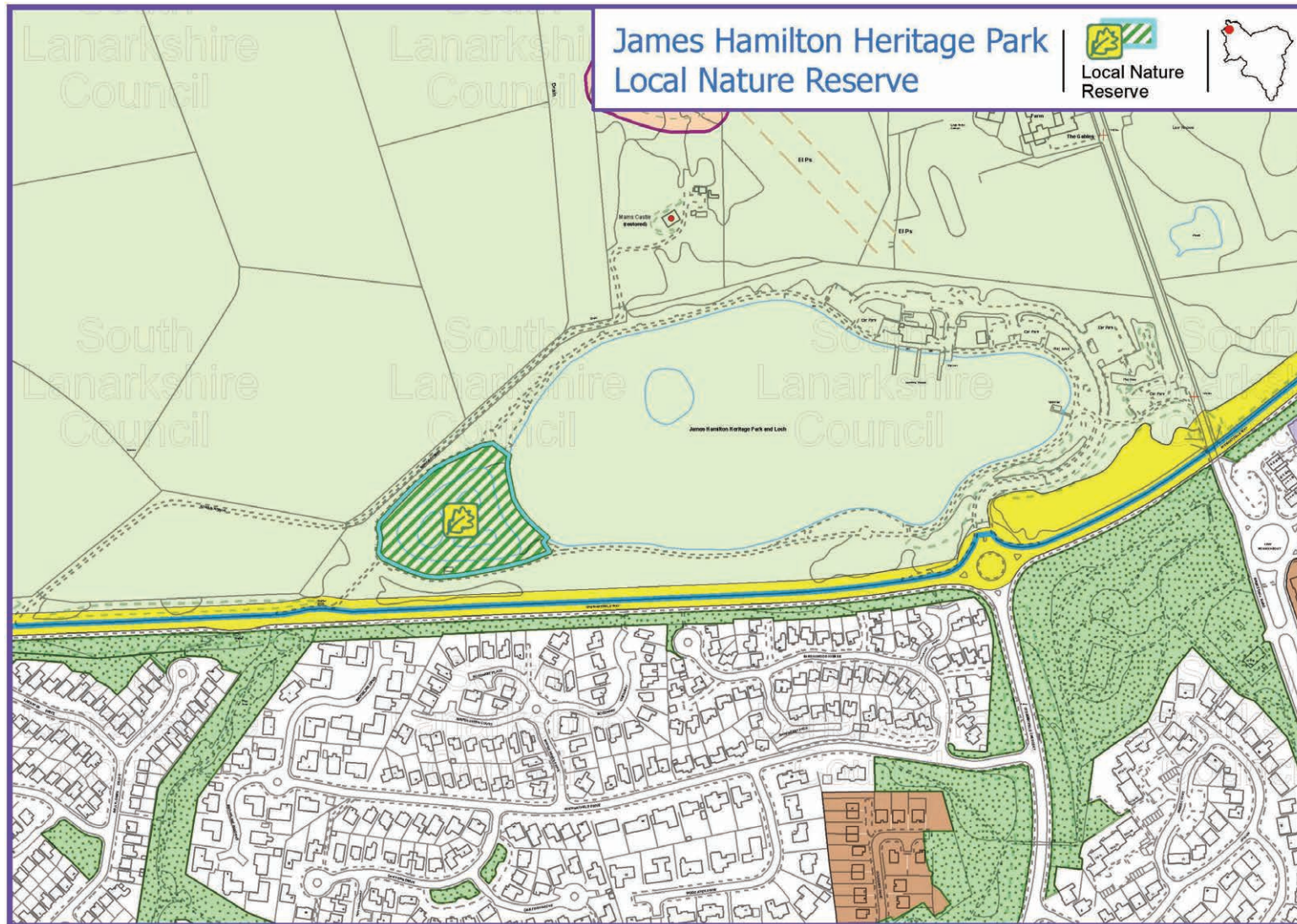
Appendix 1

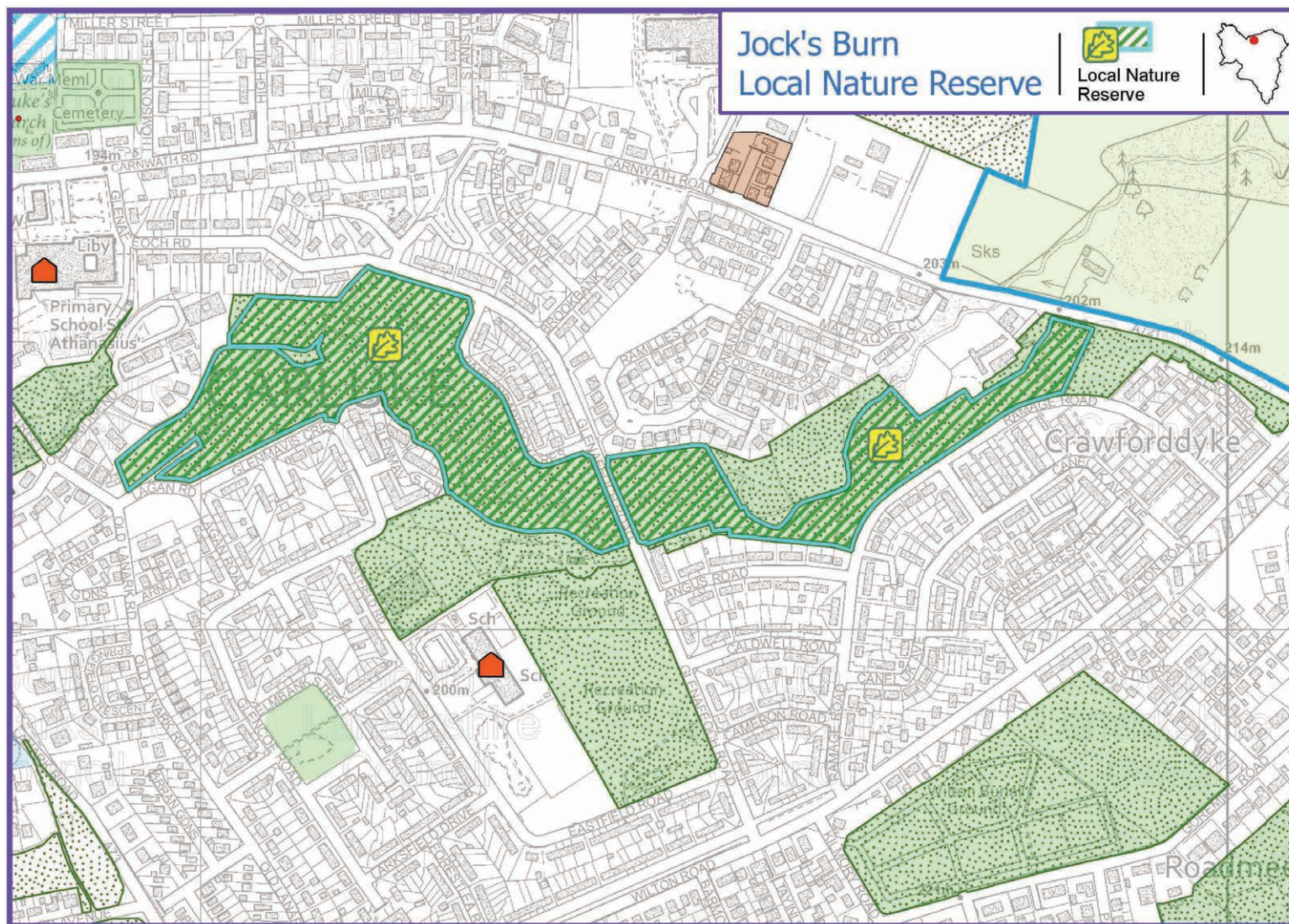




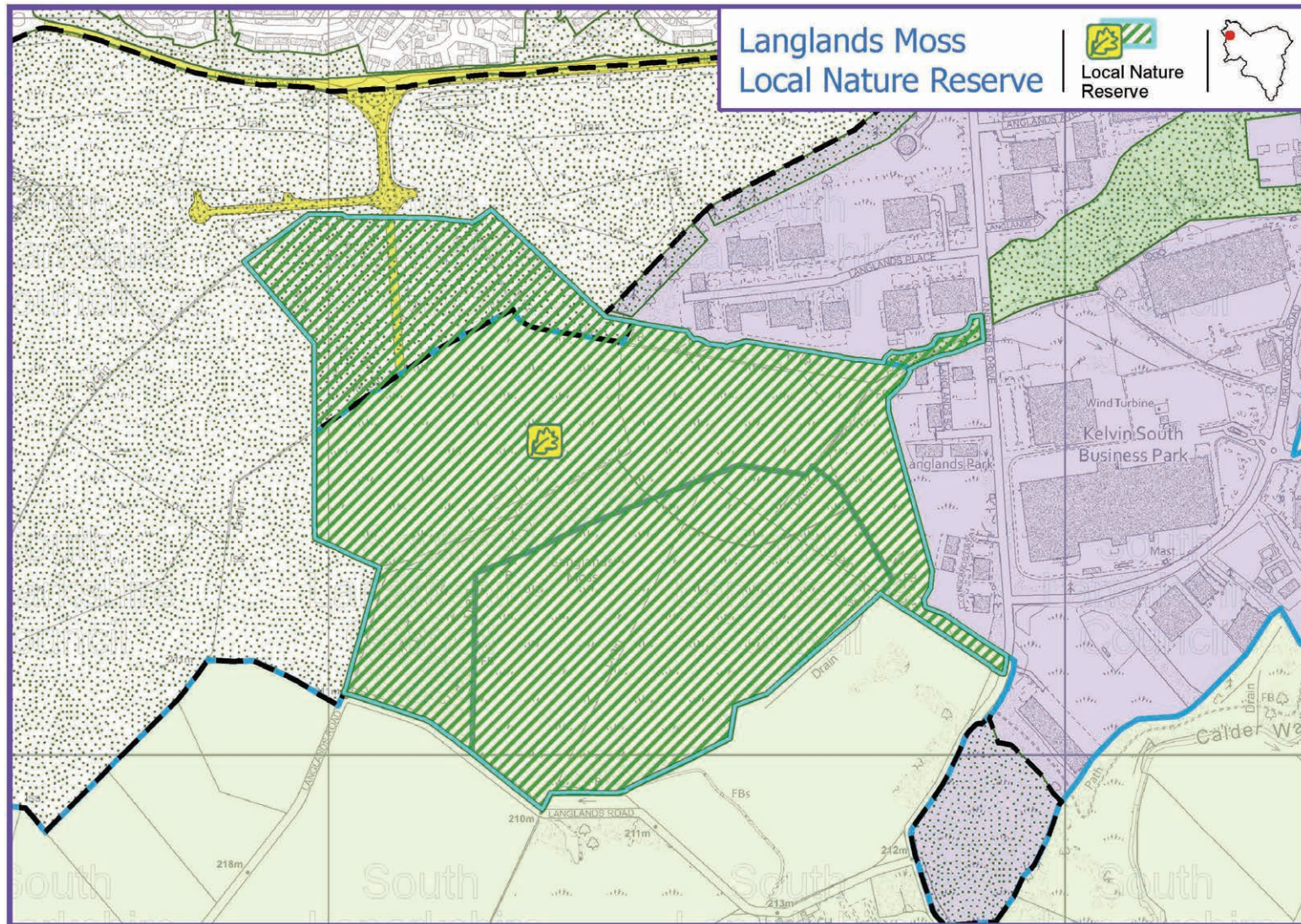
Appendix 1



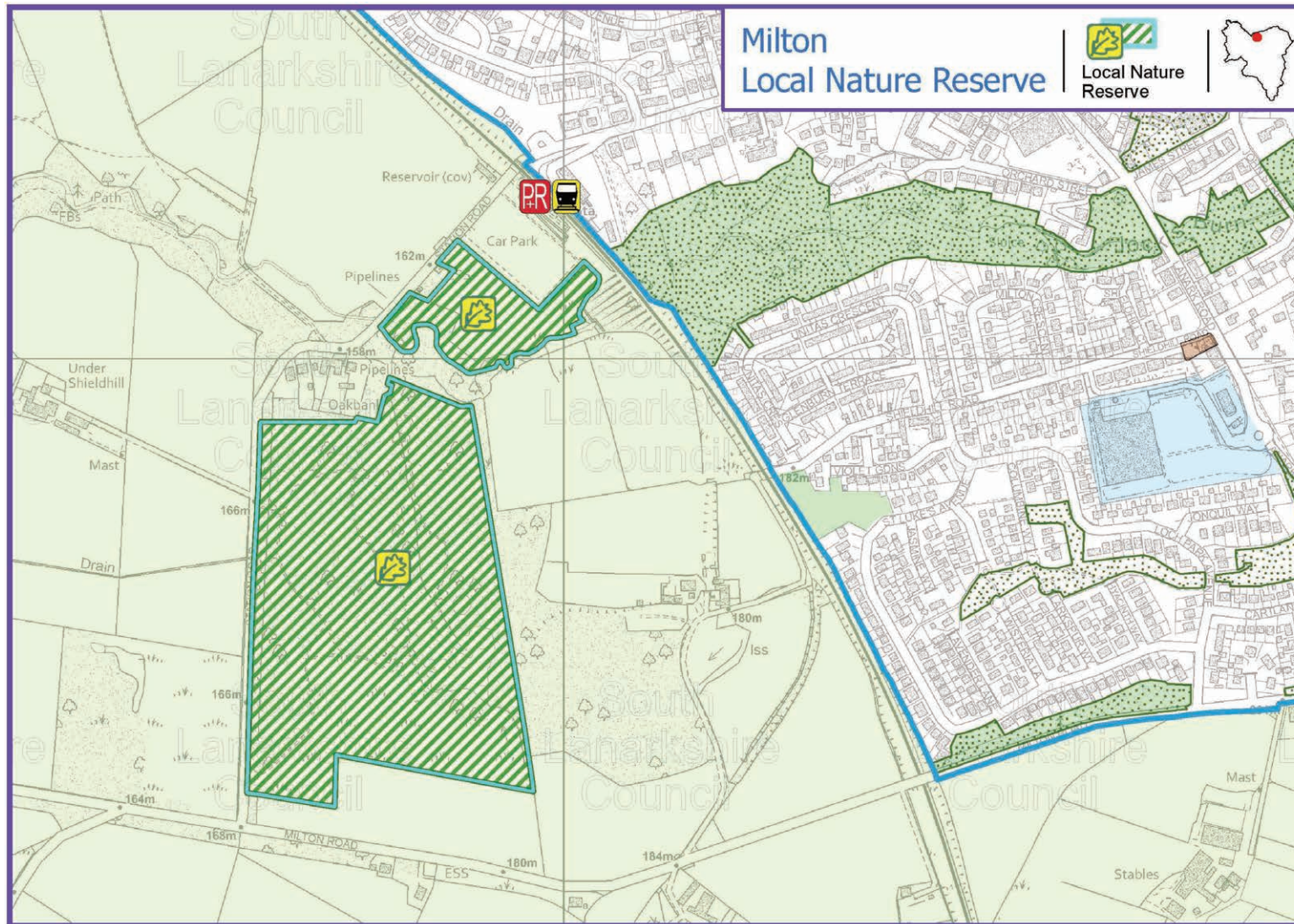


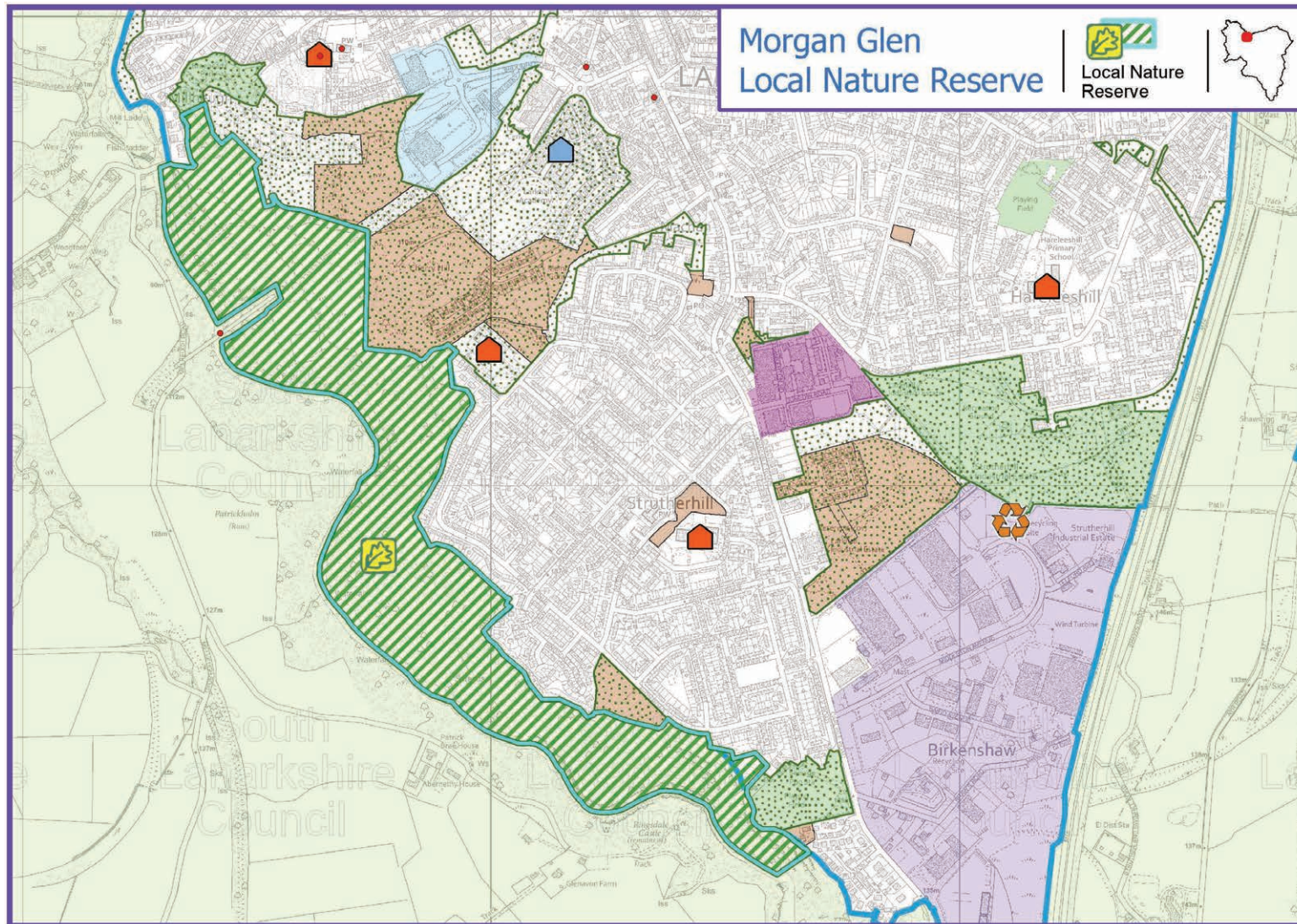


© Crown copyright and database rights 2022. Ordnance Survey 100020730. Contains Historic Environment Scotland and Ordnance Survey data © Historic Environment Scotland - Scottish charity No. sco45925 © Crown Copyright and database right.

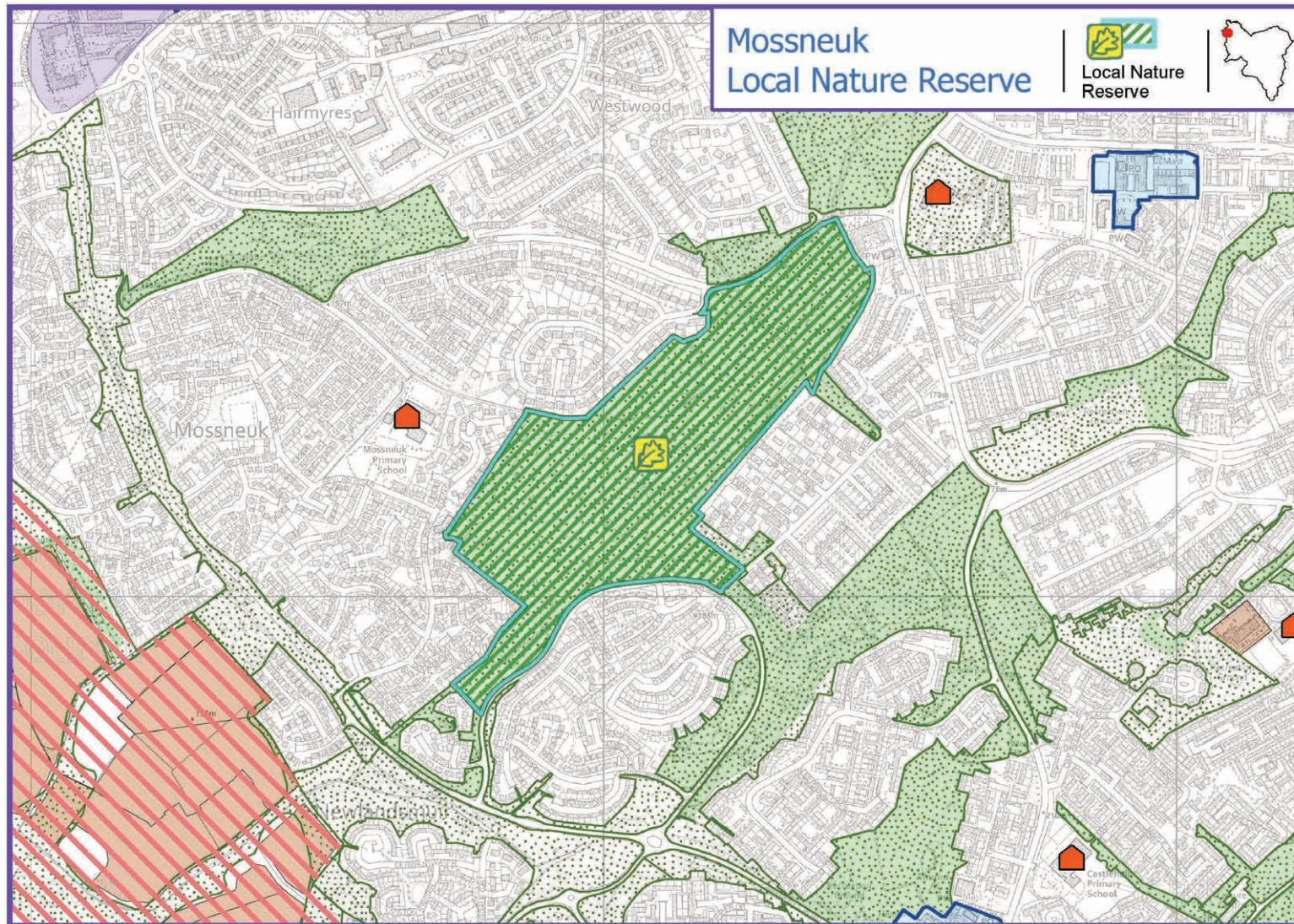


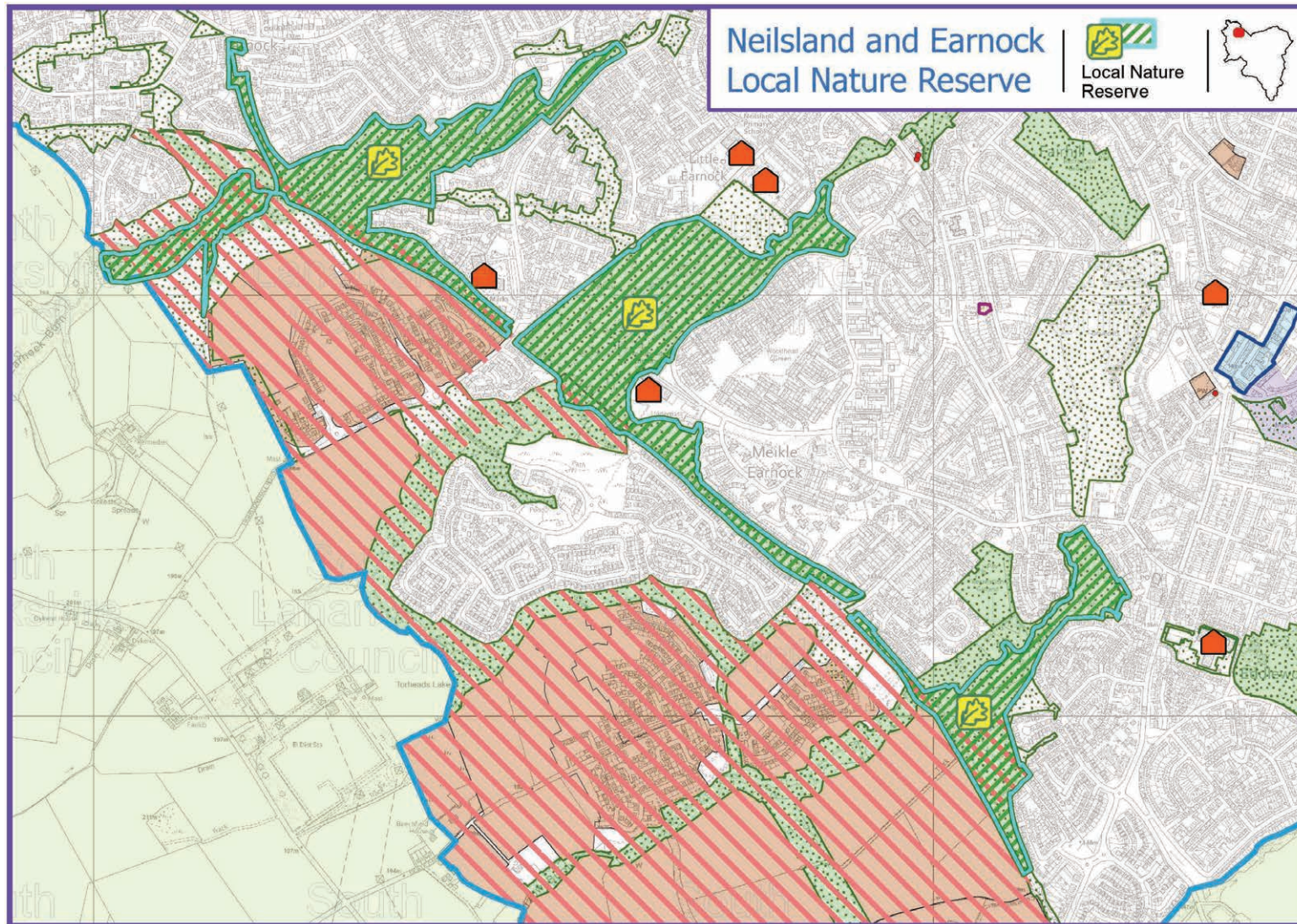
Appendix 1



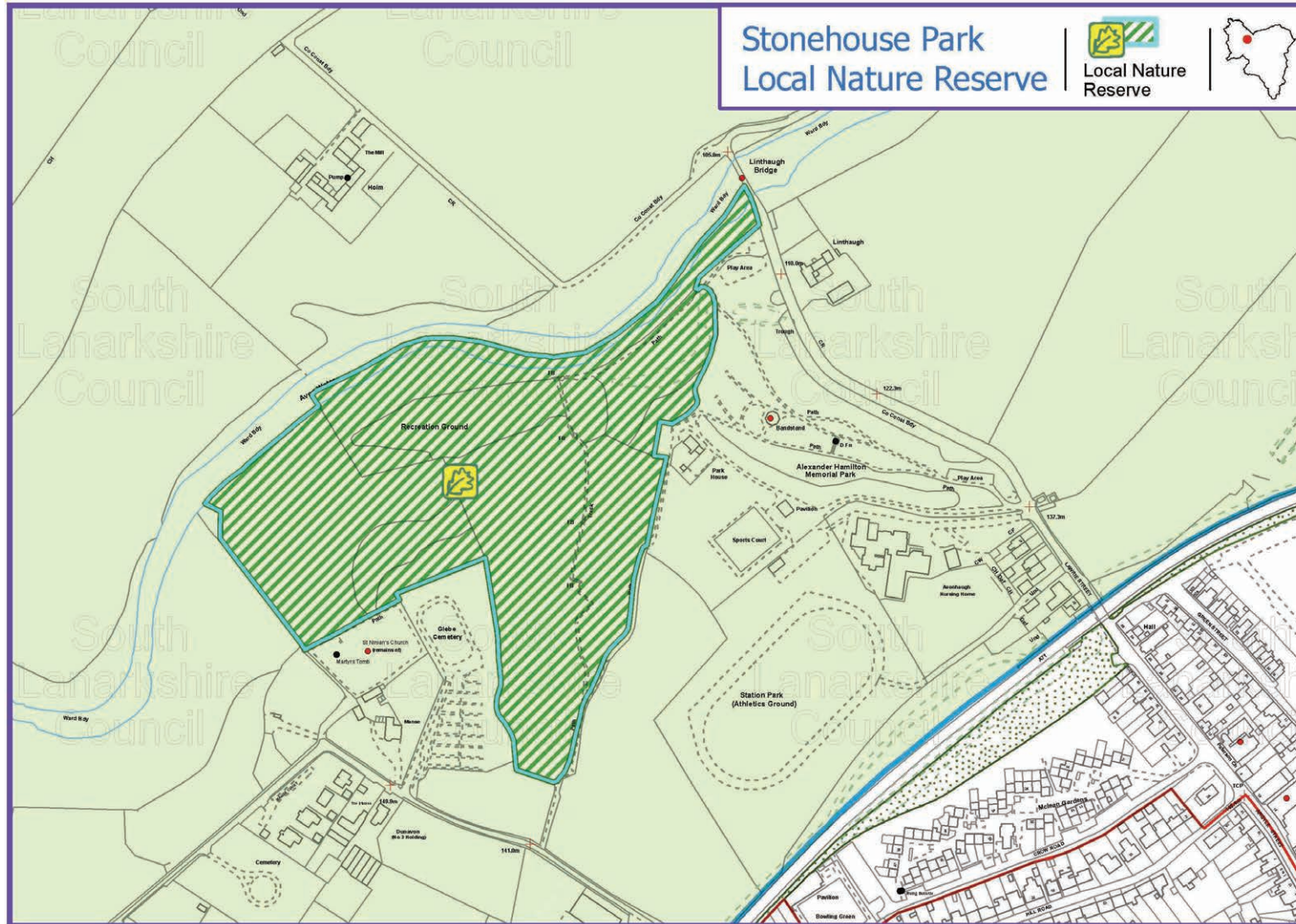


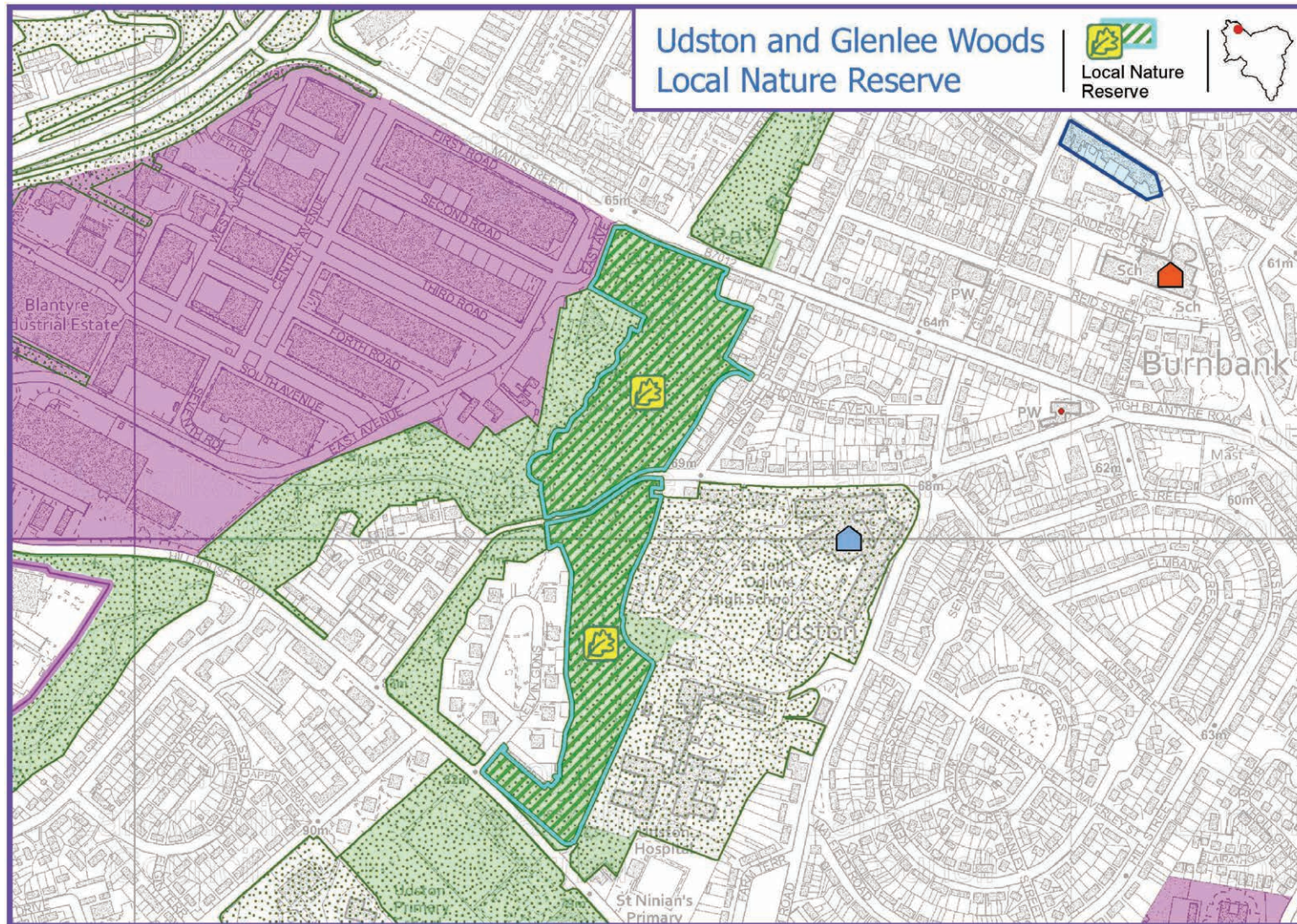
Appendix 1





Appendix 1





Appendix 1

