



## Connect Objective:

Protect vulnerable children, young people and adults

**100%**

of children seen  
by a supervising  
officer within the



**day target**

Welfare guardianship visits  
completed on time:



local authority visits



private visits

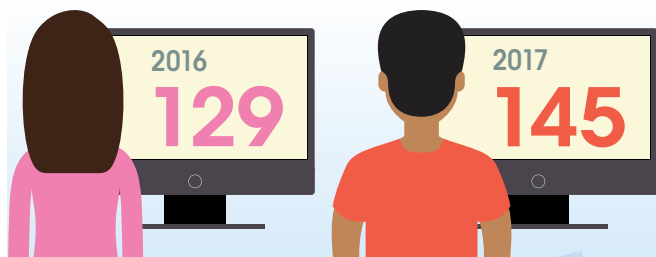
Community mental  
health teams support:

2016-17  
**671**  
people

2017-18  
**686**  
people



Children using Viewpoint system:



Local Autism Action Plan

consulted over



affected people

People with learning difficulties  
supported to live in their own communities:

2016-17:

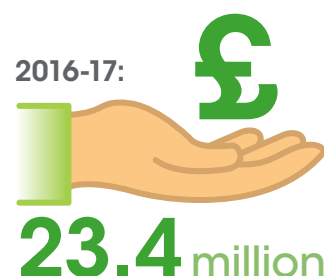


2017-18:



Money Matters Advice Service  
has helped residents claim benefits

2016-17:



2017-18:



Over

**3,000**



vulnerable  
young people

supported through 218 sessions  
to improve skills

[www.southlanarkshire.gov.uk/connect](http://www.southlanarkshire.gov.uk/connect)

If you need this information in another language or format, please contact us to discuss how we can best meet your needs.  
Phone: 0303 123 1015 Email: [equalities@southlanarkshire.gov.uk](mailto:equalities@southlanarkshire.gov.uk)

Produced for Finance and Corporate Resources by Communications and Strategy. 045358/Sep18



## Connect Objective:

Improve the availability, quality and access to housing

### Completed new affordable homes



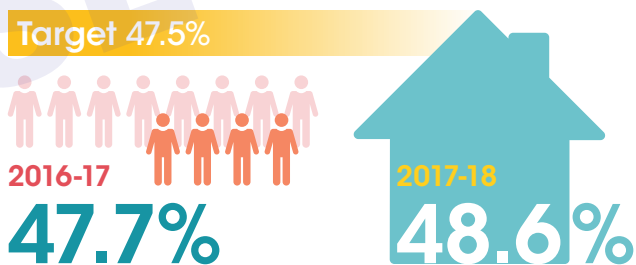
### Average time to let empty homes



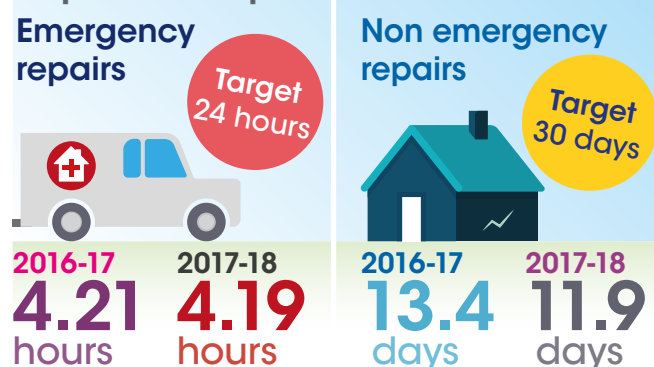
### Housing repairs completed first time



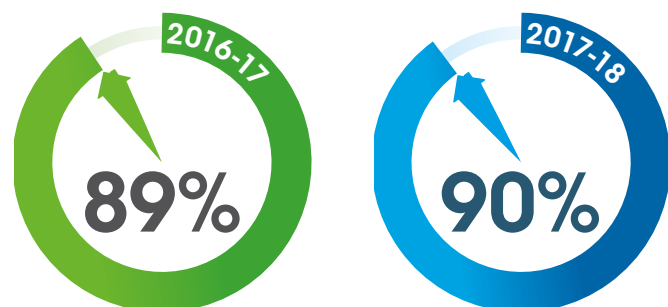
### Lets given to homeless households



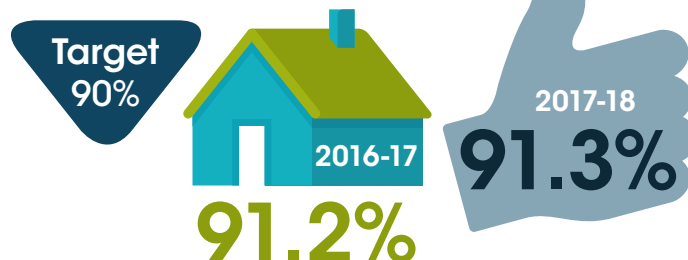
### Repairs completed



### Lets sustained for over a year



### Tenants satisfied with housing repairs service



[www.southlanarkshire.gov.uk/connect](http://www.southlanarkshire.gov.uk/connect)

If you need this information in another language or format, please contact us to discuss how we can best meet your needs.  
Phone: 0303 123 1015 Email: [equalities@southlanarkshire.gov.uk](mailto:equalities@southlanarkshire.gov.uk)

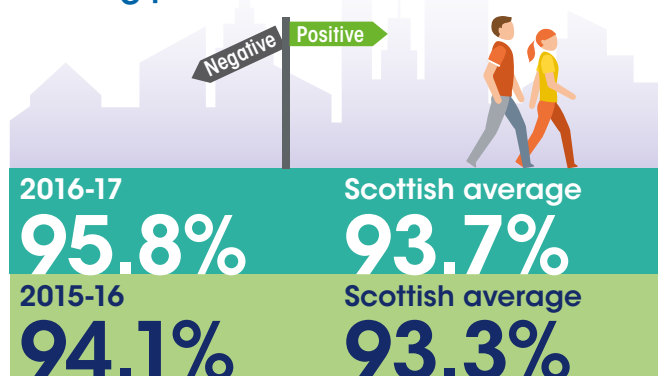
Produced for Finance and Corporate Resources by Communications and Strategy. 045358/Sep18



## Connect Objective:

Improve achievement, raise educational attainment and support lifelong learning

School leavers entering positive destinations:



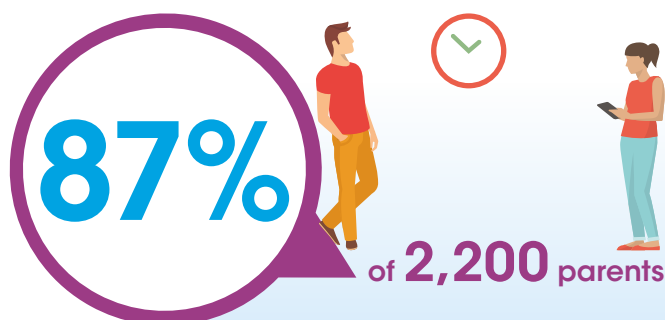
1,200

young people accessed 77 literacy and numeracy programmes



350

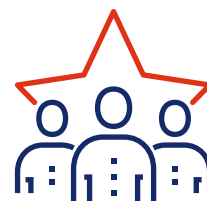
adults engaged in family learning activities and experiences with their children



1,800

young people

participated in awards schemes



The Duke of Edinburgh's Awards Scheme



SQA Steps to Work

Working with others employability units



Youth Chinese Test Awards

HSK level 1 Awards



John Muir Award



Junior Award Scheme for Schools (JASS) Award



ASDAN Youth Achievement Award

ASDAN PSD Award

Level 1 Customer Services Award



Youth Scotland Hi5 Award

## Curriculum for Excellence



Literacy levels increased by 4.9% since 2015-16 and



Numeracy levels increased by 5.3% since 2015-16

## Exam results

88.5%

of learners achieved 5 or more National 4 level qualifications increased by 6.3% since 2013



64.4%

of learners achieved 5 or more National 5 level qualifications increased by 9.5% since 2013



36.2%

of learners achieved 5 or more Higher level qualifications increased by 9.0% since 2013



[www.southlanarkshire.gov.uk/connect](http://www.southlanarkshire.gov.uk/connect)

If you need this information in another language or format, please contact us to discuss how we can best meet your needs.  
Phone: 0303 123 1015 Email: [equalities@southlanarkshire.gov.uk](mailto:equalities@southlanarkshire.gov.uk)

Produced for Finance and Corporate Resources by Communications and Strategy. 045358/Sep18