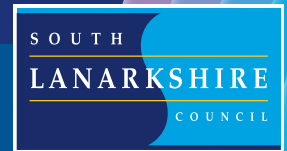




connect outcome

Children and young people



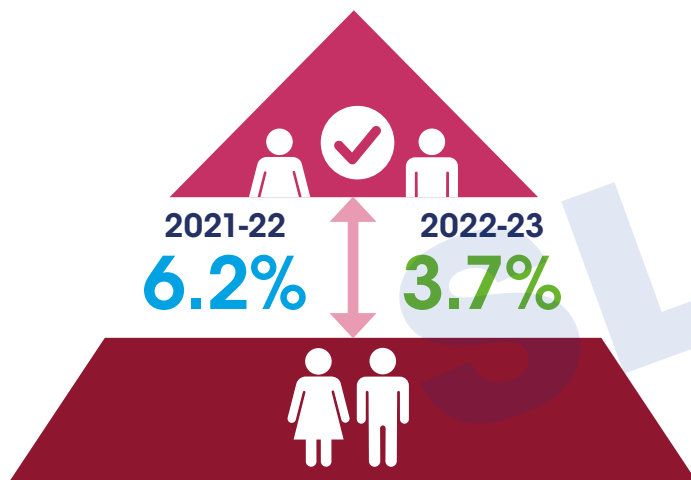
Council Plan
2022
2027

How we did in 2022-23

Note: some 2022-23 results were impacted due to the Covid-19 crisis

Reduce the gap for positive destination outcomes for care experienced young people

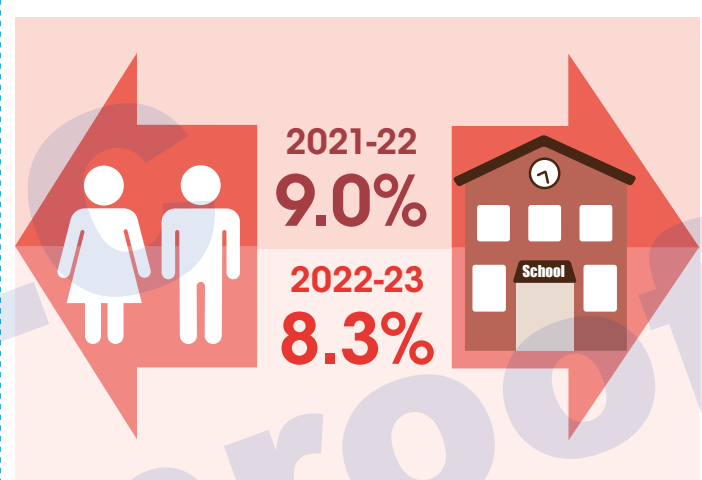
Target – 6.2%



Target met ✓ Performance improving ✓

Gap in attendance between secondary pupils from the least and most deprived areas

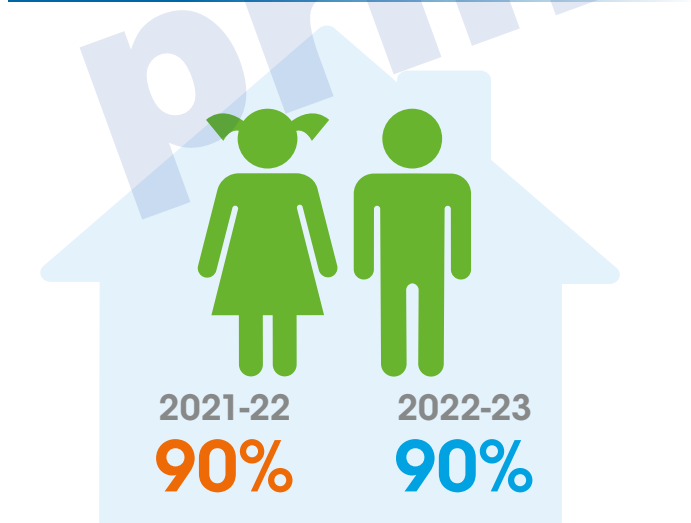
Target – 9.2%



Target met ✓ Performance improving ✓

Children being looked after in a community setting

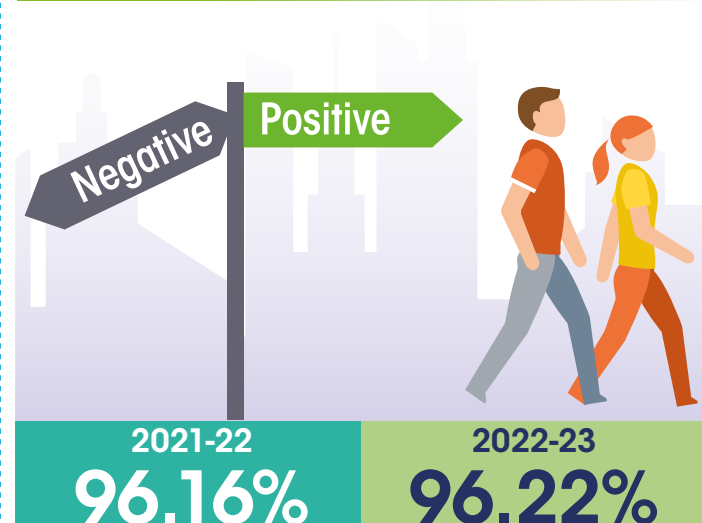
Target – more than 90%



Target met ✓ Performance maintained ↔

Pupils entering positive destinations

Target – 95.7%



Target met ✓ Performance improving ✓

www.southlanarkshire.gov.uk/connect

If you need this information in another language or format, please contact us to discuss how we can best meet your needs.

Phone: 0303 123 1015 Email: equalities@southlanarkshire.gov.uk

Produced for Finance and Corporate Resources by Communications and Strategy. 065260/Jul23



connect outcome Education and learning



Council Plan
2022
2027

How we did in 2022-23

Note: some 2022-23 results were impacted due to the Covid-19 crisis

P1, P4 and P7 pupils attaining the Curriculum for Excellence level for their stage or better in Literacy

Target – 71.1%

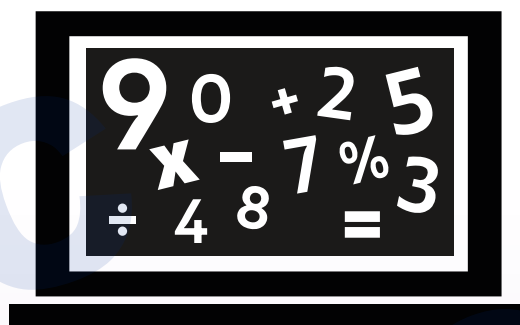


| 2021-22 | 2022-23 |
|---------|---------|
| 70.2% | 71.7% |

Target met ✓ Performance improving ✓

P1, P4 and P7 pupils attaining the Curriculum for Excellence level for their stage or better in Numeracy

Target – 78.3%



| 2021-22 | 2022-23 |
|---------|---------|
| 77.9% | 79.1% |

Target met ✓ Performance improving ✓

School leavers achieving 1 or more awards at Level 5

Target – 87.5%

| 2021-22 |
|---------|
| 91.2% |

| 2022-23 |
|---------|
| 90% |



Target met ✓ Performance improving ✗

School leavers achieving 1 or more awards at Level 6

Target – 67%

| 2021-22 |
|---------|
| 72.3% |

| 2022-23 |
|---------|
| 68.9% |



Target met ✓ Performance improving ✗

www.southlanarkshire.gov.uk/connect

If you need this information in another language or format, please contact us to discuss how we can best meet your needs.

Phone: 0303 123 1015 Email: equalities@southlanarkshire.gov.uk

Produced for Finance and Corporate Resources by Communications and Strategy. 065260/Jul23



connect outcome

Our economy



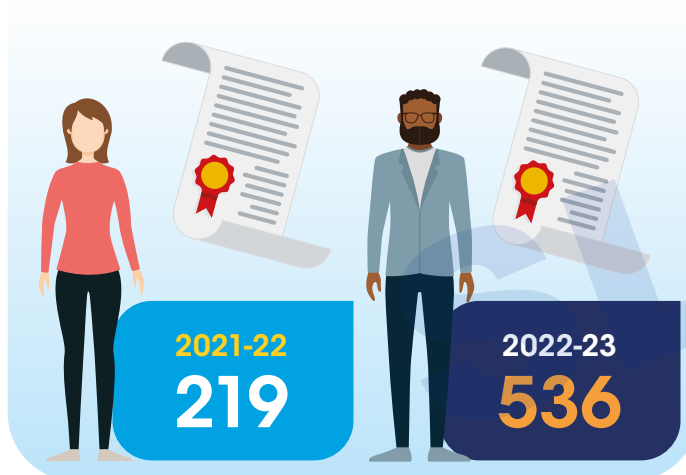
Council Plan
2022
2027

How we did in 2022-23

Note: some 2022-23 results were impacted due to the Covid-19 crisis

Number of unemployed people accessing further education or training

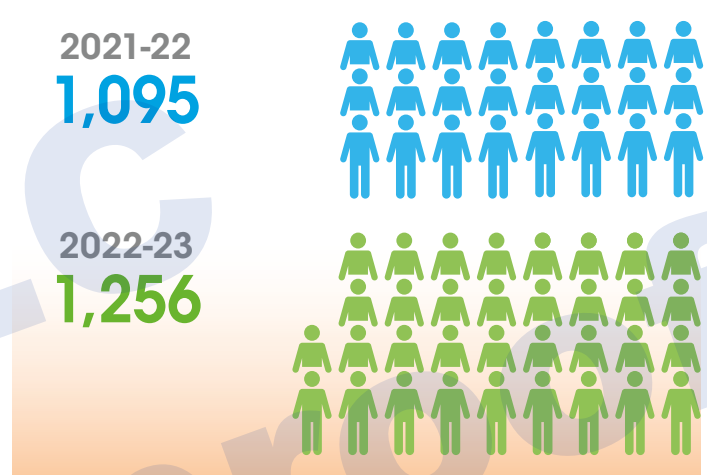
Target – 200



Target met ✓ Performance improving ✓

Number of jobs created or sustained as a direct result of Economic Development intervention

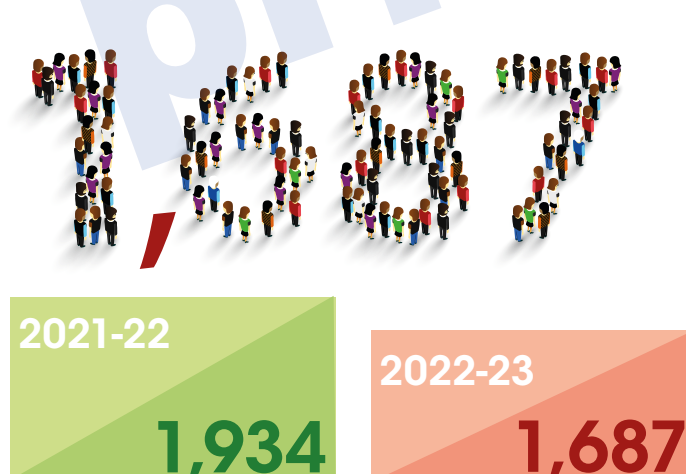
Target – 500



Target met ✓ Performance improving ✓

Unemployed people supported via council operated employability programmes

Target – 1,200



Target met ✓ Performance improving ✗

Business support interventions by Economic Development (grants, loans or advice)

Target – 1,500



Target met ✓ Performance improving ✗

www.southlanarkshire.gov.uk/connect

If you need this information in another language or format, please contact us to discuss how we can best meet your needs.

Phone: 0303 123 1015 Email: equalities@southlanarkshire.gov.uk

Produced for Finance and Corporate Resources by Communications and Strategy. 065260/Jul23



connect outcome Communities and environment



Council Plan
2022
2027

How we did in 2022-23

Note: some 2022-23 results were impacted due to the Covid-19 crisis

Percentage of household waste sent to landfill

Target – 10%

2021-22
8.7%

2022-23
1.8%



Target met ✓ Performance improving ✓

Percentage of total household waste that is recycled

Target – 50%

2021-22
41%

2022-23
41%



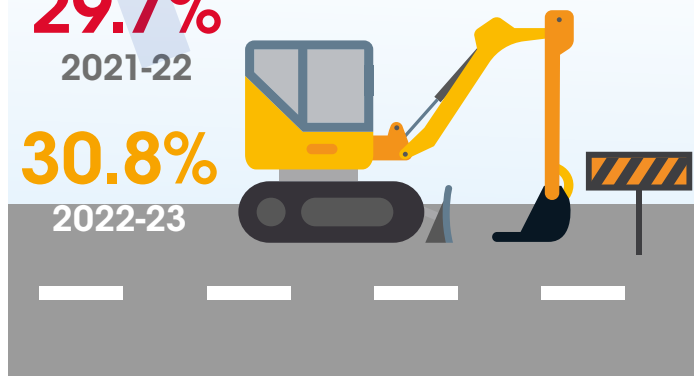
Target met ✗ Performance maintained ↔

Percentage of our road network that should be considered for maintenance treatment (Road Condition Index)

Target – 29.7%

29.7%
2021-22

30.8%
2022-23



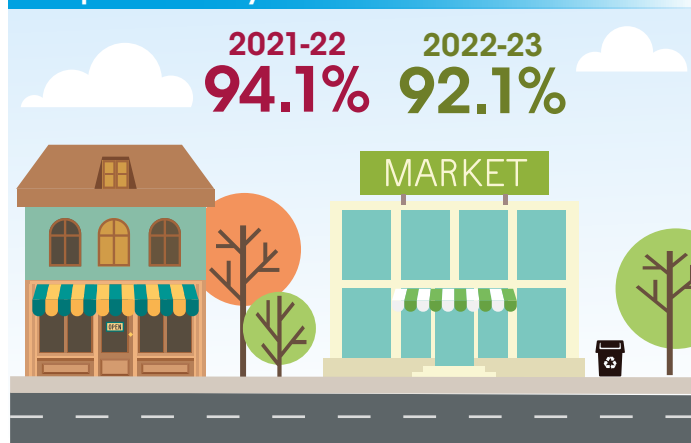
Target met ✗ Performance improving ✗

Percentage of streets found to be acceptable during Litter Monitoring System (LMS) Surveys

Target – improvement on previous year

2021-22
94.1%

2022-23
92.1%



Target met ✗ Performance improving ✗

www.southlanarkshire.gov.uk/connect

If you need this information in another language or format, please contact us to discuss how we can best meet your needs.

Phone: 0303 123 1015 Email: equalities@southlanarkshire.gov.uk

Produced for Finance and Corporate Resources by Communications and Strategy. 065260/Jul23



connect outcome

Health and Wellbeing



Council Plan
2022
2027

How we did in 2022-23

Note: some 2022-23 results were impacted due to the Covid-19 crisis

Average days to complete adaptations in council homes

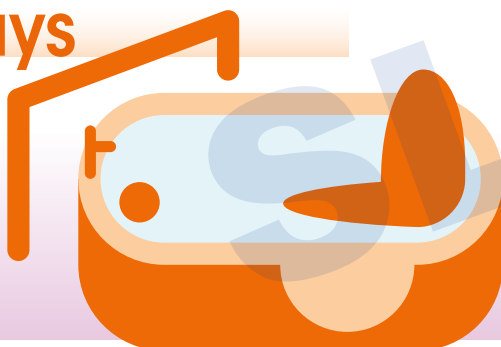
Target – 28 days

2021-22

23 days

2022-23

22 days



Target met ✓ Performance improving ✓

Local authority and private Welfare guardianship visits:

Target – 90%

% Completed on time

2021-22

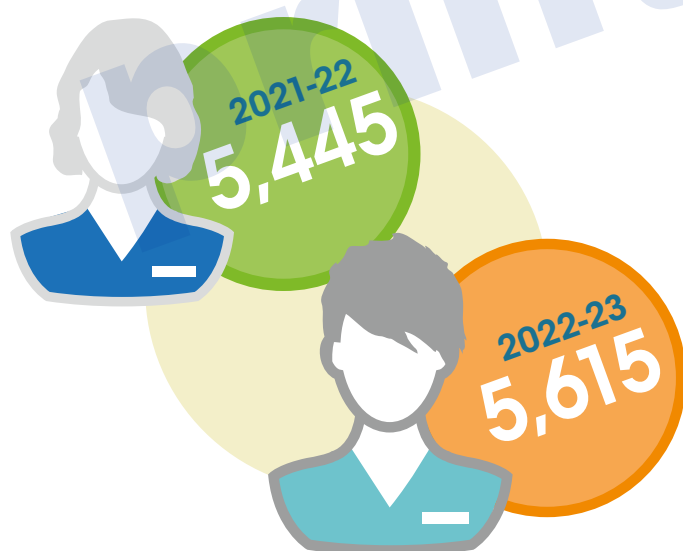
2022-23



Target met ✓ Performance improving ✗

Carers accessing support

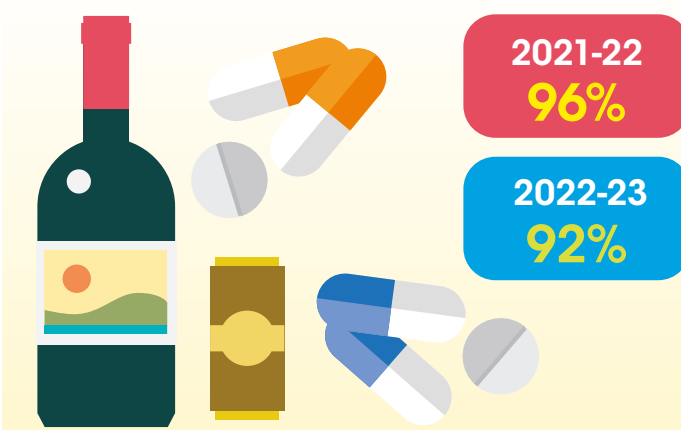
Target – increase by 10%



Target met ✓ Performance improving ✓

Percentage of drug/alcohol clients starting treatment/psychological intervention within three weeks of referral

Target – 90%



Target met ✓ Performance improving ✗

www.southlanarkshire.gov.uk/connect

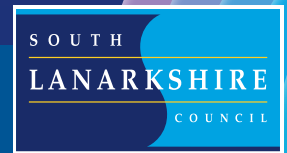
If you need this information in another language or format, please contact us to discuss how we can best meet your needs.

Phone: 0303 123 1015 Email: equalities@southlanarkshire.gov.uk

Produced for Finance and Corporate Resources by Communications and Strategy. 065260/Jul23



connect outcome Housing and land



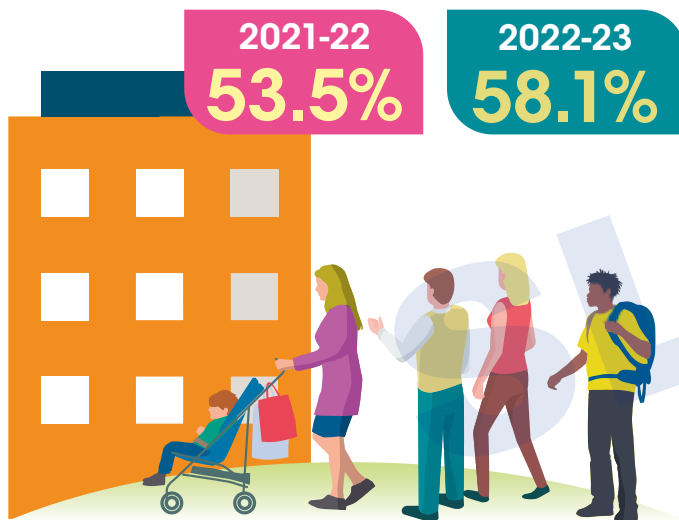
Council Plan
2022
2027

How we did in 2022-23

Note: some 2022-23 results were impacted due to the Covid-19 crisis

Percentage of lets to urgent housing (UH) need households

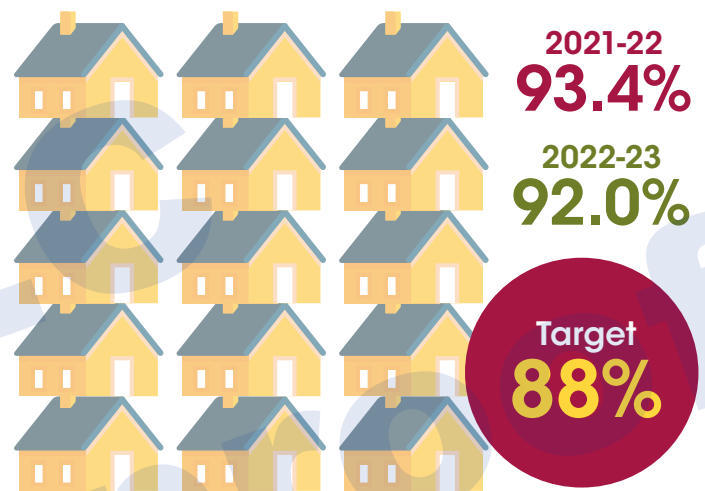
Target – 55%



Target met ✓ Performance improving ✓

Percentage of new tenancies sustained for more than a year for all lets

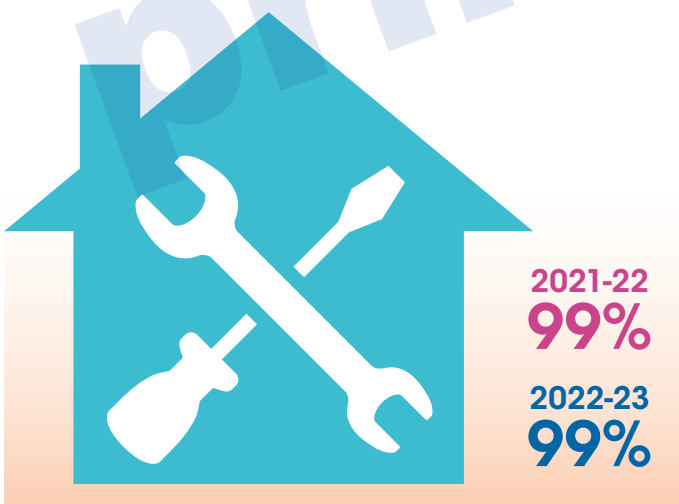
Target – 88%



Target met ✓ Performance improving ✗

Housing repairs completed right first time

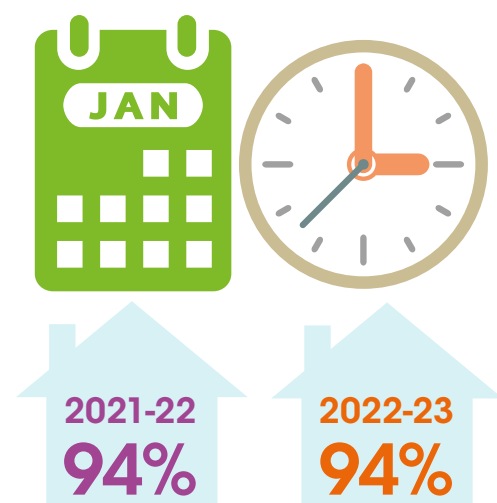
Target – 90%



Target met ✓ Performance maintained ↔

Percentage of repairs appointments kept

Target – 90%



Target met ✓ Performance maintained ↔

www.southlanarkshire.gov.uk/connect

If you need this information in another language or format, please contact us to discuss how we can best meet your needs.

Phone: 0303 123 1015 Email: equalities@southlanarkshire.gov.uk

Produced for Finance and Corporate Resources by Communications and Strategy. 065260/Jul23